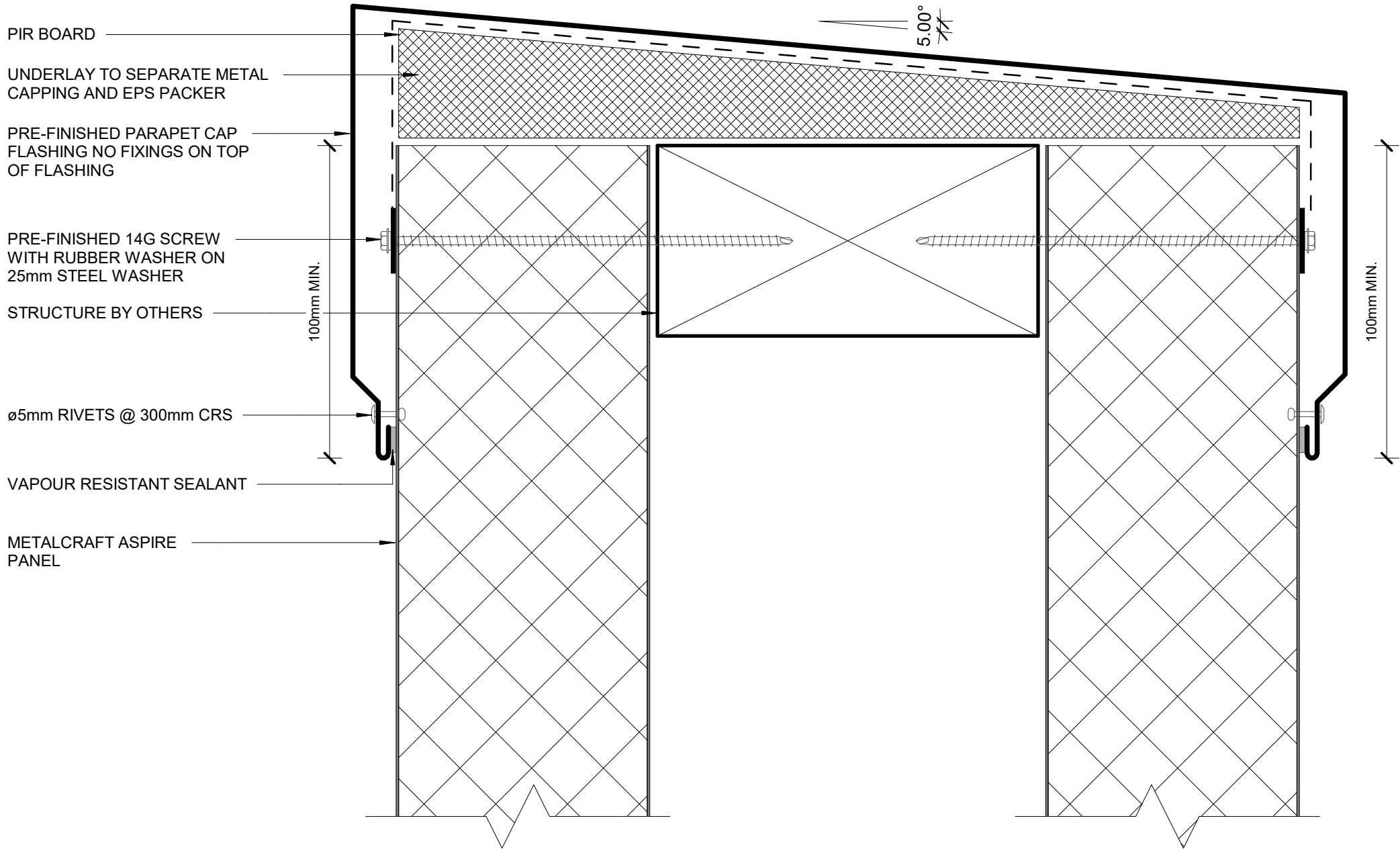


# Aspire panel

## EXTERNAL WALL DETAILS

<u>DETAIL LIST</u>	<u>Revision</u>	<u>Date</u>
00 / 20	COVER SHEET	
01 / 20	PARAPET	1.0 22.06.2023
02 / 20	WINDOW HEAD	1.0 22.06.2023
03 / 20	WINDOW SILL AND JAMB	1.0 22.06.2023
04 / 20	VERTICAL JOINT TYPE C	1.0 22.06.2023
05 / 20	PIPE PENETRATION w DEKTITE FLASHING	1.0 22.06.2023
06 / 20	PIPE PENETRATION w PVC FLANGE	1.0 22.06.2023
07 / 20	MIDFLOOR JOINT	1.0 22.06.2023
08 / 20	SECRET FIXING JOINT 01	1.0 22.06.2023
09 / 20	SECRET FIXING JOINT 02	1.0 22.06.2023
10 / 20	METERBOX JAMB HEAD AND SILL DETAIL	1.0 22.06.2023
11 / 20	INTERNAL/EXTERNAL CORNER DETAIL	1.0 22.06.2023
12 / 20	ALTERNATIVE INTERNAL CORNER	1.0 22.06.2023
13 / 20	ALTERNATIVE EXTERNAL CORNER	1.0 22.06.2023
14 / 20	ABUTMENT 01	1.0 22.06.2023
15 / 20	ABUTMENT 02	1.0 22.06.2023
16 / 20	BOTTOM OF CLADDING 01	1.0 22.06.2023
17 / 20	BOTTOM OF CLADDING 02	1.0 22.06.2023
18 / 20	BOTTOM OF CLADDING 03	1.0 22.06.2023
19 / 20	BOTTOM OF CLADDING 04	1.0 22.06.2023
20 / 20	PANEL PROFILE AND SIZE	1.1 22.06.2023



METALCRAFT ASPIRE  
PANEL

Ø5mm RIVETS @ 300mm CRS

AIRSEAL ON BACKING ROD TO RUN  
CONTINUOUSLY AROUND HEAD, SILL  
AND JAMB

TEMPORARY PACKER IF REQUIRED,  
REMOVED AFTER FIXING

WINDOW HEAD LINER

LINE OF WINDOW JAMB  
LINER BEHIND

PRE-FINISHED WINDOW HEAD  
FLASHING WITH 15° FALL

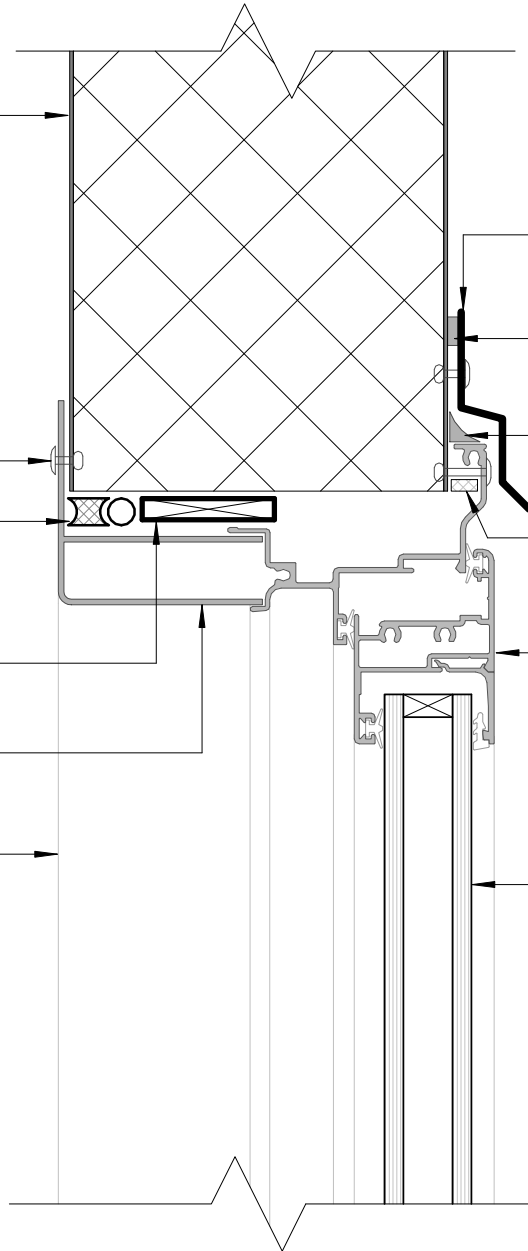
SILICON SEALANT

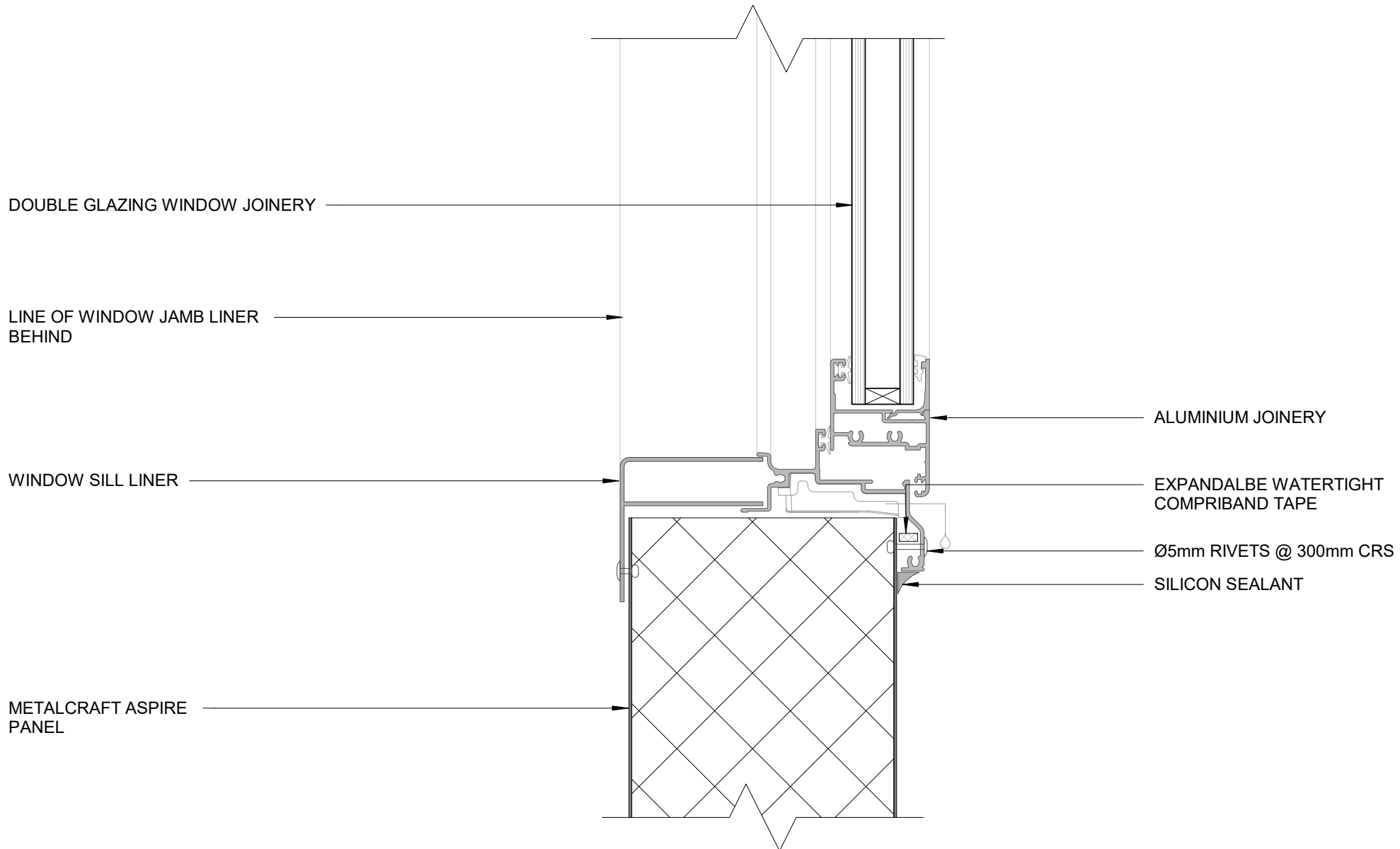
SILICON SEALANT

EXPANDALBE WATERTIGHT  
COMPRIBAND TAPE

ALUMINIUM JOINERY

DOUBLE GLAZING WINDOW JOINERY





DOUBLE GLAZING WINDOW JOINERY

LINE OF WINDOW JAMB LINER  
BEHIND

WINDOW SILL LINER

METALCRAFT ASPIRE  
PANEL

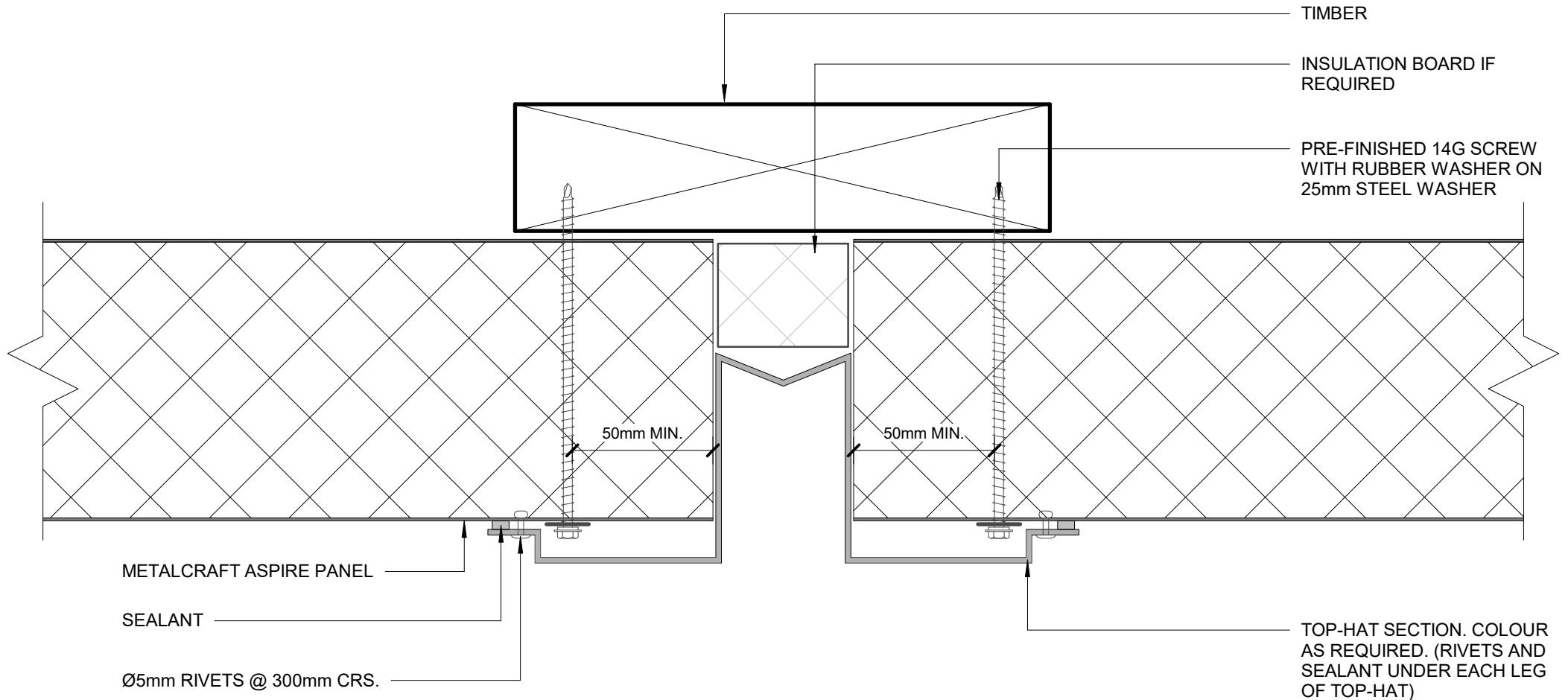
ALUMINIUM JOINERY

EXPANDALBE WATERTIGHT  
COMPRIBAND TAPE

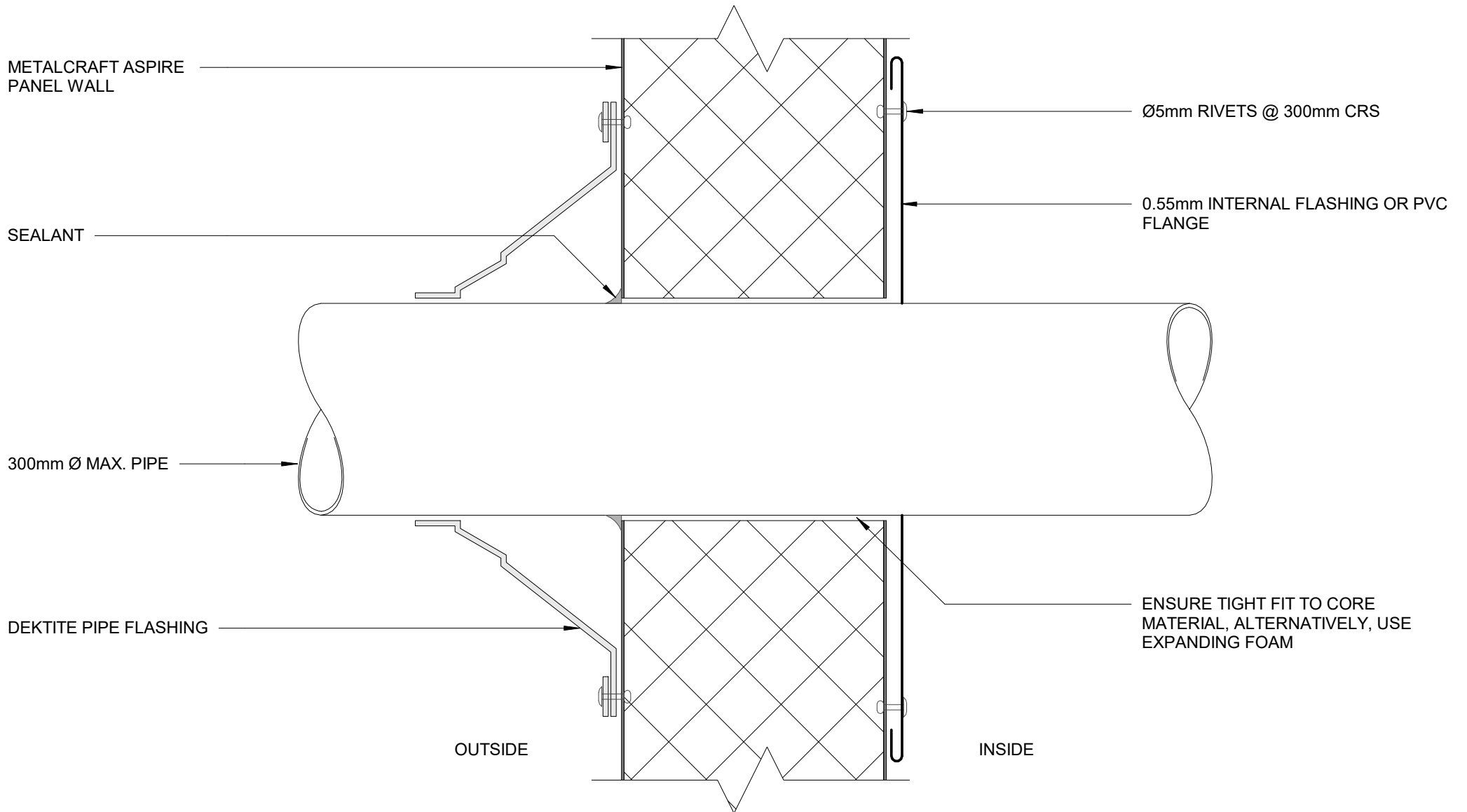
Ø5mm RIVETS @ 300mm CRS

SILICON SEALANT

WINDOW SILL AND JAMB  
EXTERNAL WALL DETAILS



**VERTICAL JOINT TYPE C**  
**EXTERNAL WALL DETAILS**



METALCRAFT ASPIRE  
PANEL

0.55mm INTERNAL FLASHING OR PVC  
FLANGE

SEALANT

Ø5mm RIVETS @ 300mm CRS

0.55mm INTERNAL FLASHING OR PVC  
FLANGE

300mm Ø MAX. PIPE

SEALANT

ENSURE TIGHT FIT TO CORE  
MATERIAL, ALTERNATIVELY, USE  
EXPANDING FOAM

SEALANT

OUTSIDE

INSIDE

### PIPE PENETRATION w PVC FLANGE

Aspire panel

Rev. 1.0

EXTERNAL WALL DETAILS

Reference ASPWD

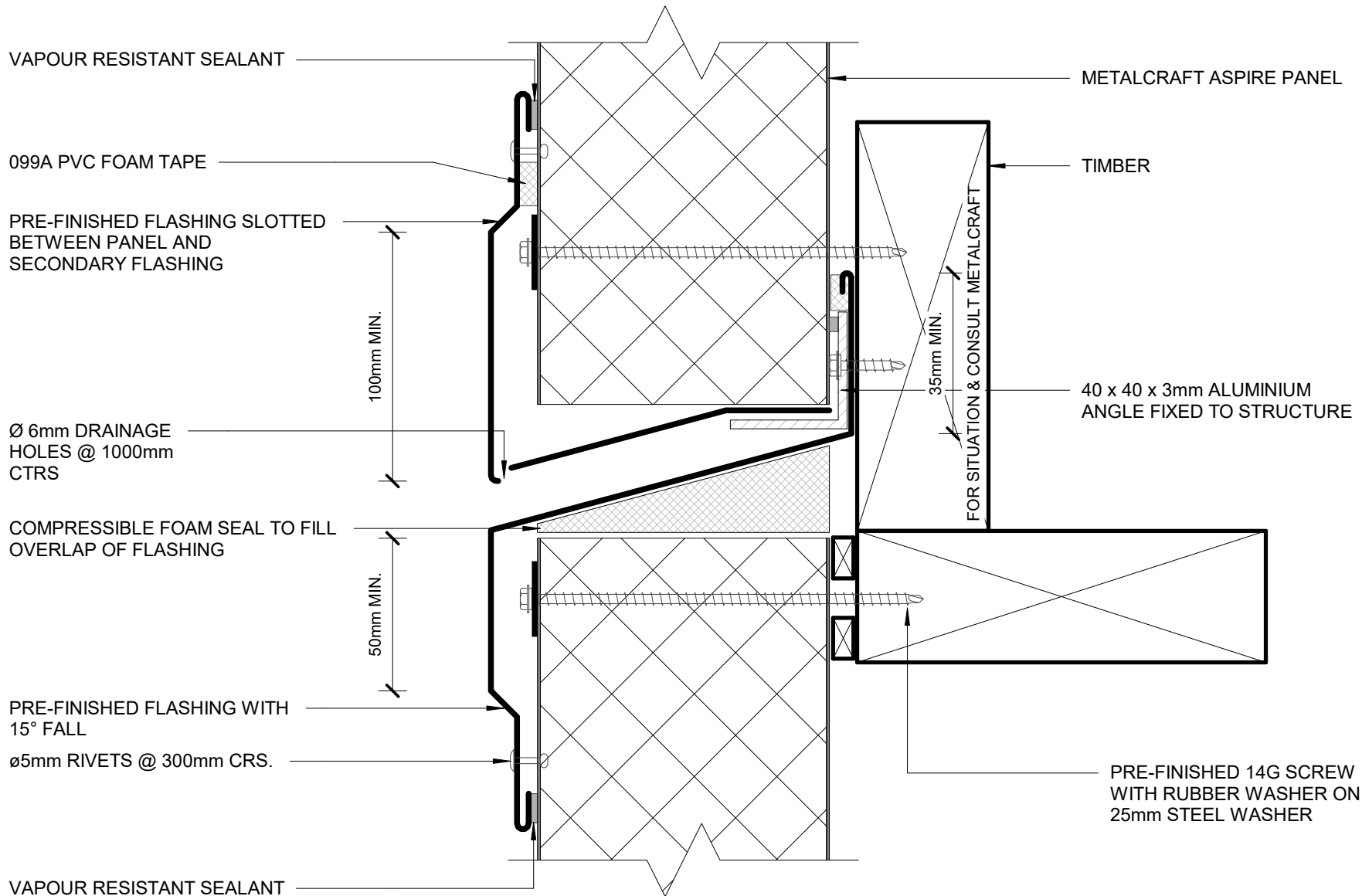
Date 22.06.2023

Scale 1 : 2

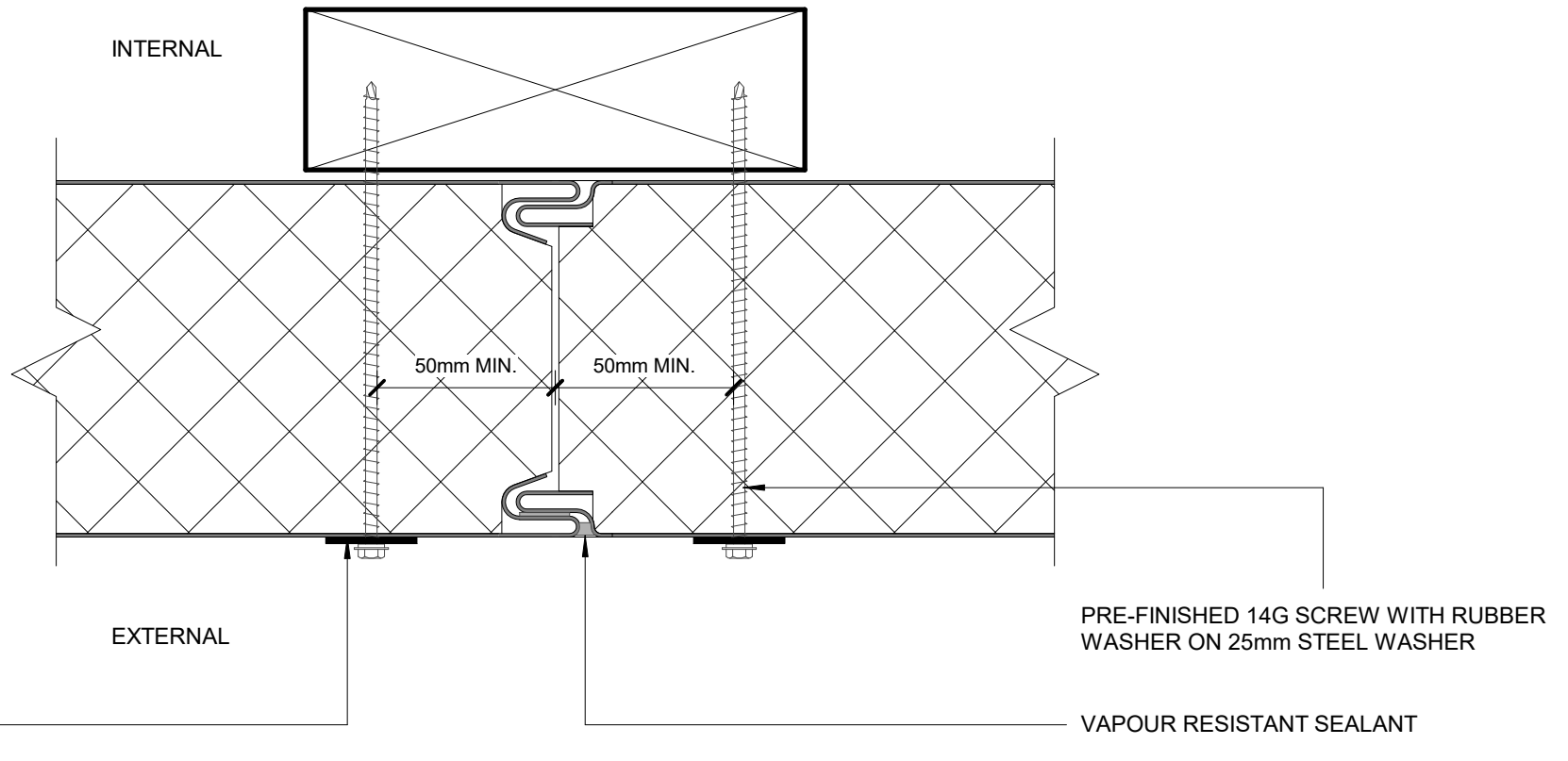
Sheet

06 / 20

DISCLAIMER:  
All details are to be used for indicative purposes only and the designer should consult both the MRM code of practice version 3.0/(2022 - current at time of drawing revision), E2 and all other relevant building codes.  
Details of the supporting mechanisms are indicative only. Compliance of the supporting mechanisms is the responsibility of the designer







METALCRAFT ASPIRE  
PANEL

PRE-FINISHED 14G SCREW WITH RUBBER  
WASHER ON 25mm STEEL WASHER

VAPOUR RESISTANT SEALANT

PRE-FINISHED SELF DRILLING/TAPPING  
SCREW WITH RUBBER WASHER

TIMBER

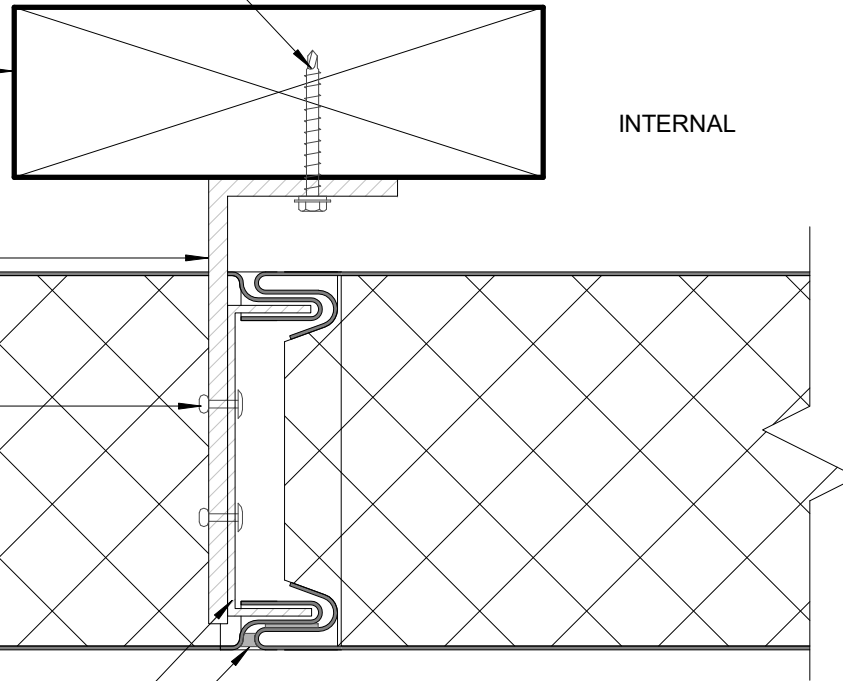
5mm  
ALUMINIUM  
ANGLE CLEAT

ø5mm RIVETS

METALCRAFT ASPIRE  
PANEL

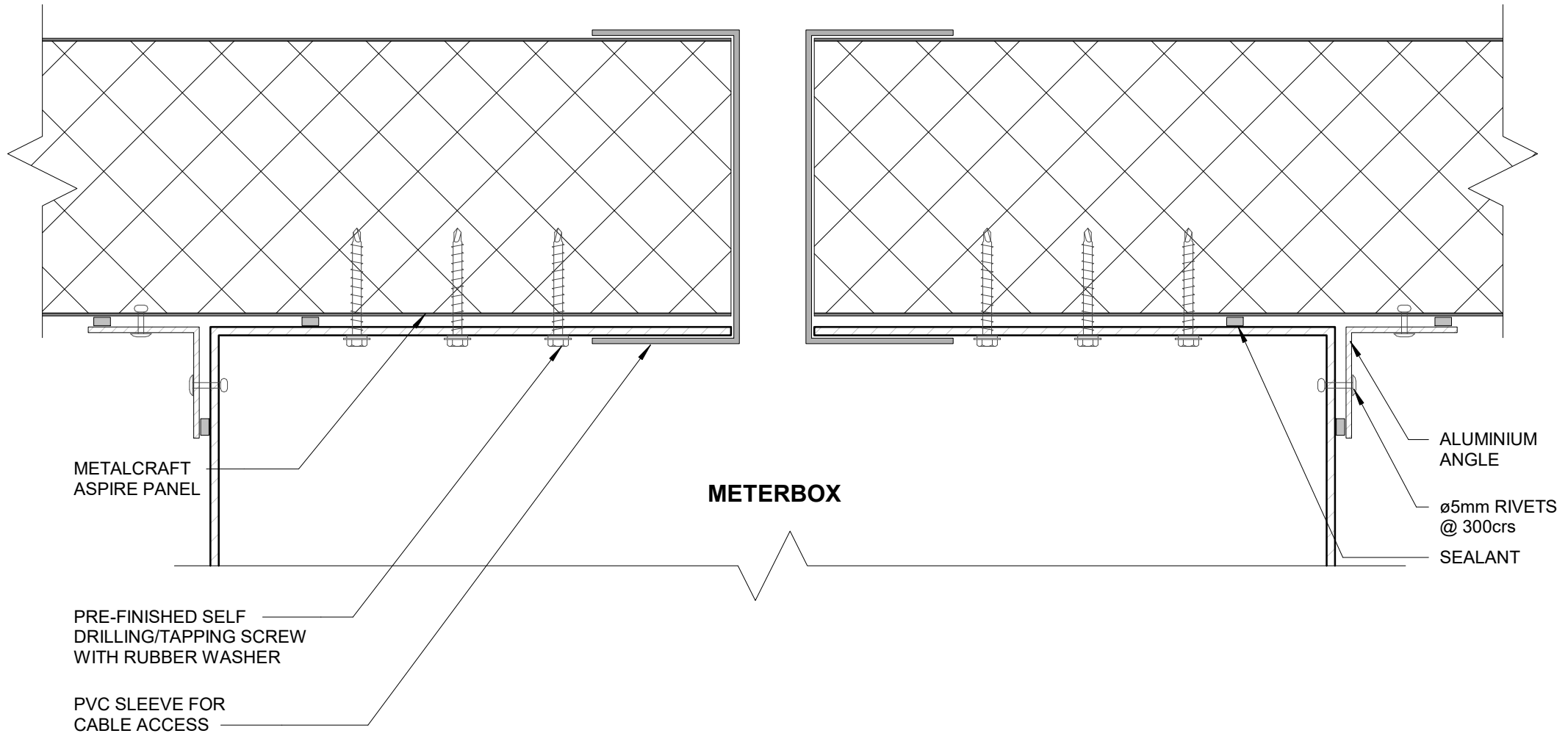
ALUMINIUM BASE  
CAP 300mm LONG  
MIN

VAPOUR RESISTANT  
SEALANT



INTERNAL

EXTERNAL

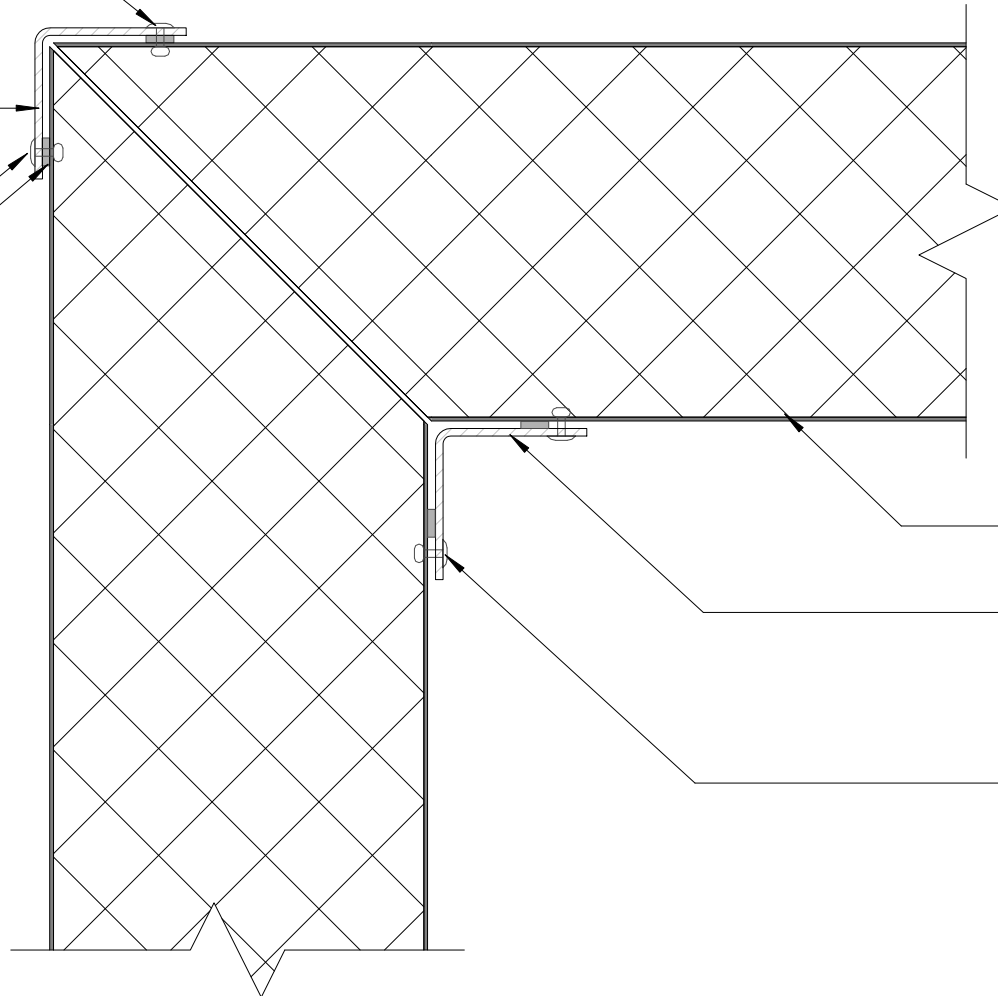


Ø5mm RIVETS @ 300mm CRS

40mm x 40mm 2-3mm MIN.  
FOLDED ALUMINIUM  
EXTERNAL ANGLE

Ø5mm RIVETS @ 300mm CRS.  
WITH SEALANT

SEALANT



METALCRAFT ASPIRE PANEL

40mm x 40mm 2-3mm MIN.  
FOLDED ALUMINIUM  
INTERNAL ANGLE

Ø5mm RIVETS @ 300mm CRS.

**NOTE:**  
ALUMINIUM ANGLES CAN BE  
REPLACED WITH STEEL

**DISCLAIMER:**  
All details are to be used for indicative purposes only and the designer should consult both the MRM code of practice version 3.0/(2022 - current at time of drawing revision), E2 and all other relevant building codes.  
Details of the supporting mechanisms are indicative only. Compliance of the supporting mechanisms is the responsibility of the designer

## INTERNAL/EXTERNAL CORNER DETAIL

Aspire panel

Rev. 1.0

EXTERNAL WALL DETAILS

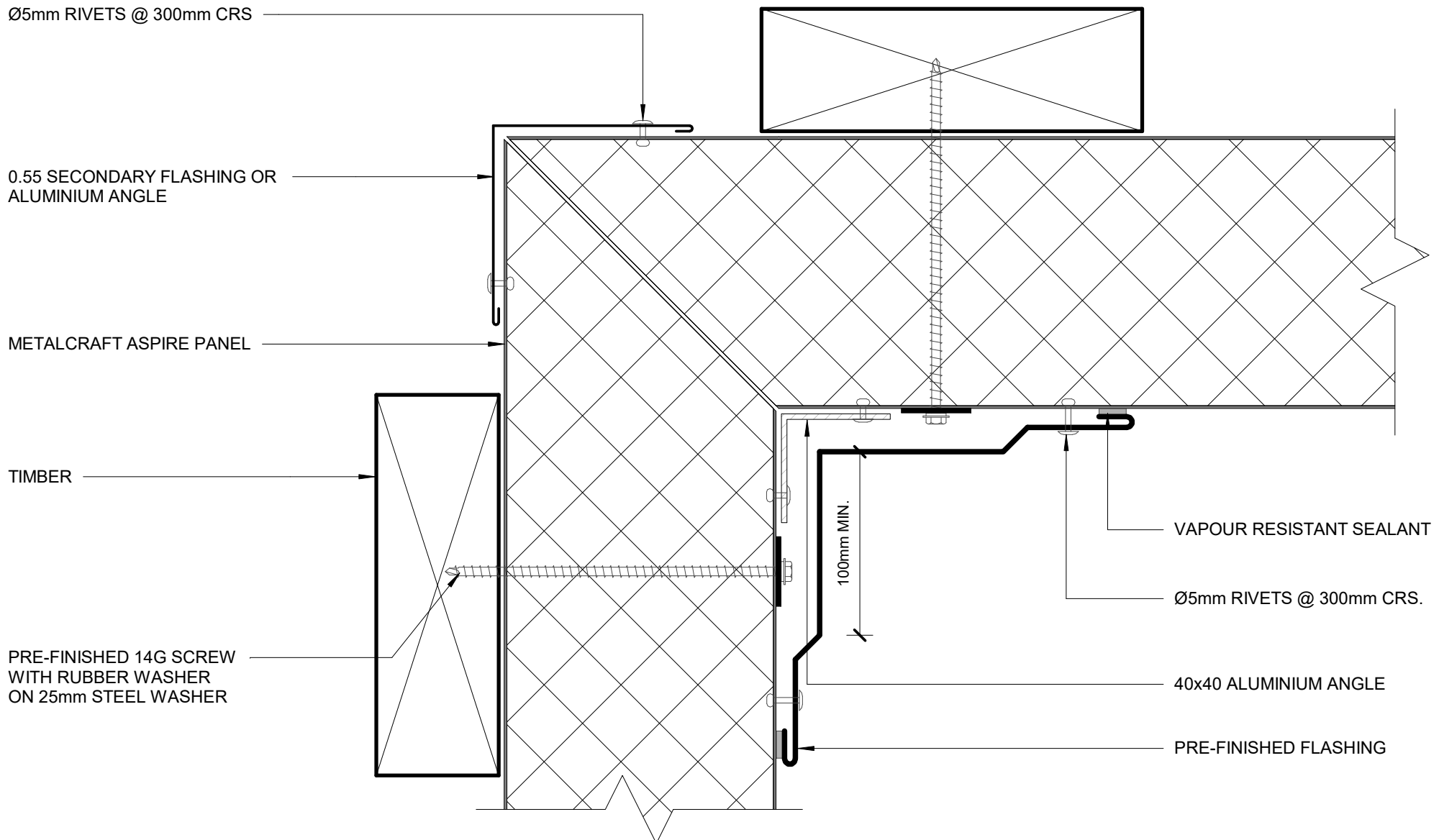
Reference ASPWD

Date 22.06.2023

Scale 1 : 2

Sheet

**11 / 20**



Ø5mm RIVETS @ 300mm CRS

0.55 SECONDARY FLASHING OR ALUMINIUM ANGLE

METALCRAFT ASPIRE PANEL

TIMBER

PRE-FINISHED 14G SCREW WITH RUBBER WASHER ON 25mm STEEL WASHER

VAPOUR RESISTANT SEALANT

Ø5mm RIVETS @ 300mm CRS.

40x40 ALUMINIUM ANGLE

PRE-FINISHED FLASHING

100mm MIN.

ALTERNATIVE INTERNAL CORNER

EXTERNAL WALL DETAILS

Aspire panel

Rev. 1.0

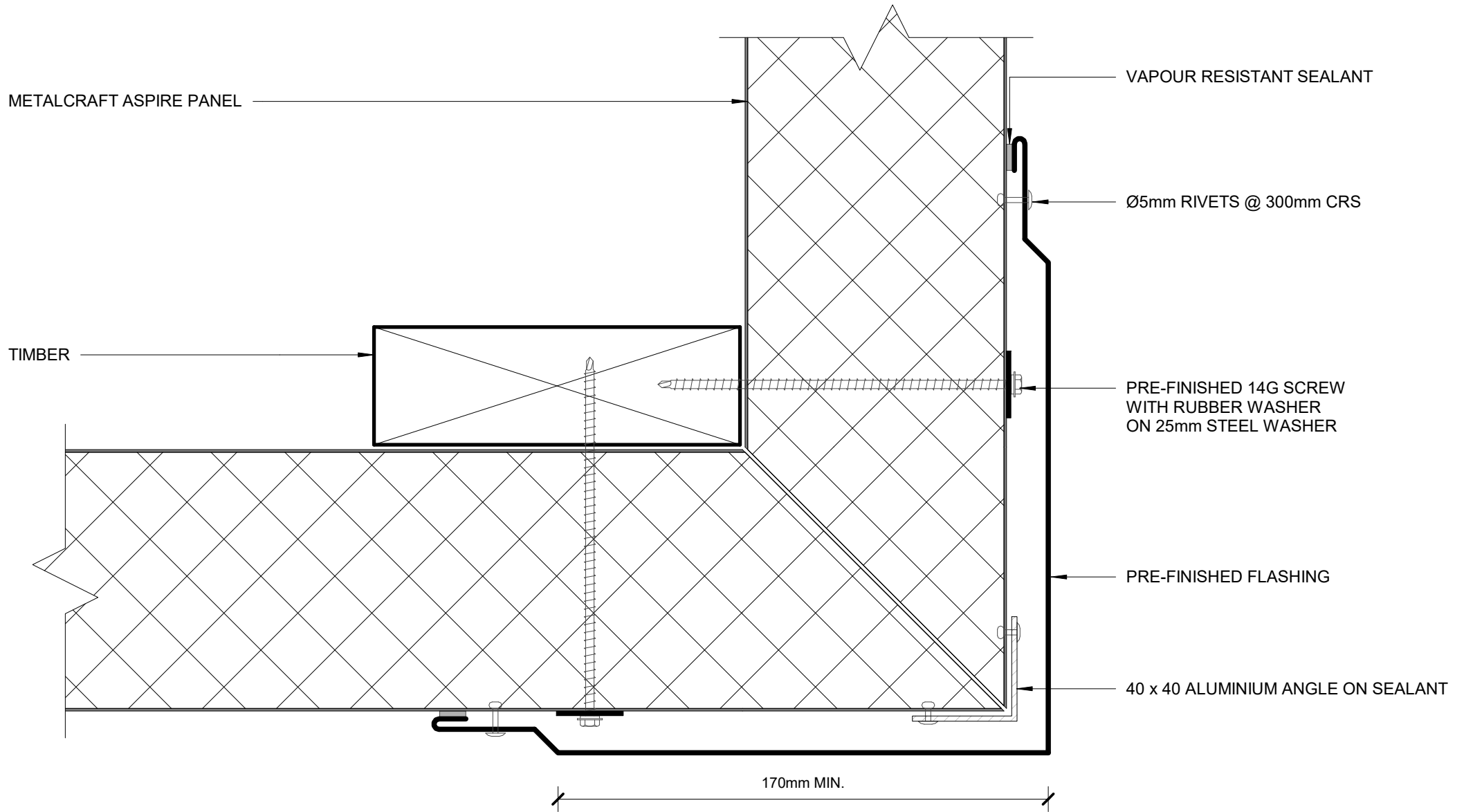
Reference ASPWD

Date 22.06.2023

Scale 1 : 2

Sheet

12 / 20



METALCRAFT ASPIRE PANEL

TIMBER

VAPOUR RESISTANT SEALANT

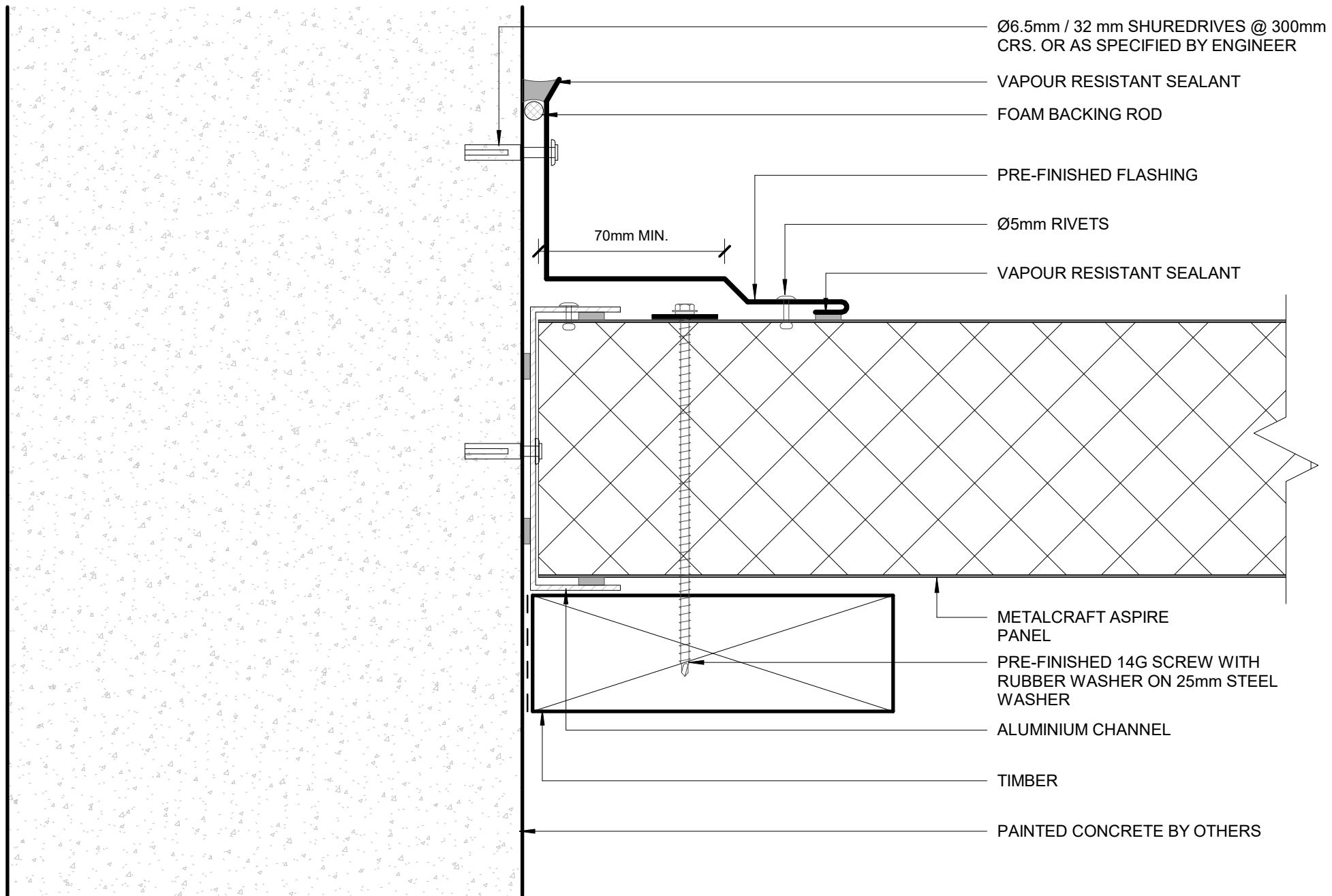
Ø5mm RIVETS @ 300mm CRS

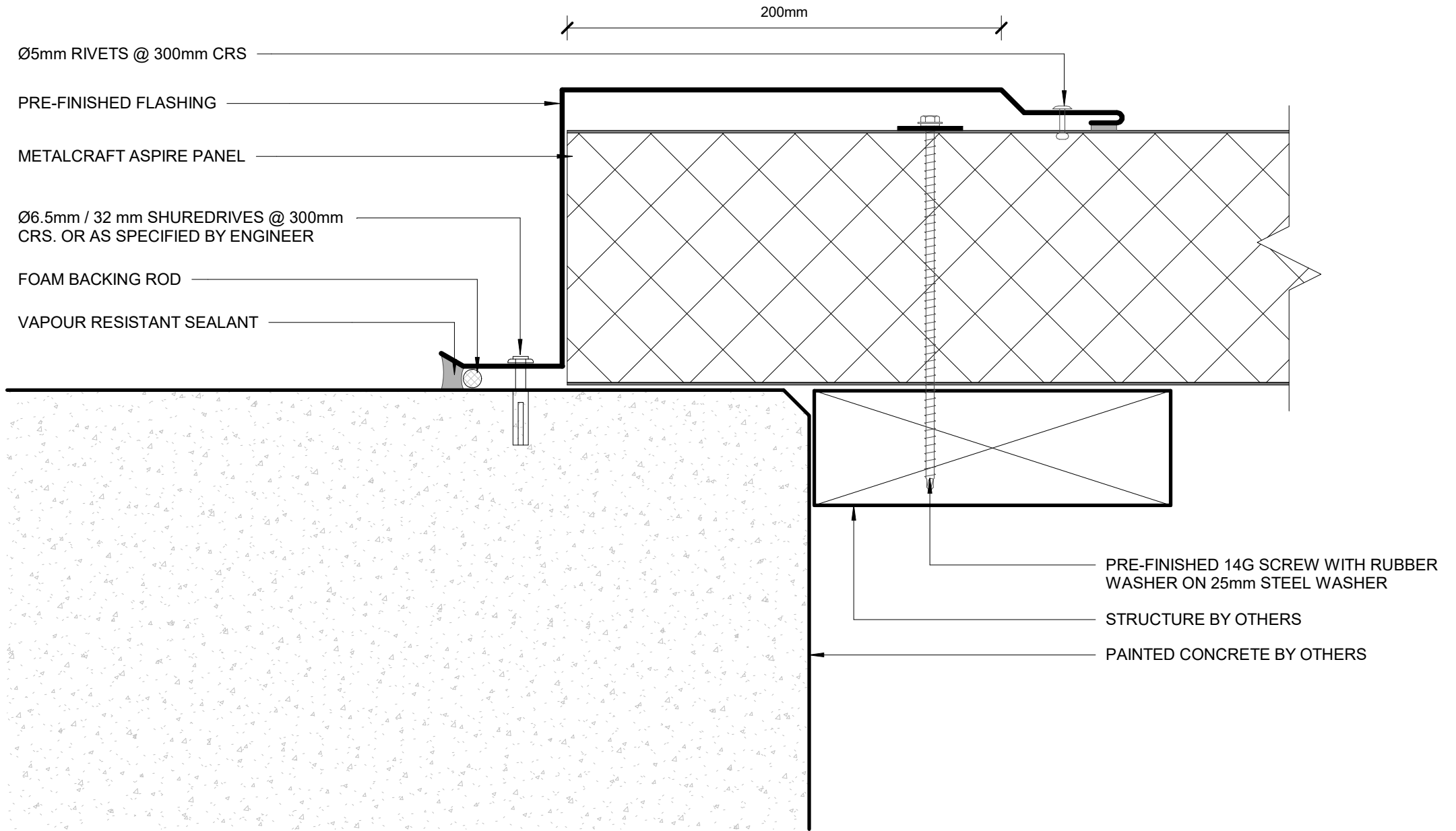
PRE-FINISHED 14G SCREW  
WITH RUBBER WASHER  
ON 25mm STEEL WASHER

PRE-FINISHED FLASHING

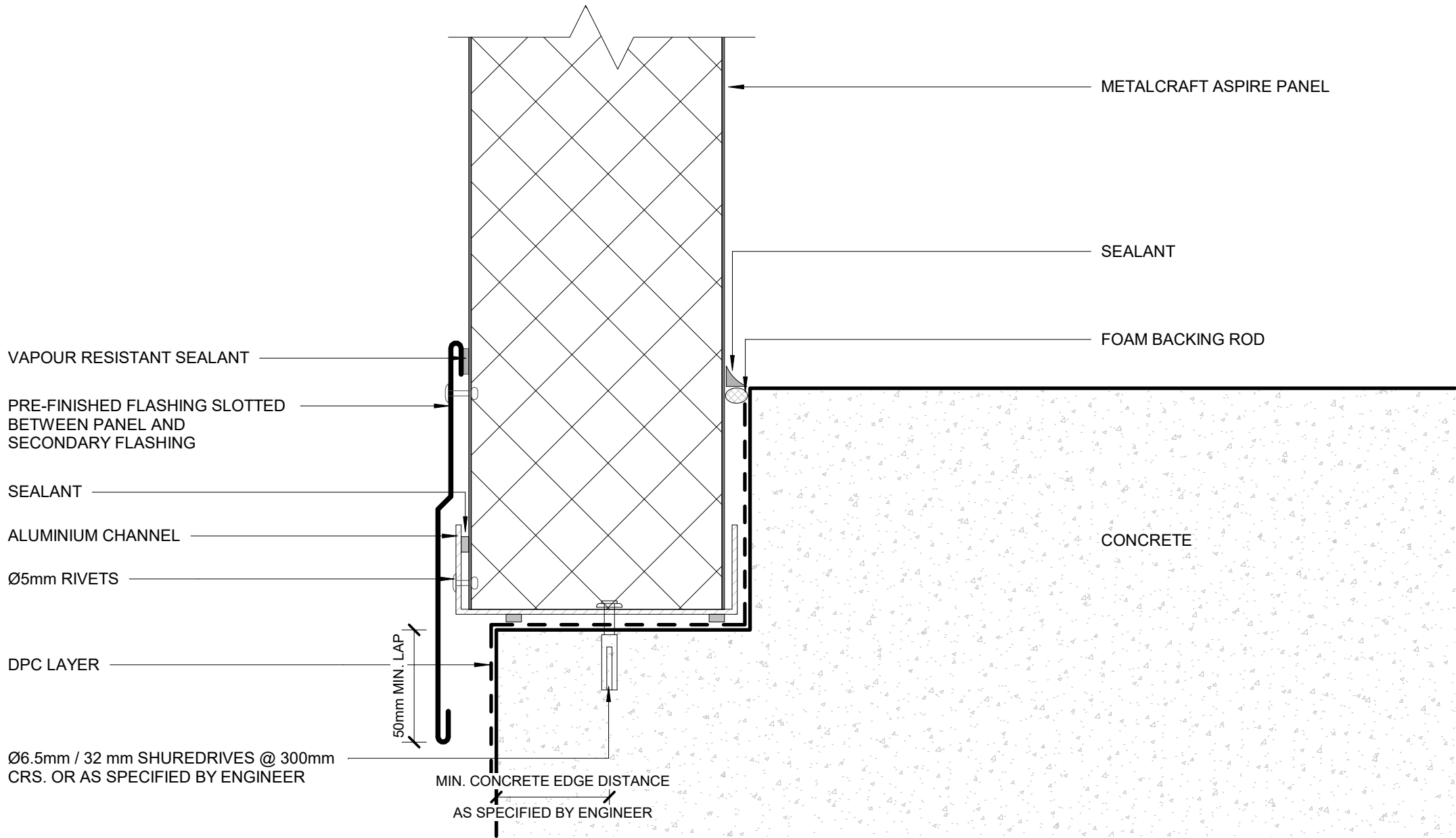
40 x 40 ALUMINIUM ANGLE ON SEALANT

170mm MIN.









VAPOUR RESISTANT SEALANT

PRE-FINISHED FLASHING SLOTTED  
BETWEEN PANEL AND  
SECONDARY FLASHING

SEALANT

ALUMINIUM CHANNEL

Ø5mm RIVETS

DPC LAYER

Ø6.5mm / 32mm SHUREDRIVES @ 300mm  
CRS. OR AS SPECIFIED BY ENGINEER

50mm MIN. LAP

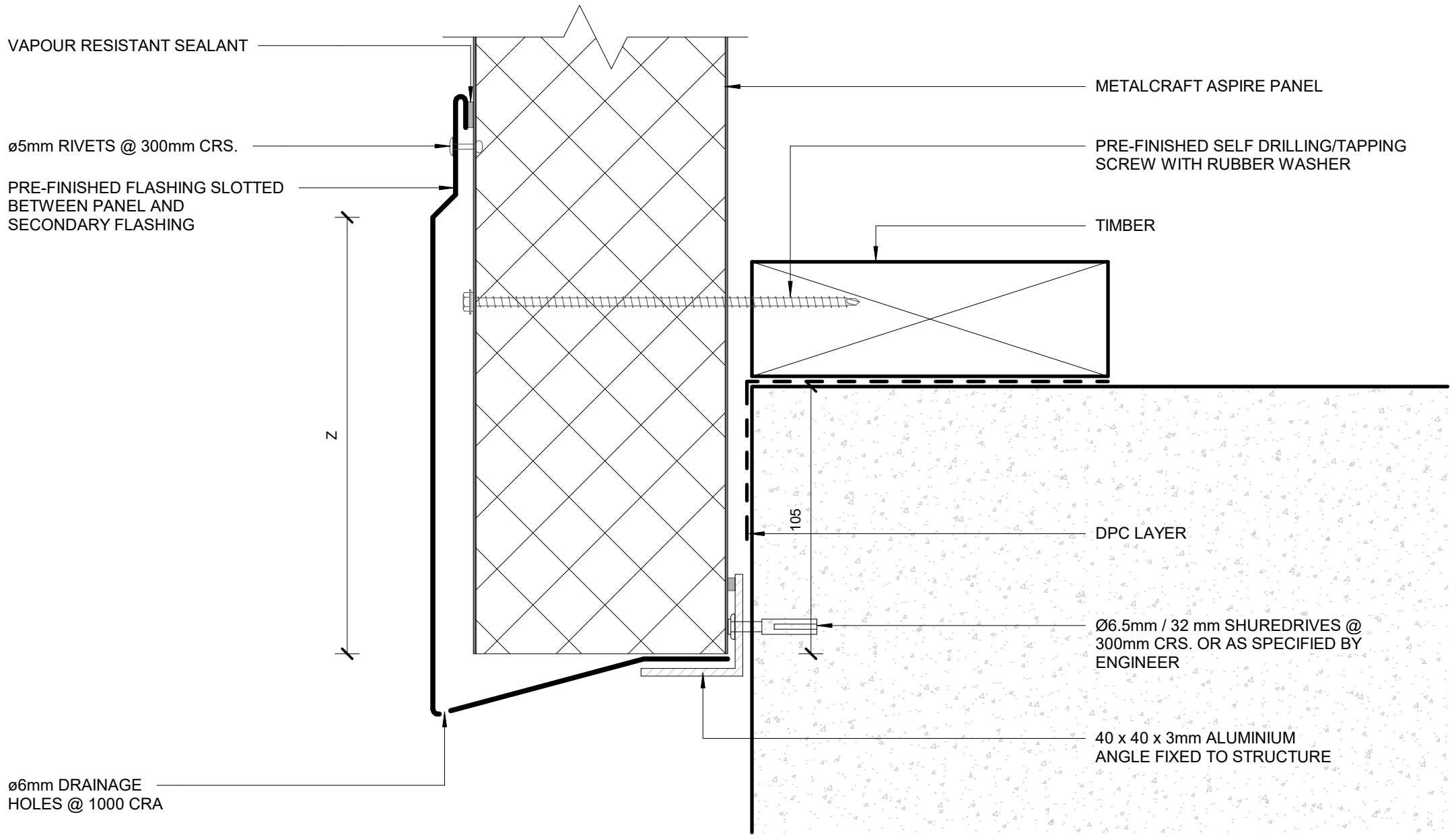
MIN. CONCRETE EDGE DISTANCE  
AS SPECIFIED BY ENGINEER

METALCRAFT ASPIRE PANEL

SEALANT

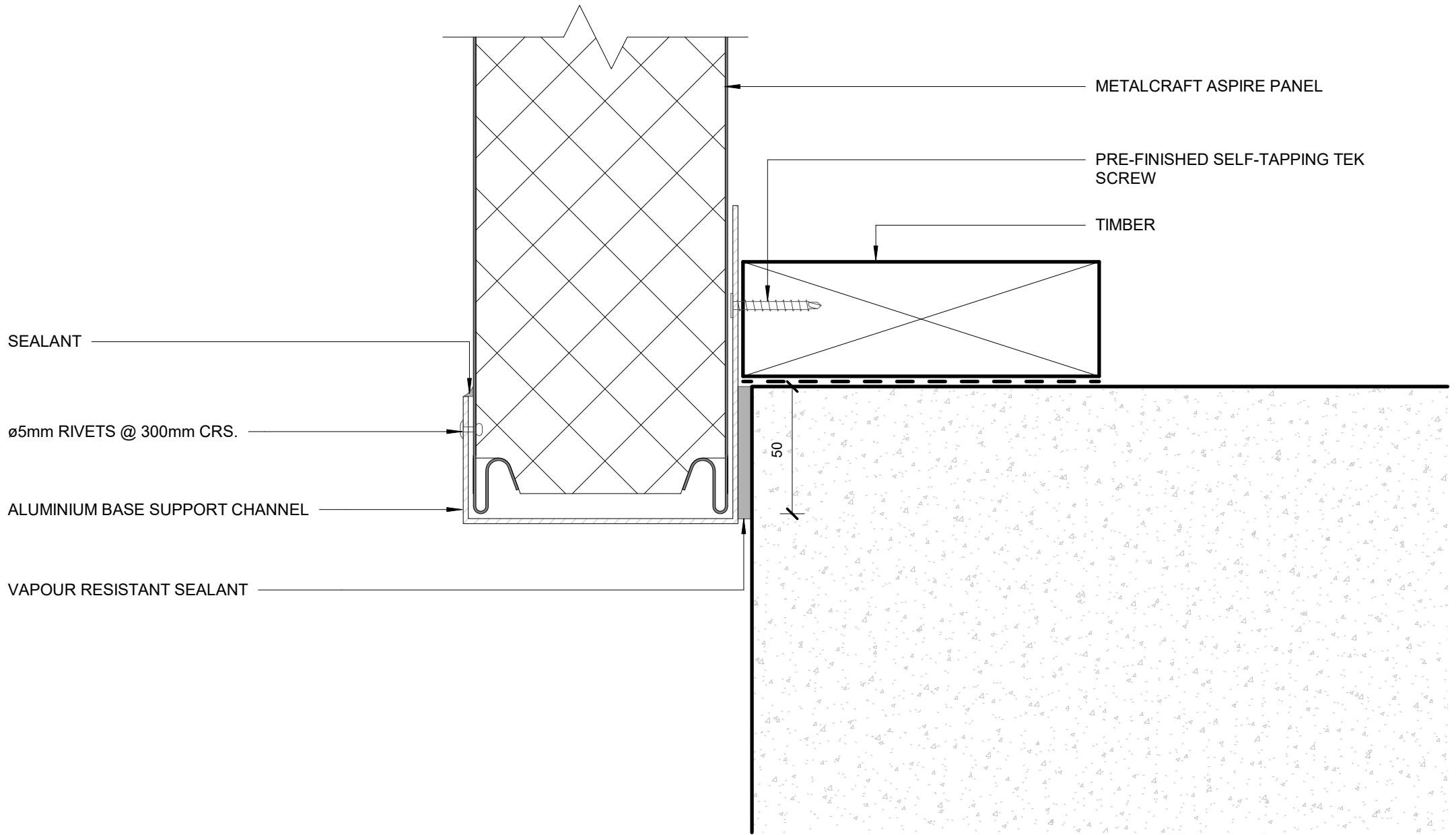
FOAM BACKING ROD

CONCRETE

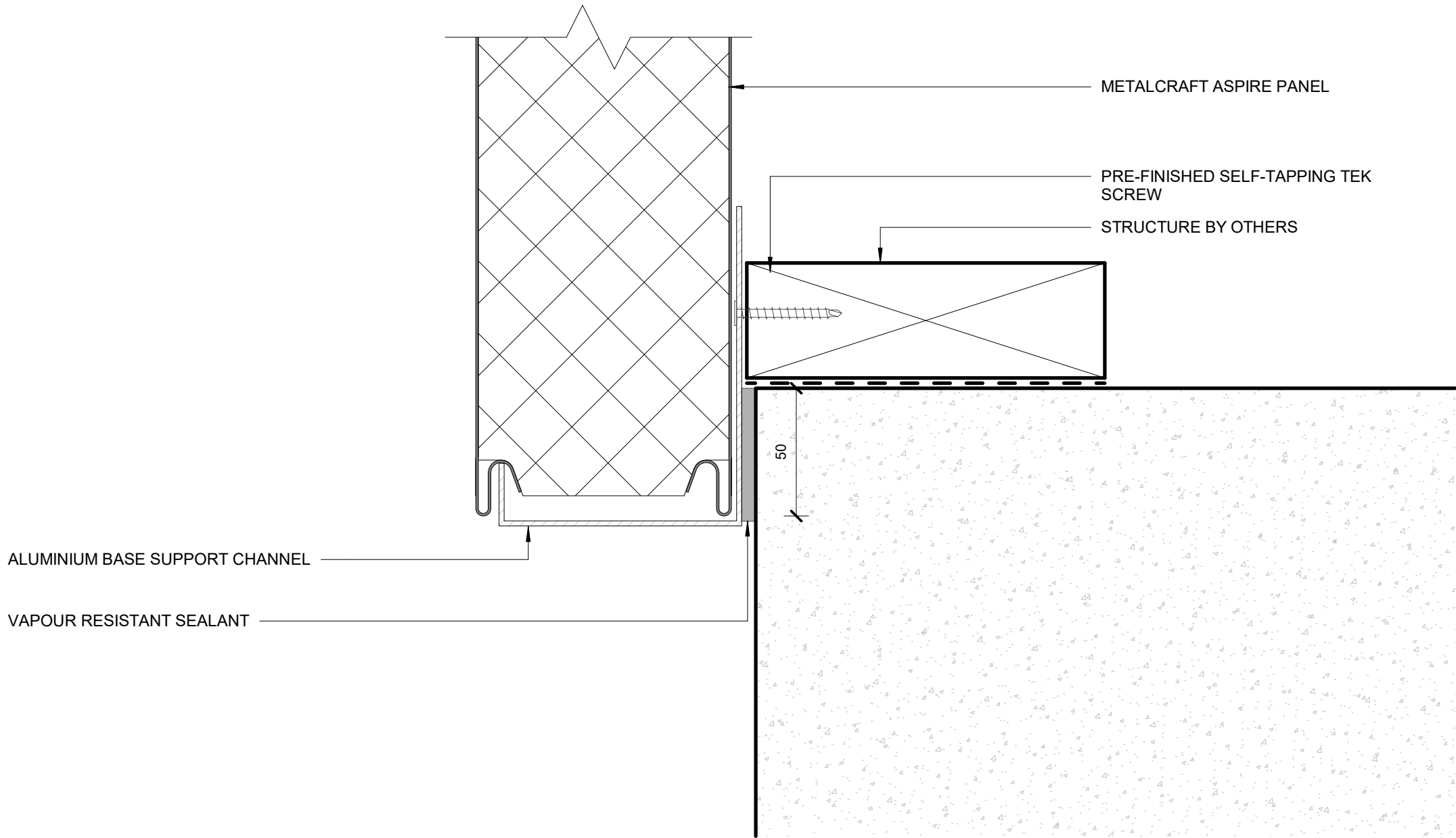


**BOTTOM OF CLADDING 02**

**EXTERNAL WALL DETAILS**



**BOTTOM OF CLADDING 03**  
**EXTERNAL WALL DETAILS**



ALUMINIUM BASE SUPPORT CHANNEL

VAPOUR RESISTANT SEALANT

METALCRAFT ASPIRE PANEL

PRE-FINISHED SELF-TAPPING TEK SCREW

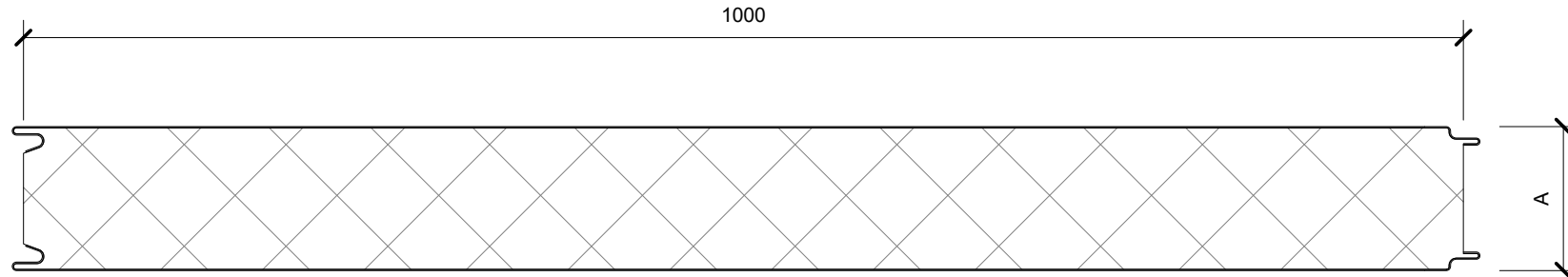
STRUCTURE BY OTHERS

50

**BOTTOM OF CLADDING 04**

**EXTERNAL WALL DETAILS**

**ASPIRE PANEL**



FLAT FINISH - AVAILABLE BOTH SIDES

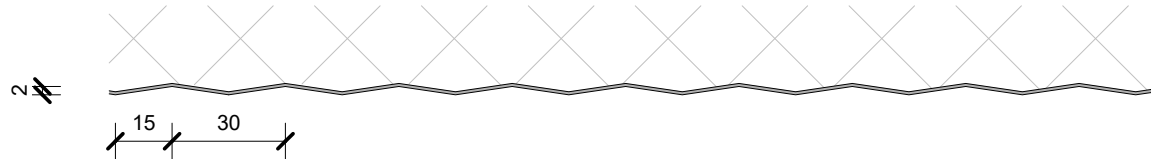
SCALE @ 1:5

A= 50, 75, 100, 125, 150mm

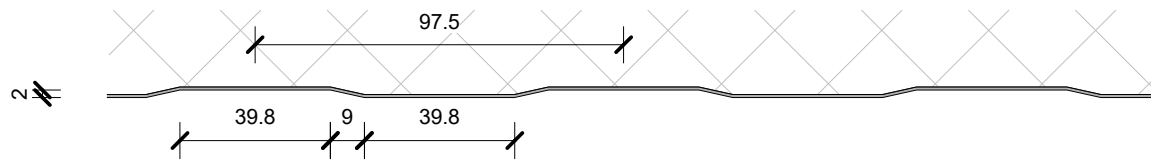
**INTERNAL LINER FINISHES**

SCALE @ 1:2

SILKLINE FINISH  
- ONE SIDE ONLY



MESA FINISH  
- ONE SIDE ONLY



RIBBED FINISH  
- AVAILABLE BOTH SIDES

