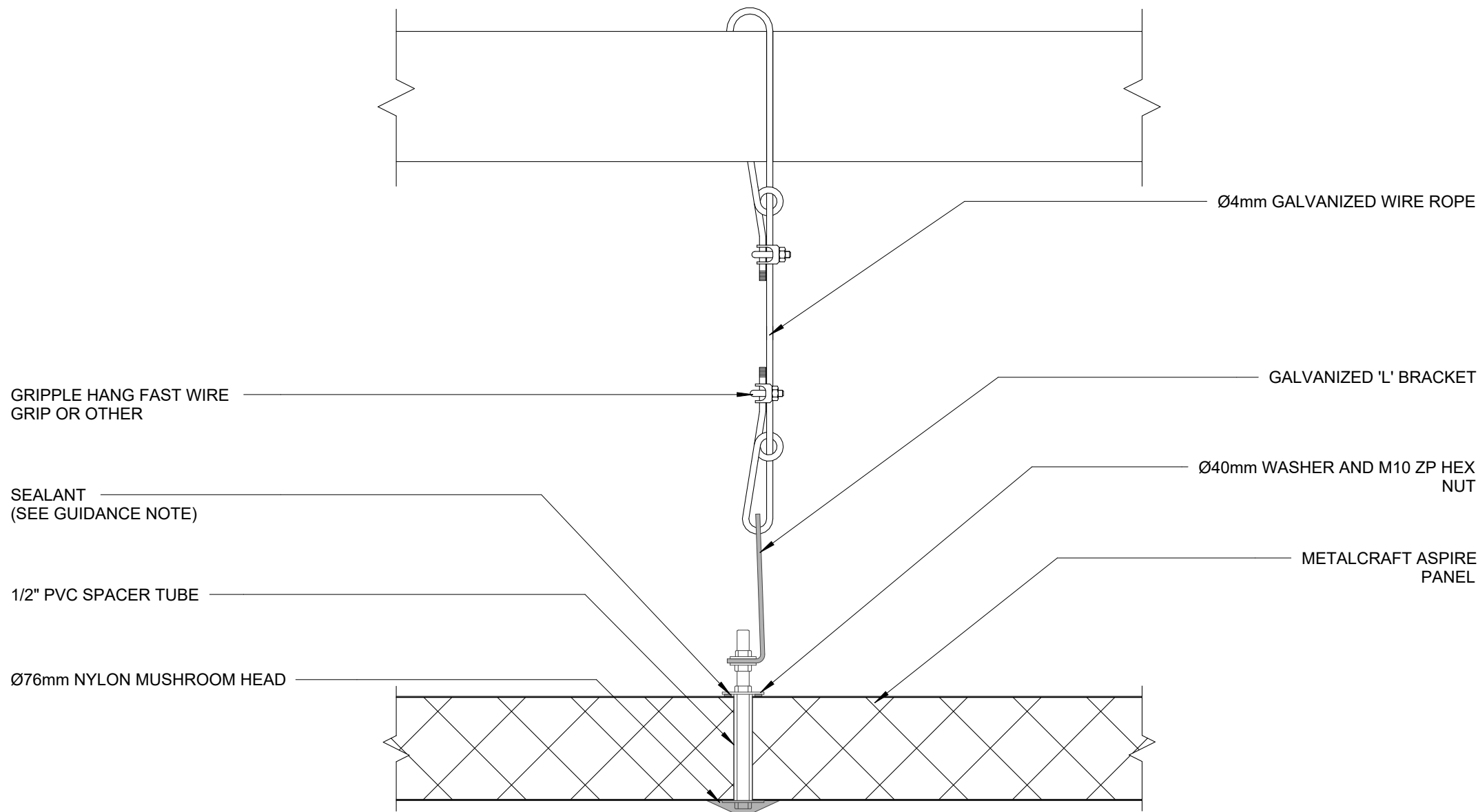


# Aspire panel

## CONTROLLED ENVIRONMENT

### DETAIL LIST

		<u>Revision</u>	<u>Date</u>
00 / 23	COVER SHEET		
01 / 23	CEILING SUSPENSION 01	1.0	14.04.2025
02 / 23	CEILING SUSPENSION 02	1.0	14.04.2025
03 / 23	FREEZER FLOOR 01	1.0	14.04.2025
04 / 23	FREEZER FLOOR 02	1.0	14.04.2025
05 / 23	FREEZER FLOOR 03	1.0	14.04.2025
06 / 23	PROCESS FLOOR 01	1.0	14.04.2025
07 / 23	PROCESS FLOOR 02	1.0	14.04.2025
08 / 23	PROCESS FLOOR 03	1.0	14.04.2025
09 / 23	PARTITION 01	1.0	14.04.2025
10 / 23	GIRT 01	1.0	14.04.2025
11 / 23	GIRT 02	1.0	14.04.2025
12 / 23	GIRT 03	1.0	14.04.2025
13 / 23	VERTICAL CORNER COOLROOM / FREEZER	1.0	14.04.2025
14 / 23	ROOF TO WALL COOLROOM / FREEZER 01	1.0	14.04.2025
15 / 23	COOLROOM / FREEZER CONNECTION 01	1.0	14.04.2025
16 / 23	FREEZER PARTITION 01	1.0	14.04.2025
17 / 23	COOLROOM / FREEZER CEILING DETAIL 01	1.0	14.04.2025
18 / 23	CEILING TO WALL DETAIL 01	1.0	14.04.2025
19 / 23	TYPICAL WALL JOINT FREEZER / COOLROOM 01	1.0	14.04.2025
20 / 23	CLEAN ROOM ROOF TO WALL	1.0	14.04.2025
21 / 23	PANEL PROFILES AND SIZES	1.0	14.04.2025
22 / 23	COOL ROOM BASE DETAIL 01	1.0	14.04.2025
23 / 23	COOL ROOM BASE DETAIL 02	1.0	14.04.2025



#### GUIDANCE NOTES:

1. WHEN SPECIFIC FIRE DESIGN IS REQUIRED FOR INSTALLATION OF PANELS STEEL FLASHINGS MUST BE USED.
2. FIRE RESISTANT SEALANT MUST BE USED WHEN SPECIFIC FIRE DESIGN IS REQUIRED.

**DISCLAIMER:**  
All details are to be used for indicative purposes only and the designer should consult both the MRM code of practice and E2 and all other relevant building codes. Details of the supporting mechanisms are indicative only. These installation details must be read in conjunction with all other product literature available for download from [www.metalcraftinsulatedpanels.co.nz](http://www.metalcraftinsulatedpanels.co.nz)

**Metalcraft**  
Insulated Panels  
[www.metalcraftgroup.co.nz](http://www.metalcraftgroup.co.nz)

## CEILING SUSPENSION 01

CONTROLLED ENVIRONMENT

Aspire panel

Rev. 1.0

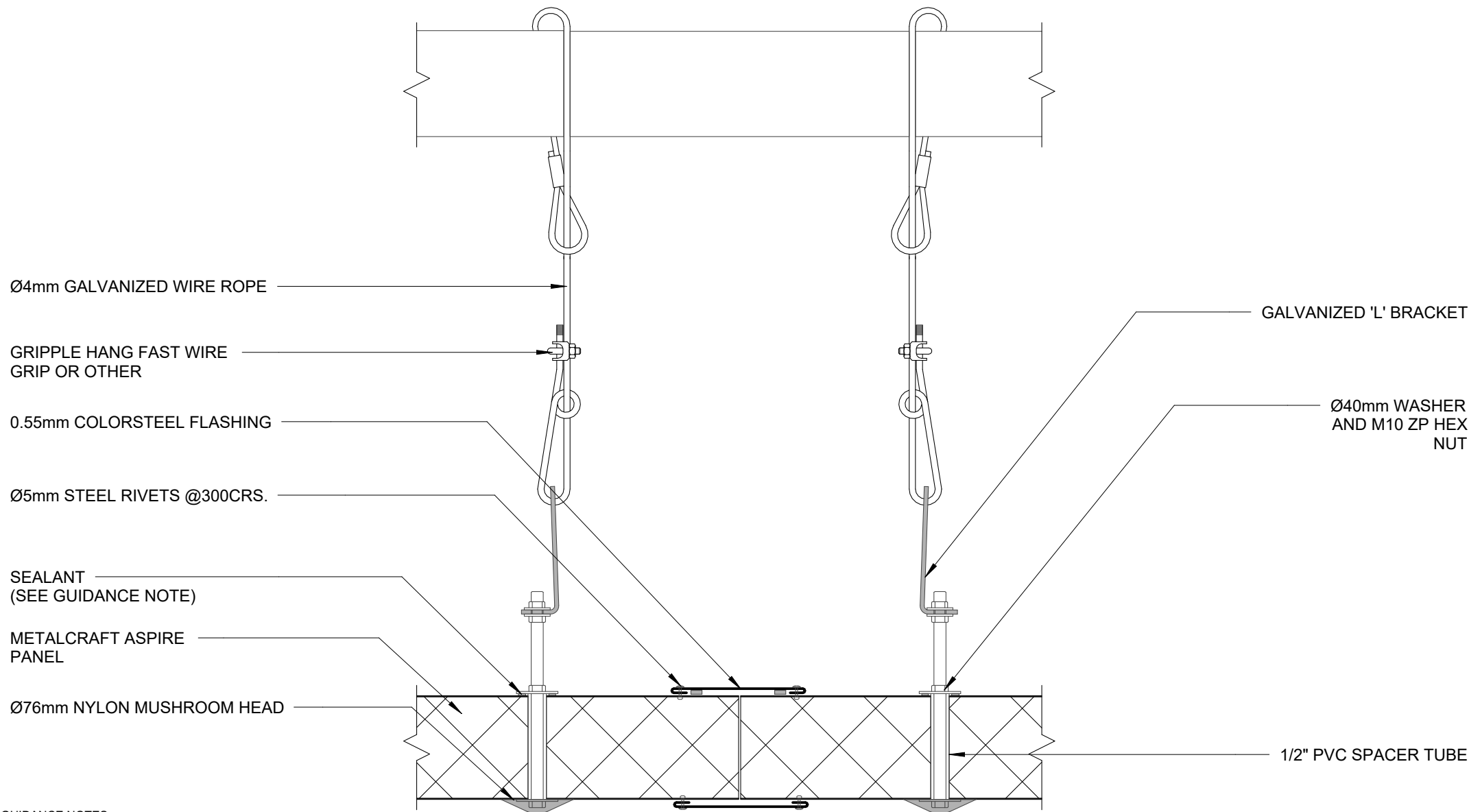
Reference ASEPS

Date 14.04.2025

Scale 1 : 5

Sheet

**01 / 23**



#### GUIDANCE NOTES:

1. WHEN SPECIFIC FIRE DESIGN IS REQUIRED FOR INSTALLATION OF PANELS STEEL FLASHINGS MUST BE USED.
2. FIRE RESISTANT SEALANT MUST BE USED WHEN SPECIFIC FIRE DESIGN IS REQUIRED.

**DISCLAIMER:**  
All details are to be used for indicative purposes only and the designer should consult both the MRM code of practice and E2 and all other relevant building codes. Details of the supporting mechanisms are indicative only. These installation details must be read in conjunction with all other product literature available for download from [www.metalcraftinsulatedpanels.co.nz](http://www.metalcraftinsulatedpanels.co.nz)

**Metalcraft**  
Insulated Panels  
[www.metalcraftgroup.co.nz](http://www.metalcraftgroup.co.nz)

Aspire panel

Rev. 1.0

**CEILING SUSPENSION 02**  
CONTROLLED ENVIRONMENT

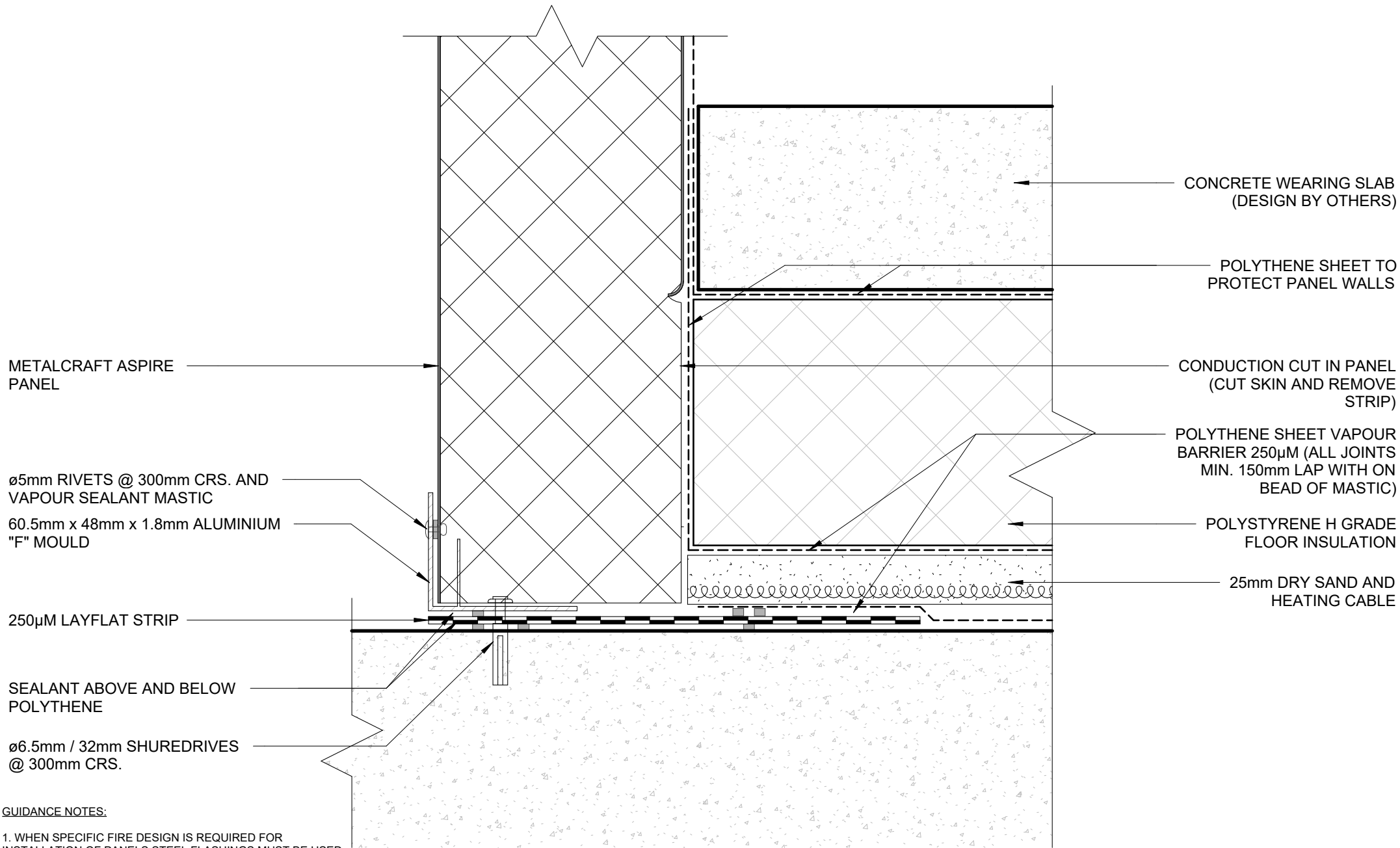
Reference ASEPS

Date 14.04.2025

Scale 1 : 5

Sheet

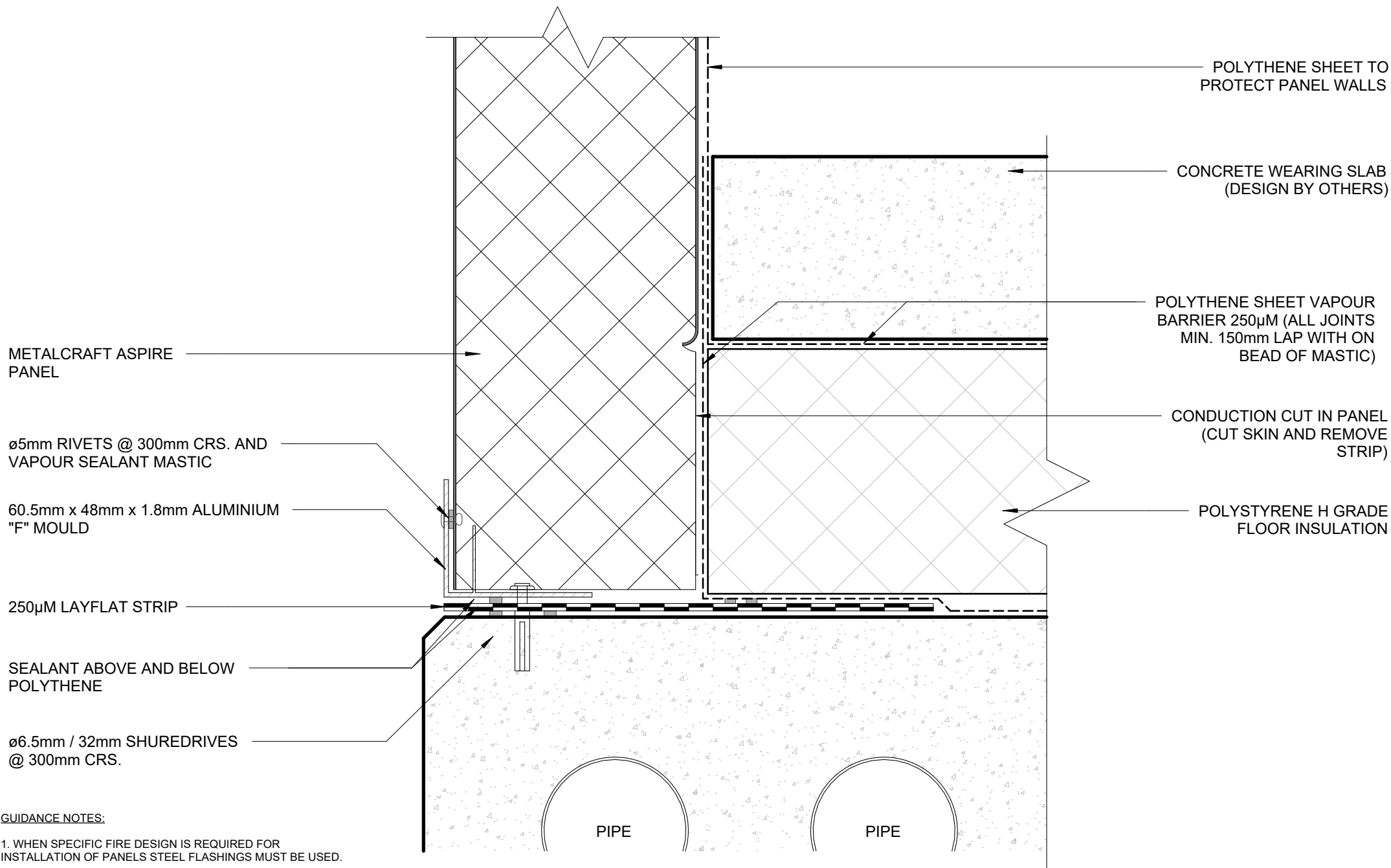
**02 / 23**



**GUIDANCE NOTES:**

1. WHEN SPECIFIC FIRE DESIGN IS REQUIRED FOR INSTALLATION OF PANELS STEEL FLASHINGS MUST BE USED.

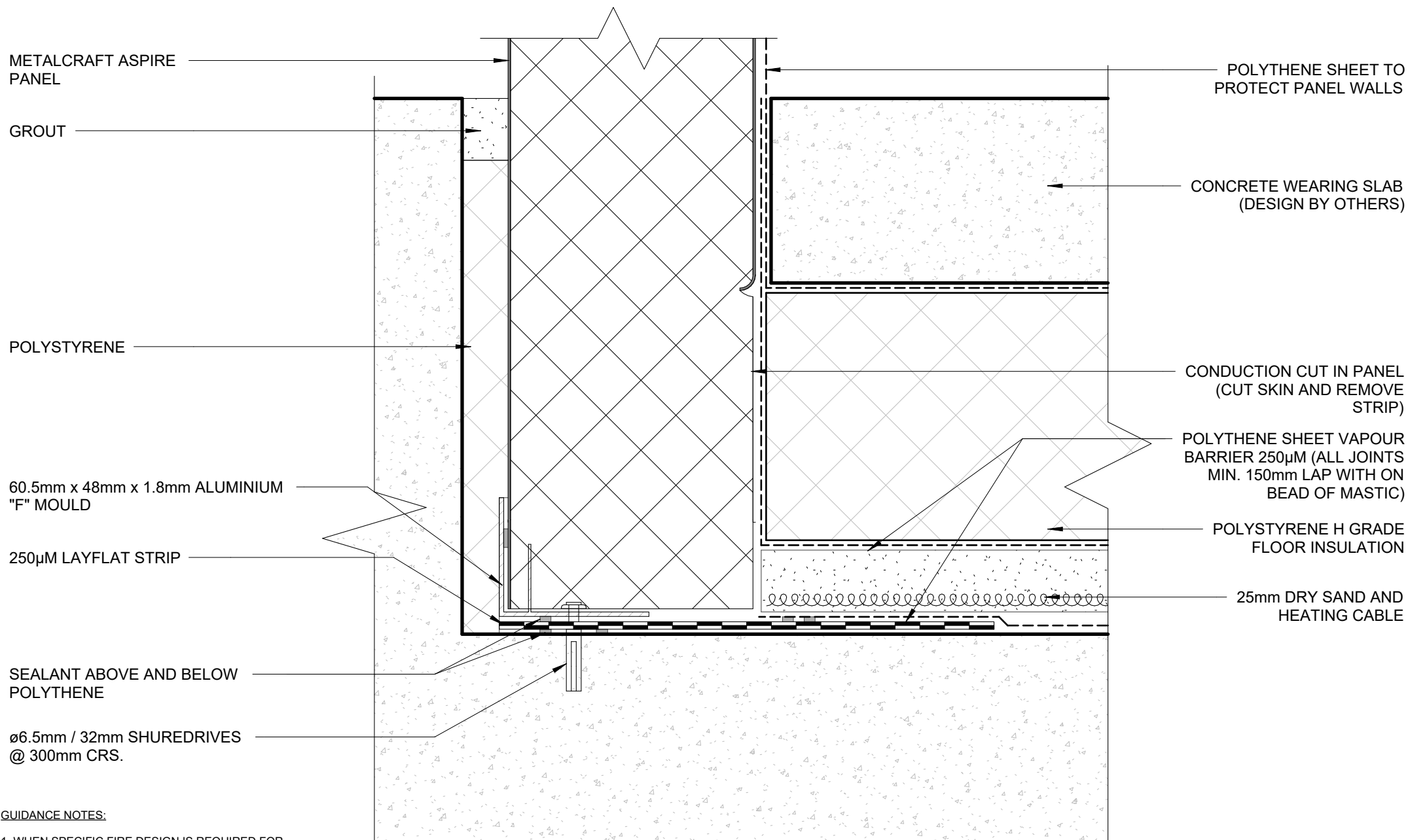
2. FIRE RESISTANT SEALANT MUST BE USED WHEN SPECIFIC FIRE DESIGN IS REQUIRED.



#### GUIDANCE NOTES:

1. WHEN SPECIFIC FIRE DESIGN IS REQUIRED FOR INSTALLATION OF PANELS STEEL FLASHINGS MUST BE USED.

2. FIRE RESISTANT SEALANT MUST BE USED WHEN SPECIFIC FIRE DESIGN IS REQUIRED.



#### GUIDANCE NOTES:

1. WHEN SPECIFIC FIRE DESIGN IS REQUIRED FOR INSTALLATION OF PANELS STEEL FLASHINGS MUST BE USED.
2. FIRE RESISTANT SEALANT MUST BE USED WHEN SPECIFIC FIRE DESIGN IS REQUIRED.

**Metalcraft**  
Insulated Panels  
www.metalcraftgroup.co.nz

**DISCLAIMER:**  
All details are to be used for indicative purposes only and the designer should consult both the MRM code of practice and E2 and all other relevant building codes. Details of the supporting mechanisms are indicative only. These installation details must be read in conjunction with all other product literature available for download from [www.metalcraftinsulatedpanels.co.nz](http://www.metalcraftinsulatedpanels.co.nz)

Aspire panel

Rev. 1.0

**FREEZER FLOOR 03**  
**CONTROLLED ENVIRONMENT**

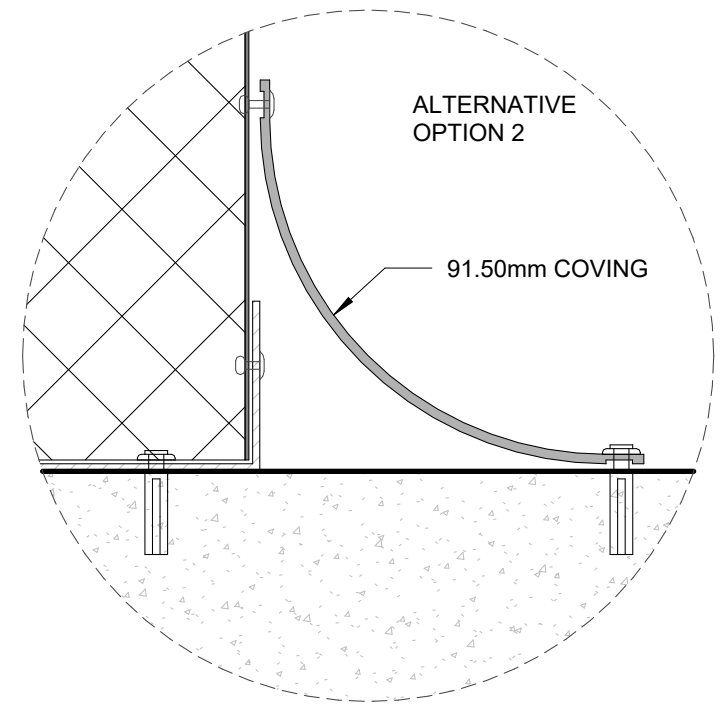
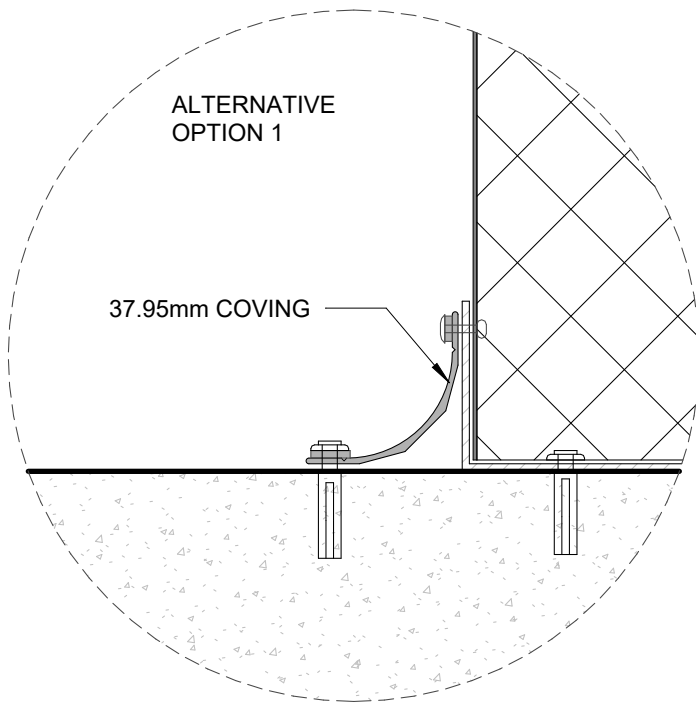
Reference ASEPS

Date 14.04.2025

Scale 1 : 2

Sheet

**05 / 23**



Ø5mm/16mm RIVETS @  
300mm CRS WITH SEALANT  
(SEE GUIDANCE NOTE)

ALUMINIUM COVE BASE

F.F.L.

ø6.5mm / 32mm SHUREDRIVES  
@ 300mm CRS.

METALCRAFT ASPIRE  
PANEL

#### GUIDANCE NOTES:

1. WHEN SPECIFIC FIRE DESIGN IS REQUIRED FOR  
INSTALLATION OF PANELS STEEL FLASHINGS MUST BE USED.

2. FIRE RESISTANT SEALANT MUST BE USED WHEN SPECIFIC  
FIRE DESIGN IS REQUIRED.

#### DISCLAIMER:

All details are to be used for indicative purposes only and the designer should consult both the MRM code of practice and E2 and all other relevant building codes. Details of the supporting mechanisms are indicative only. These installation details must be read in conjunction with all other product literature available for download from [www.metalcraftinsulatedpanels.co.nz](http://www.metalcraftinsulatedpanels.co.nz)

**Metalcraft**  
Insulated Panels  
[www.metalcraftgroup.co.nz](http://www.metalcraftgroup.co.nz)

Aspire panel

Rev. 1.0

Reference ASEPS

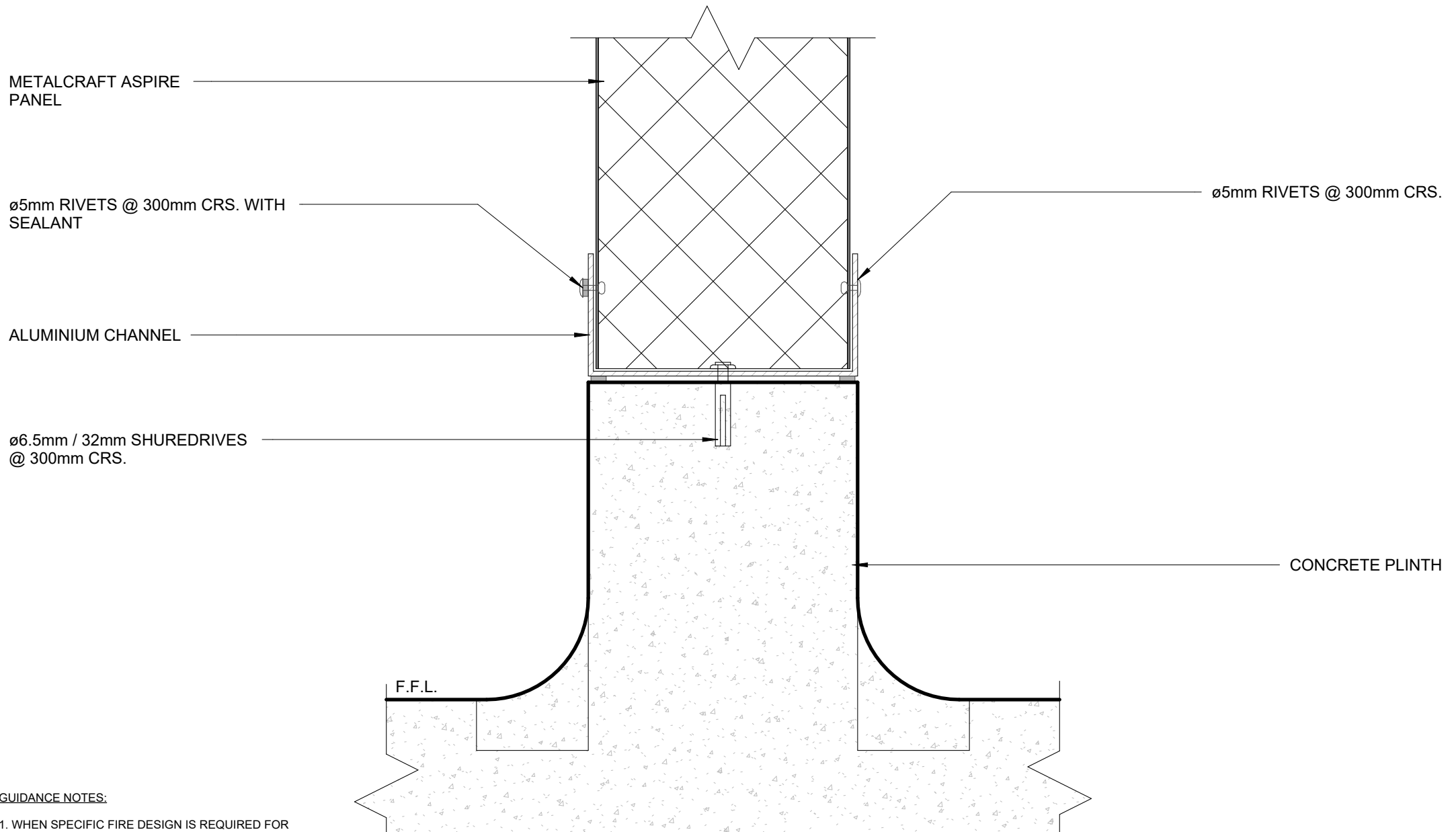
Date 14.04.2025

Scale 1 : 2

Sheet

PROCESS FLOOR 01  
CONTROLLED ENVIRONMENT

06 / 23



**GUIDANCE NOTES:**

1. WHEN SPECIFIC FIRE DESIGN IS REQUIRED FOR INSTALLATION OF PANELS STEEL FLASHINGS MUST BE USED.

2. FIRE RESISTANT SEALANT MUST BE USED WHEN SPECIFIC FIRE DESIGN IS REQUIRED.

**DISCLAIMER:**  
All details are to be used for indicative purposes only and the designer should consult both the MRM code of practice and E2 and all other relevant building codes. Details of the supporting mechanisms are indicative only. These installation details must be read in conjunction with all other product literature available for download from [www.metalcraftinsulatedpanels.co.nz](http://www.metalcraftinsulatedpanels.co.nz)

**Metalcraft**  
Insulated Panels  
[www.metalcraftgroup.co.nz](http://www.metalcraftgroup.co.nz)

Aspire panel

Rev. 1.0

**PROCESS FLOOR 02**  
**CONTROLLED ENVIRONMENT**

Reference ASEPS

Date 14.04.2025

Scale 1 : 2

Sheet

**07 / 23**



METALCRAFT ASPIRE  
PANEL

ALUMINIUM CHANNEL

ø6.5mm / 32mm SHUREDRIVES  
@ 300mm CRS.

F.F.L.

ø5mm RIVETS @ 300mm CRS.

SEALANT

**GUIDANCE NOTES:**

1. WHEN SPECIFIC FIRE DESIGN IS REQUIRED FOR  
INSTALLATION OF PANELS STEEL FLASHINGS MUST BE USED.

2. FIRE RESISTANT SEALANT MUST BE USED WHEN SPECIFIC  
FIRE DESIGN IS REQUIRED.

**DISCLAIMER:**

All details are to be used for indicative purposes only and the designer should consult both the MRM  
code of practice and E2 and all other relevant building codes. Details of the supporting mechanisms are  
indicative only. These installation details must be read in conjunction with all other product literature  
available for download from [www.metalcraftinsulatedpanels.co.nz](http://www.metalcraftinsulatedpanels.co.nz)

**Metalcraft**  
Insulated Panels  
[www.metalcraftgroup.co.nz](http://www.metalcraftgroup.co.nz)

Aspire panel

Rev. 1.0

Reference ASEPS

Date 14.04.2025

Scale 1 : 2

Sheet

**PROCESS FLOOR 03**  
**CONTROLLED ENVIRONMENT**

**08 / 23**

ø5mm RIVET TO CEILING

40mm x 40mm 2-3mm  
ALUMINIUM ANGLE

METALCRAFT ASPIRE  
PANEL

ø6.5mm / 32mm SHUREDRIVES  
@ 300mm CRS.

ø5mm RIVETS @300mm CRS.

ALUMINIUM CHANNEL

**GUIDANCE NOTES:**

1. WHEN SPECIFIC FIRE DESIGN IS REQUIRED FOR  
INSTALLATION OF PANELS STEEL FLASHINGS MUST BE USED.

2. FIRE RESISTANT SEALANT MUST BE USED WHEN SPECIFIC  
FIRE DESIGN IS REQUIRED.

**Metalcraft**  
Insulated Panels  
www.metalcraftgroup.co.nz

**DISCLAIMER:**

All details are to be used for indicative purposes only and the designer should consult both the MRM code of practice and E2 and all other relevant building codes. Details of the supporting mechanisms are indicative only. These installation details must be read in conjunction with all other product literature available for download from [www.metalcraftinsulatedpanels.co.nz](http://www.metalcraftinsulatedpanels.co.nz)

Aspire panel

Rev. 1.0

**PARTITION 01**  
**CONTROLLED ENVIRONMENT**

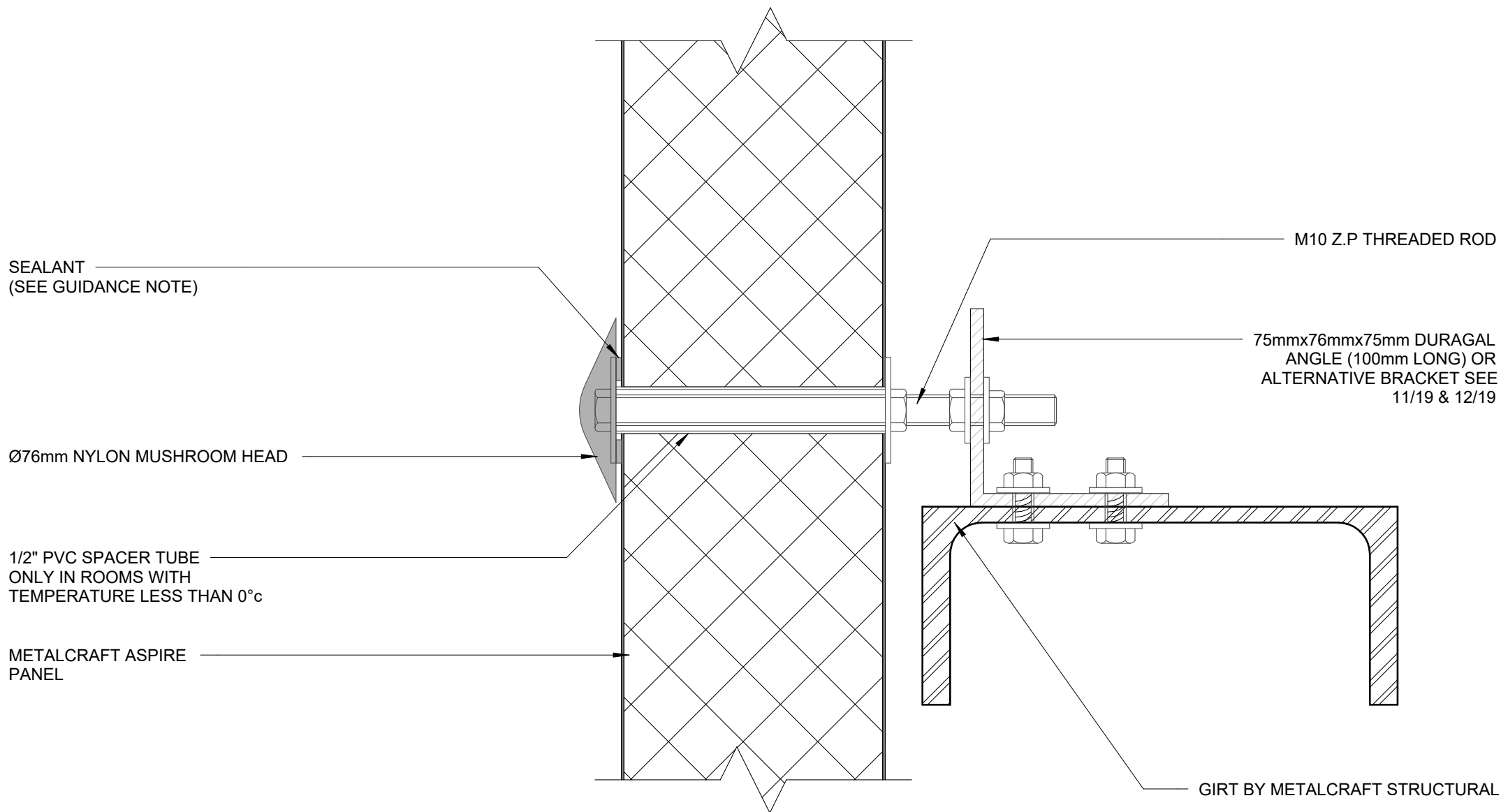
Reference ASEPS

Date 14.04.2025

Scale 1 : 2

Sheet

**09 / 23**



**GUIDANCE NOTES:**

1. WHEN SPECIFIC FIRE DESIGN IS REQUIRED FOR INSTALLATION OF PANELS STEEL FLASHINGS MUST BE USED.
2. FIRE RESISTANT SEALANT MUST BE USED WHEN SPECIFIC FIRE DESIGN IS REQUIRED.

**Metalcraft**  
Insulated Panels  
www.metalcraftgroup.co.nz

DISCLAIMER:  
All details are to be used for indicative purposes only and the designer should consult both the MRM code of practice and E2 and all other relevant building codes. Details of the supporting mechanisms are indicative only. These installation details must be read in conjunction with all other product literature available for download from [www.metalcraftinsulatedpanels.co.nz](http://www.metalcraftinsulatedpanels.co.nz)

Aspire panel

Rev. 1.0

GIRT 01  
CONTROLLED ENVIRONMENT

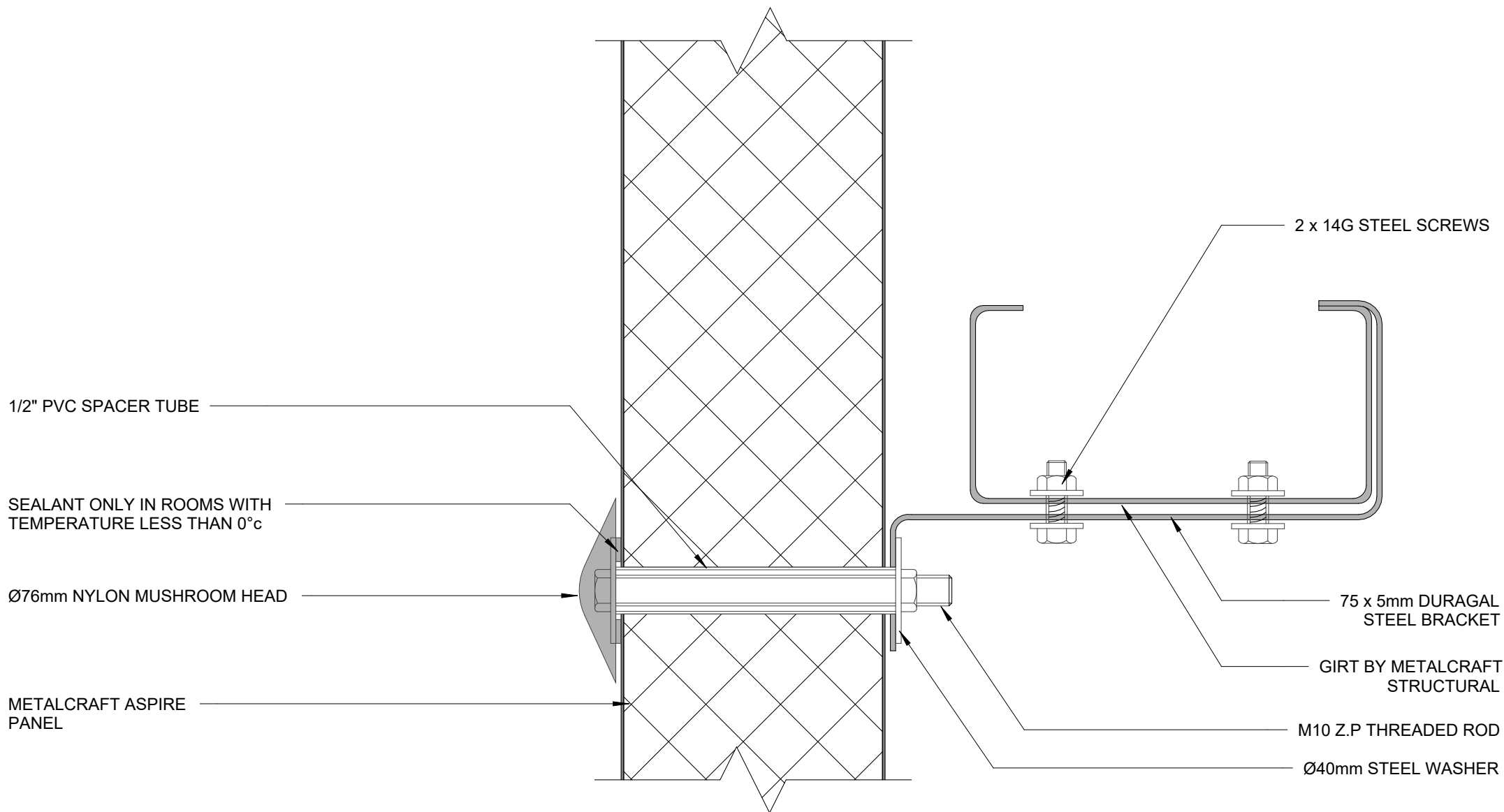
Reference ASEPS

Date 14.04.2025

Scale 1 : 2

Sheet

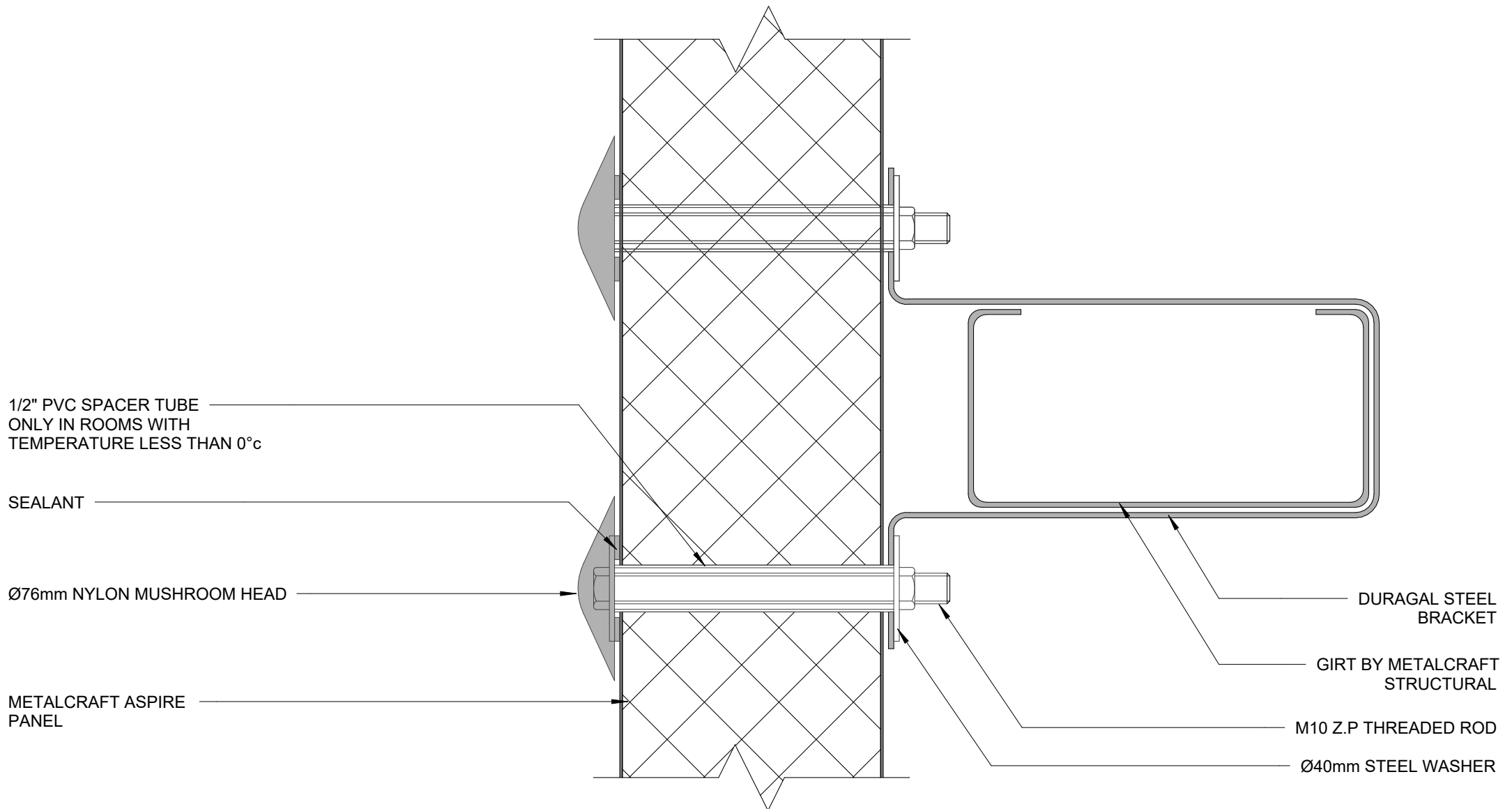
**10 / 23**



**GUIDANCE NOTES:**

1. WHEN SPECIFIC FIRE DESIGN IS REQUIRED FOR INSTALLATION OF PANELS STEEL FLASHINGS MUST BE USED.

2. FIRE RESISTANT SEALANT MUST BE USED WHEN SPECIFIC FIRE DESIGN IS REQUIRED.



**GUIDANCE NOTES:**

1. WHEN SPECIFIC FIRE DESIGN IS REQUIRED FOR  
INSTALLATION OF PANELS STEEL FLASHINGS MUST BE USED.

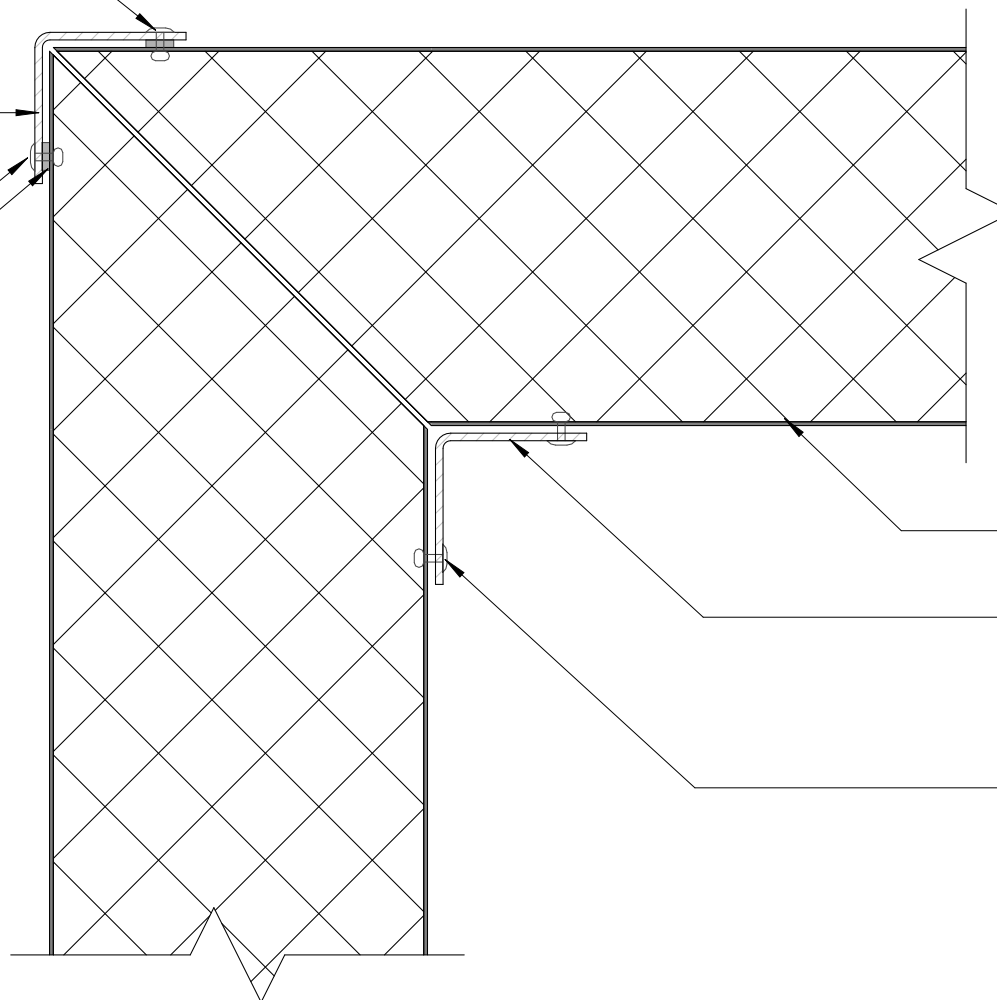
2. FIRE RESISTANT SEALANT MUST BE USED WHEN SPECIFIC  
FIRE DESIGN IS REQUIRED.

Ø5mm RIVETS @ 300mm CRS

40mm x 40mm 2-3mm  
ALUMINIUM ANGLE  
(SEE GUIDANCE NOTE)

Ø5mm RIVETS @ 300mm CRS.  
WITH SEALANT  
(SEE GUIDANCE NOTE)

SEALANT  
(SEE GUIDANCE NOTE)



METALCRAFT ASPIRE PANEL

40mm x 40mm 2-3mm ALUMINIUM  
ANGLE  
METALCRAFT ASPIRE SEALANT  
(SEE GUIDANCE NOTE)

Ø5mm RIVETS @ 300mm CRS.

**GUIDANCE NOTES:**

1. WHEN SPECIFIC FIRE DESIGN IS REQUIRED FOR INSTALLATION OF PANELS STEEL FLASHINGS MUST BE USED.
2. FIRE RESISTANT SEALANT MUST BE USED WHEN SPECIFIC FIRE DESIGN IS REQUIRED.

**Metalcraft**  
Insulated Panels  
[www.metalcraftgroup.co.nz](http://www.metalcraftgroup.co.nz)

DISCLAIMER:  
All details are to be used for indicative purposes only and the designer should consult both the MRM code of practice and E2 and all other relevant building codes. Details of the supporting mechanisms are indicative only. These installation details must be read in conjunction with all other product literature available for download from [www.metalcraftinsulatedpanels.co.nz](http://www.metalcraftinsulatedpanels.co.nz)

**VERTICAL CORNER COOLROOM / FREEZER**

Aspire panel

Rev. 1.0

**CONTROLLED ENVIRONMENT**

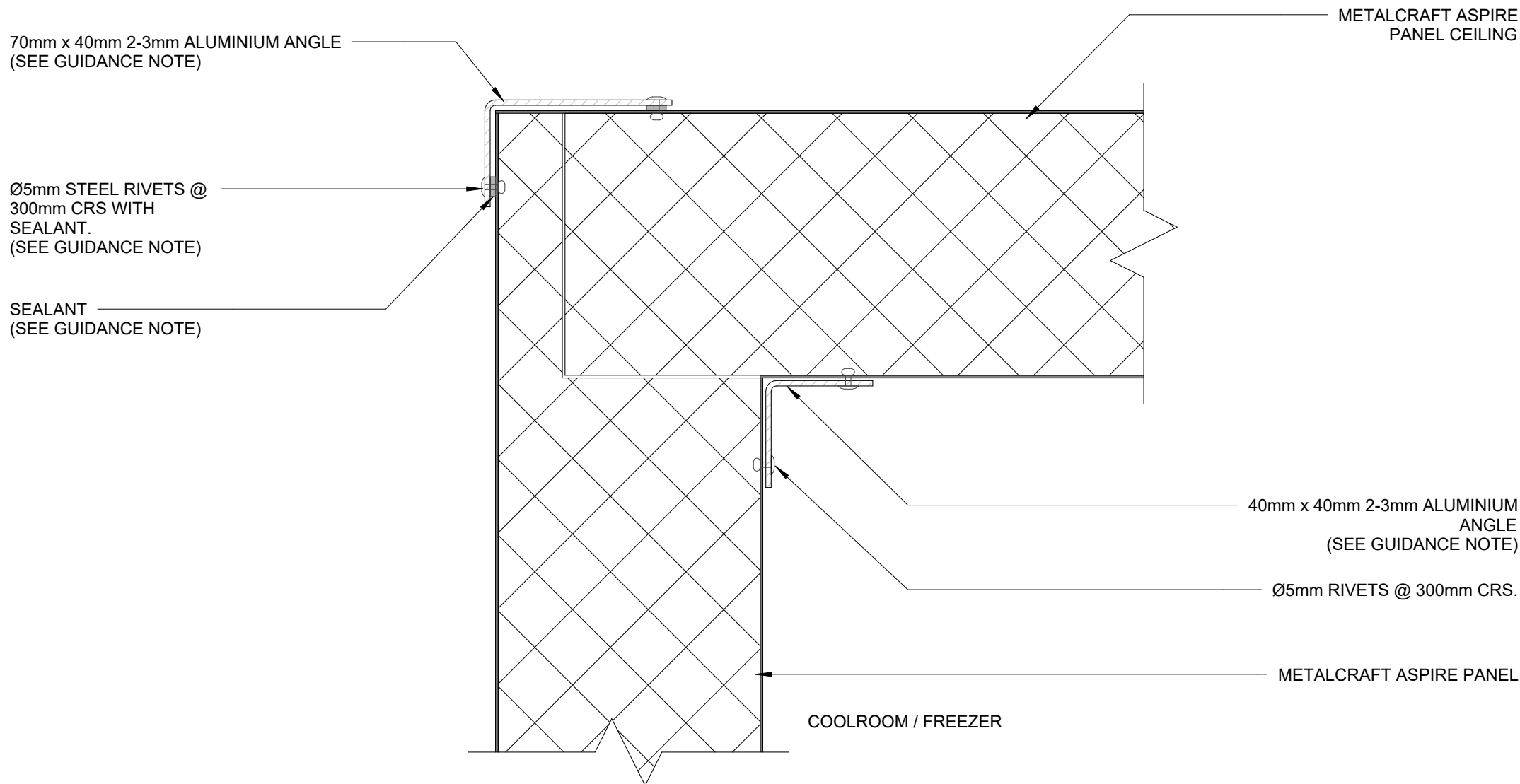
Reference ASEPS

Date 14.04.2025

Scale 1 : 2

Sheet

**13 / 23**



**GUIDANCE NOTES:**

1. WHEN SPECIFIC FIRE DESIGN IS REQUIRED FOR INSTALLATION OF PANELS STEEL FLASHINGS MUST BE USED.
2. FIRE RESISTANT SEALANT MUST BE USED WHEN SPECIFIC FIRE DESIGN IS REQUIRED.

**Metalcraft**  
Insulated Panels  
www.metalcraftgroup.co.nz

DISCLAIMER:  
All details are to be used for indicative purposes only and the designer should consult both the MRM code of practice and E2 and all other relevant building codes. Details of the supporting mechanisms are indicative only. These installation details must be read in conjunction with all other product literature available for download from [www.metalcraftinsulatedpanels.co.nz](http://www.metalcraftinsulatedpanels.co.nz)

**ROOF TO WALL COOLROOM / FREEZER 01**

Aspire panel

Rev. 1.0

**CONTROLLED ENVIRONMENT**

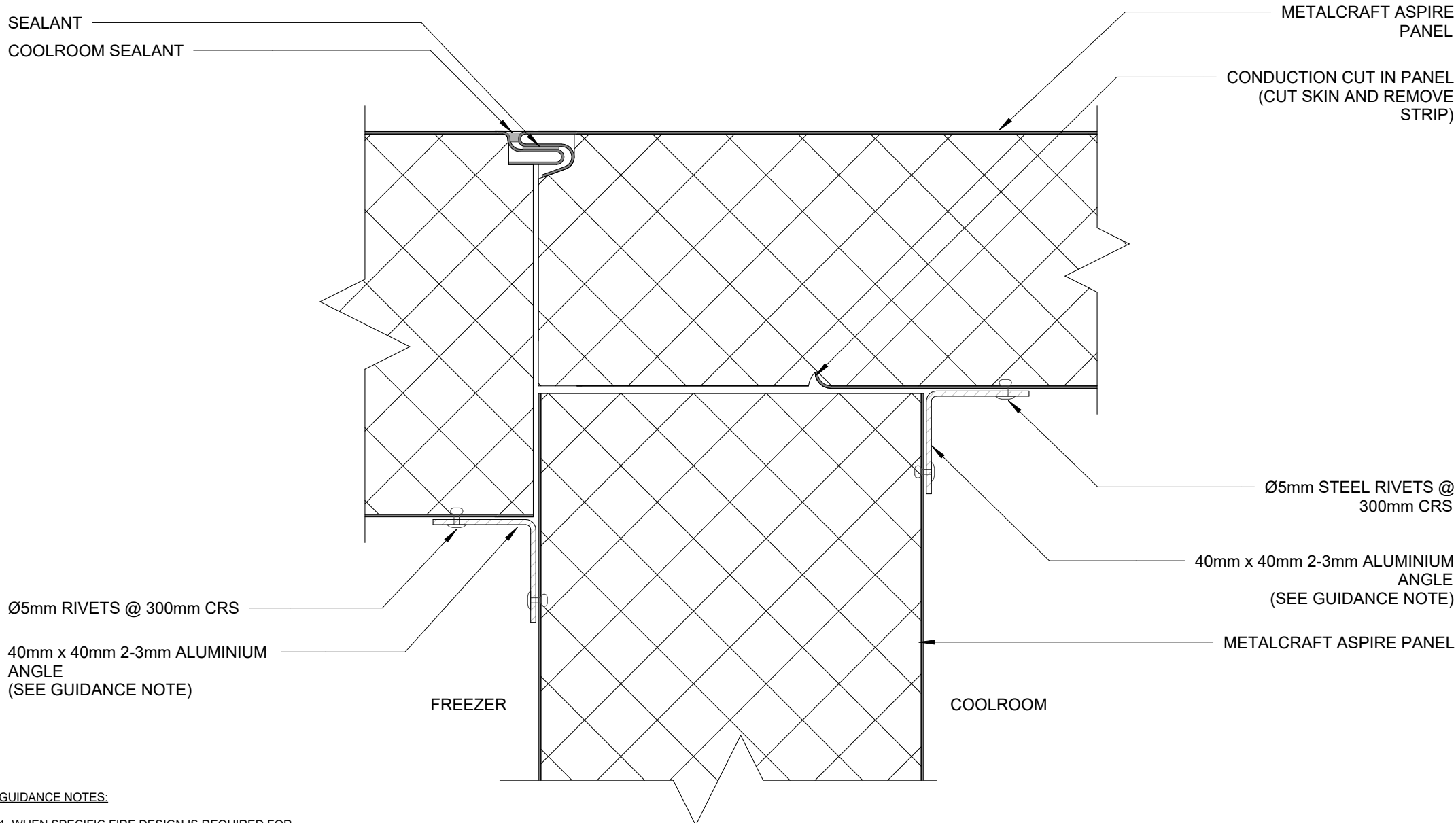
Reference ASEPS

Date 14.04.2025

Scale 1 : 2

Sheet

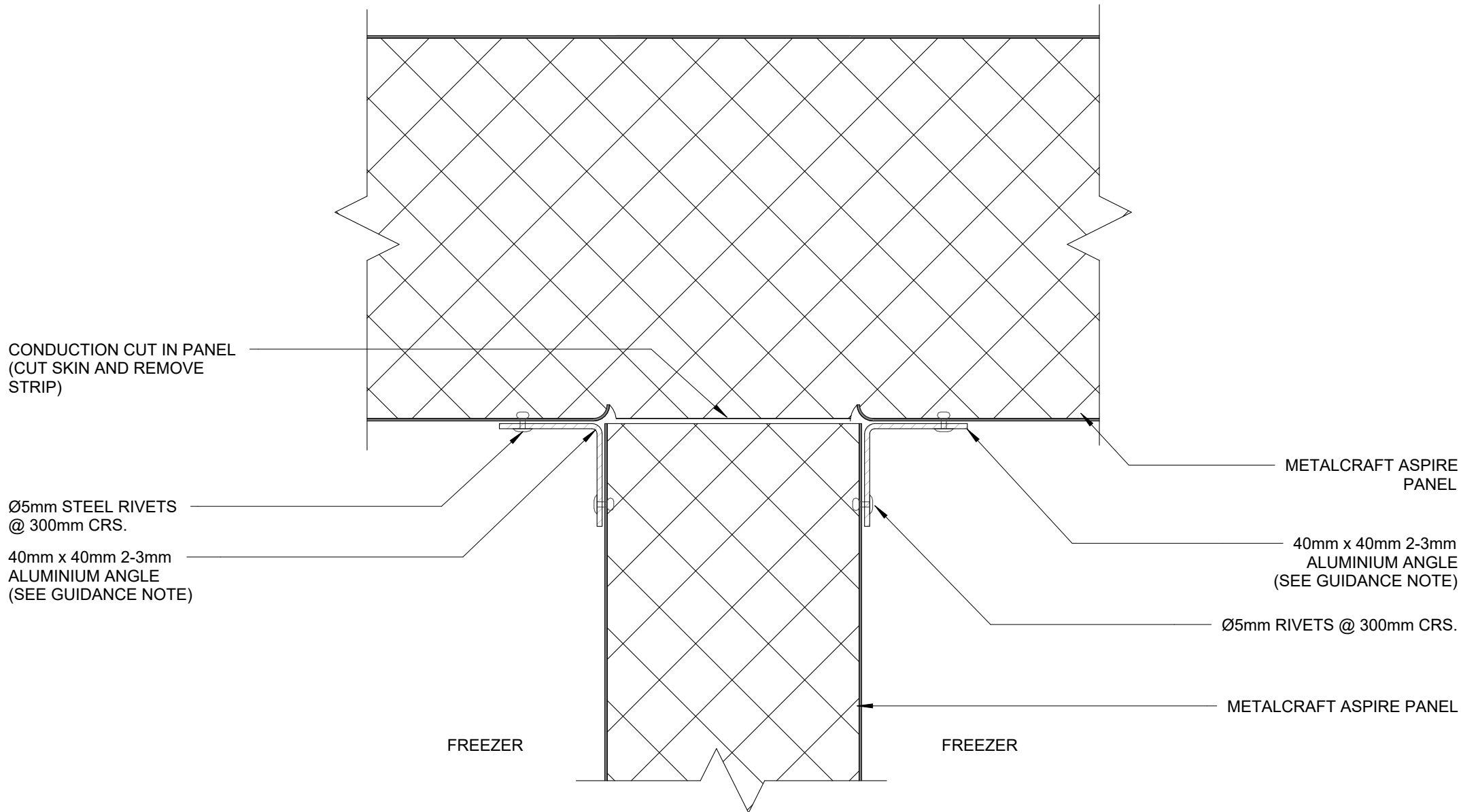
**14 / 23**



#### GUIDANCE NOTES:

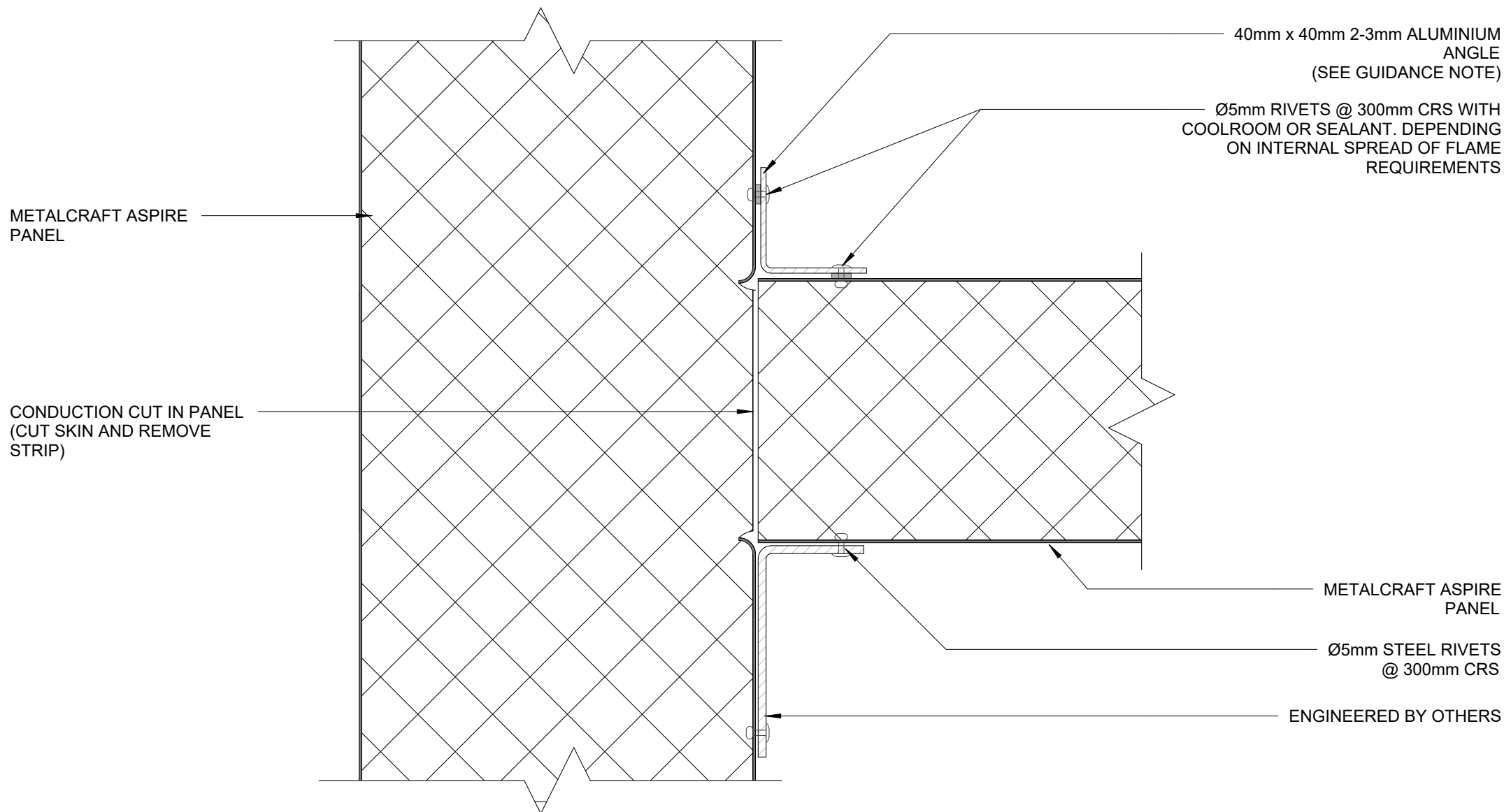
1. WHEN SPECIFIC FIRE DESIGN IS REQUIRED FOR INSTALLATION OF PANELS STEEL FLASHINGS MUST BE USED.
2. FIRE RESISTANT SEALANT MUST BE USED WHEN SPECIFIC FIRE DESIGN IS REQUIRED.





**GUIDANCE NOTES:**

1. WHEN SPECIFIC FIRE DESIGN IS REQUIRED FOR INSTALLATION OF PANELS STEEL FLASHINGS MUST BE USED.
2. FIRE RESISTANT SEALANT MUST BE USED WHEN SPECIFIC FIRE DESIGN IS REQUIRED.



**GUIDANCE NOTES:**

1. WHEN SPECIFIC FIRE DESIGN IS REQUIRED FOR  
INSTALLATION OF PANELS STEEL FLASHINGS MUST BE USED.

2. FIRE RESISTANT SEALANT MUST BE USED WHEN SPECIFIC  
FIRE DESIGN IS REQUIRED.

**Metalcraft**  
Insulated Panels  
www.metalcraftgroup.co.nz

DISCLAIMER:  
All details are to be used for indicative purposes only and the designer should consult both the MRM  
code of practice and E2 and all other relevant building codes. Details of the supporting mechanisms are  
indicative only. These installation details must be read in conjunction with all other product literature  
available for download from www.metalcraftinsulatedpanels.co.nz

**COOLROOM / FREEZER CEILING DETAIL 01**

Aspire panel

Rev. 1.0

**CONTROLLED ENVIRONMENT**

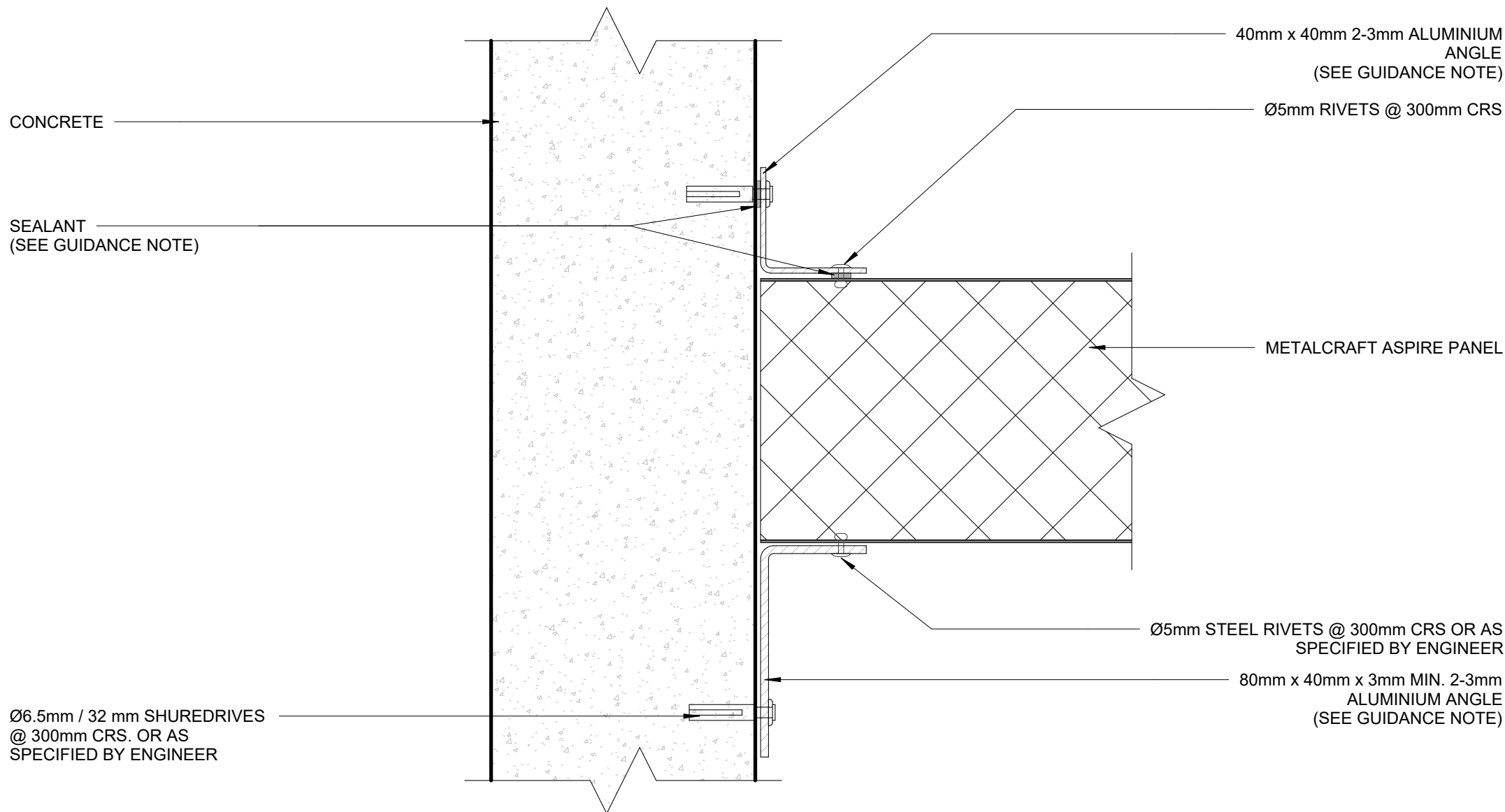
Reference ASEPS

Date 14.04.2025

Scale 1 : 2

Sheet

**17 / 23**



**GUIDANCE NOTES:**

1. WHEN SPECIFIC FIRE DESIGN IS REQUIRED FOR  
INSTALLATION OF PANELS STEEL FLASHINGS MUST BE USED.

2. FIRE RESISTANT SEALANT MUST BE USED WHEN SPECIFIC  
FIRE DESIGN IS REQUIRED.

SEALANT

COOLROOM SEALANT

OUTSIDE

INSIDE

METALCRAFT ASPIRE  
PANEL

**GUIDANCE NOTES:**

1. WHEN SPECIFIC FIRE DESIGN IS REQUIRED FOR  
INSTALLATION OF PANELS STEEL FLASHINGS MUST BE USED.

2. FIRE RESISTANT SEALANT MUST BE USED WHEN SPECIFIC  
FIRE DESIGN IS REQUIRED.

**Metalcraft**  
Insulated Panels  
[www.metalcraftgroup.co.nz](http://www.metalcraftgroup.co.nz)

DISCLAIMER:  
All details are to be used for indicative purposes only and the designer should consult both the MRM  
code of practice and E2 and all other relevant building codes. Details of the supporting mechanisms are  
indicative only. These installation details must be read in conjunction with all other product literature  
available for download from [www.metalcraftinsulatedpanels.co.nz](http://www.metalcraftinsulatedpanels.co.nz)

**TYPICAL WALL JOINT FREEZER / COOLROOM 01**

Aspire panel

Rev. 1.0

**CONTROLLED ENVIRONMENT**

Reference ASEPS

Date 14.04.2025

Scale 1 : 2

Sheet

**19 / 23**

70mm x 40mm 2-3mm ALUMINIUM ANGLE  
(SEE GUIDANCE NOTE)

METALCRAFT ASPIRE  
PANEL CEILING

Ø5mm STEEL RIVETS @  
300mm CRS WITH  
SEALANT.

SEALANT  
(SEE GUIDANCE NOTE)

40mm x 40mm 2-3mm  
ALUMINIUM ANGLE  
(SEE GUIDANCE NOTE)

Ø5mm RIVETS @ 300mm CRS.

METALCRAFT ASPIRE PANEL

COOLROOM

**GUIDANCE NOTES:**

1. WHEN SPECIFIC FIRE DESIGN IS REQUIRED FOR  
INSTALLATION OF PANELS STEEL FLASHINGS MUST BE USED.

2. FIRE RESISTANT SEALANT MUST BE USED WHEN SPECIFIC  
FIRE DESIGN IS REQUIRED.

**DISCLAIMER:**  
All details are to be used for indicative purposes only and the designer should consult both the MRM  
code of practice and E2 and all other relevant building codes. Details of the supporting mechanisms are  
indicative only. These installation details must be read in conjunction with all other product literature  
available for download from [www.metalcraftinsulatedpanels.co.nz](http://www.metalcraftinsulatedpanels.co.nz)

**Metalcraft**  
Insulated Panels  
[www.metalcraftgroup.co.nz](http://www.metalcraftgroup.co.nz)

**CLEAN ROOM ROOF TO WALL**

**CONTROLLED ENVIRONMENT**

Aspire panel

Rev. 1.0

Reference ASEPS

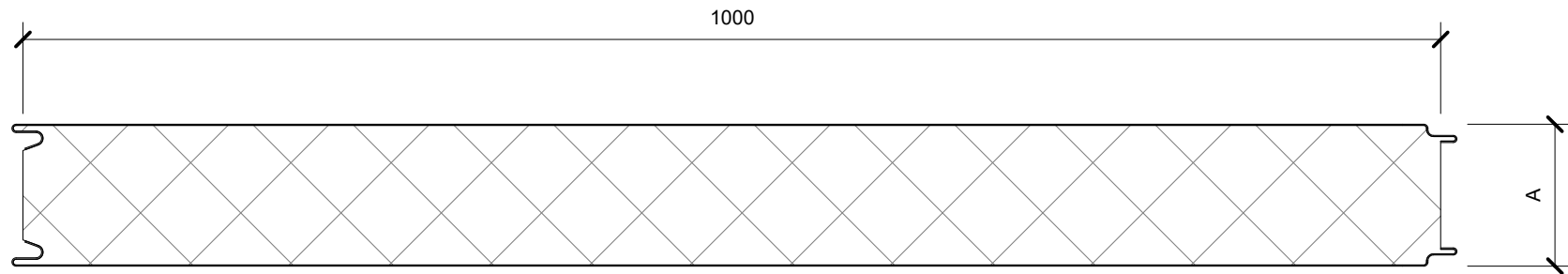
Date 14.04.2025

Scale 1 : 2

Sheet

**20 / 23**

## ASPIRE PANEL



FLAT FINISH - AVAILABLE BOTH SIDES

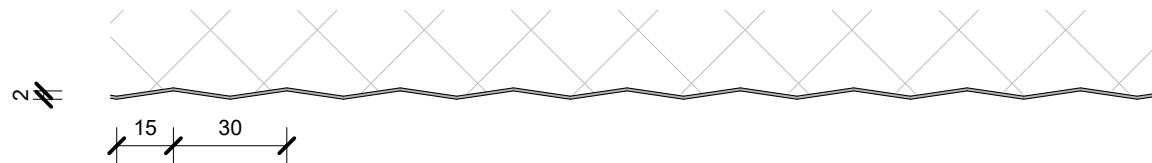
SCALE @ 1:5

A= 50, 75, 100, 125,  
150mm

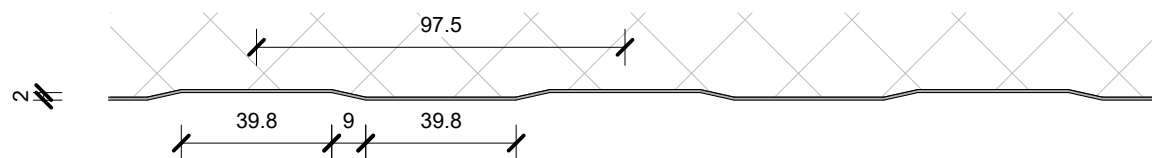
### INTERNAL LINER FINISHES

SCALE @ 1:2

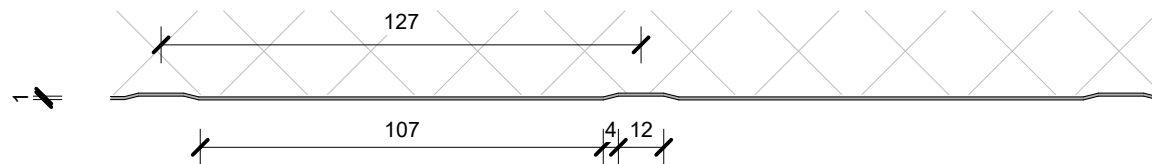
SILKLINE FINISH  
- ONE SIDE ONLY



MESA FINISH  
- ONE SIDE ONLY



RIBBED FINISH  
- AVAILABLE BOTH SIDES



METALCRAFT ASPIRE  
PANEL 100mm FOR COOL  
ROOM

SEALANT

73 AS 6.5 RIVETS @ 300mm CRS

40 x 40 x 1.6 ALI ANGLE ON SEALANT  
BEAD

COVER FLASHING

SEALANT BEAD UNDERNEATH ANGLE

METAL PIN ANCHOR Ø 6.5 @ 300 CRS

**GUIDANCE NOTES:**

1. WHEN SPECIFIC FIRE DESIGN IS REQUIRED FOR  
INSTALLATION OF PANELS STEEL FLASHINGS MUST BE USED.

2. FIRE RESISTANT SEALANT MUST BE USED WHEN SPECIFIC  
FIRE DESIGN IS REQUIRED.

**Metalcraft**  
Insulated Panels  
[www.metalcraftgroup.co.nz](http://www.metalcraftgroup.co.nz)

DISCLAIMER:  
All details are to be used for indicative purposes only and the designer should consult both the MRM  
code of practice and E2 and all other relevant building codes. Details of the supporting mechanisms are  
indicative only. These installation details must be read in conjunction with all other product literature  
available for download from [www.metalcraftinsulatedpanels.co.nz](http://www.metalcraftinsulatedpanels.co.nz)

Aspire panel

Rev. 1.0

Reference ASEPS

Date 14.04.2025

COOL ROOM BASE DETAIL 01

CONTROLLED ENVIRONMENT

Scale 1 : 2

Sheet

**22 / 23**

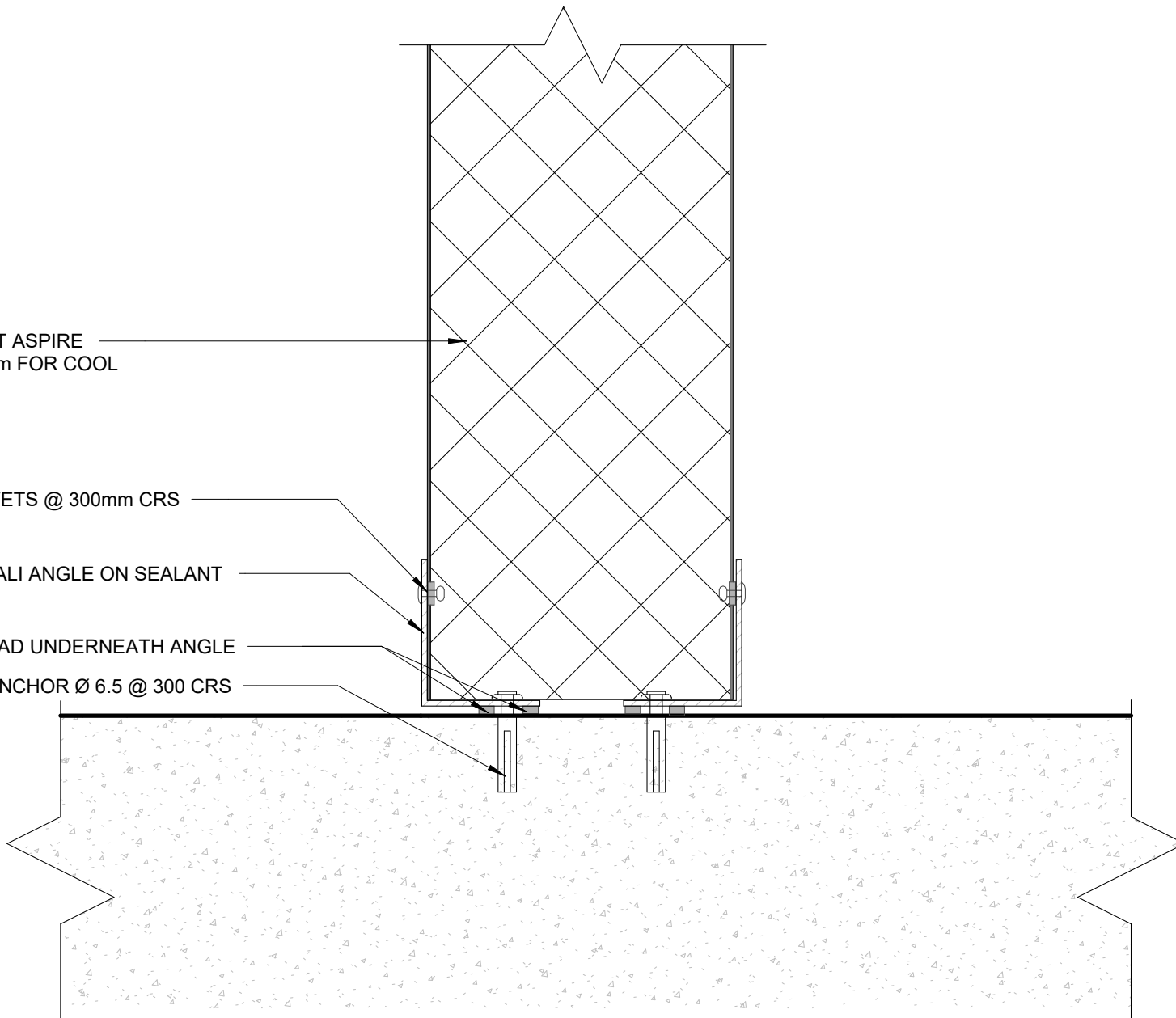
METALCRAFT ASPIRE  
PANEL 100mm FOR COOL  
ROOM

73 AS 6.5 RIVETS @ 300mm CRS

40 x 40 x 1.6 ALI ANGLE ON SEALANT  
BEAD

SEALANT BEAD UNDERNEATH ANGLE

METAL PIN ANCHOR Ø 6.5 @ 300 CRS



**GUIDANCE NOTES:**

1. WHEN SPECIFIC FIRE DESIGN IS REQUIRED FOR  
INSTALLATION OF PANELS STEEL FLASHINGS MUST BE USED.

2. FIRE RESISTANT SEALANT MUST BE USED WHEN SPECIFIC  
FIRE DESIGN IS REQUIRED.