

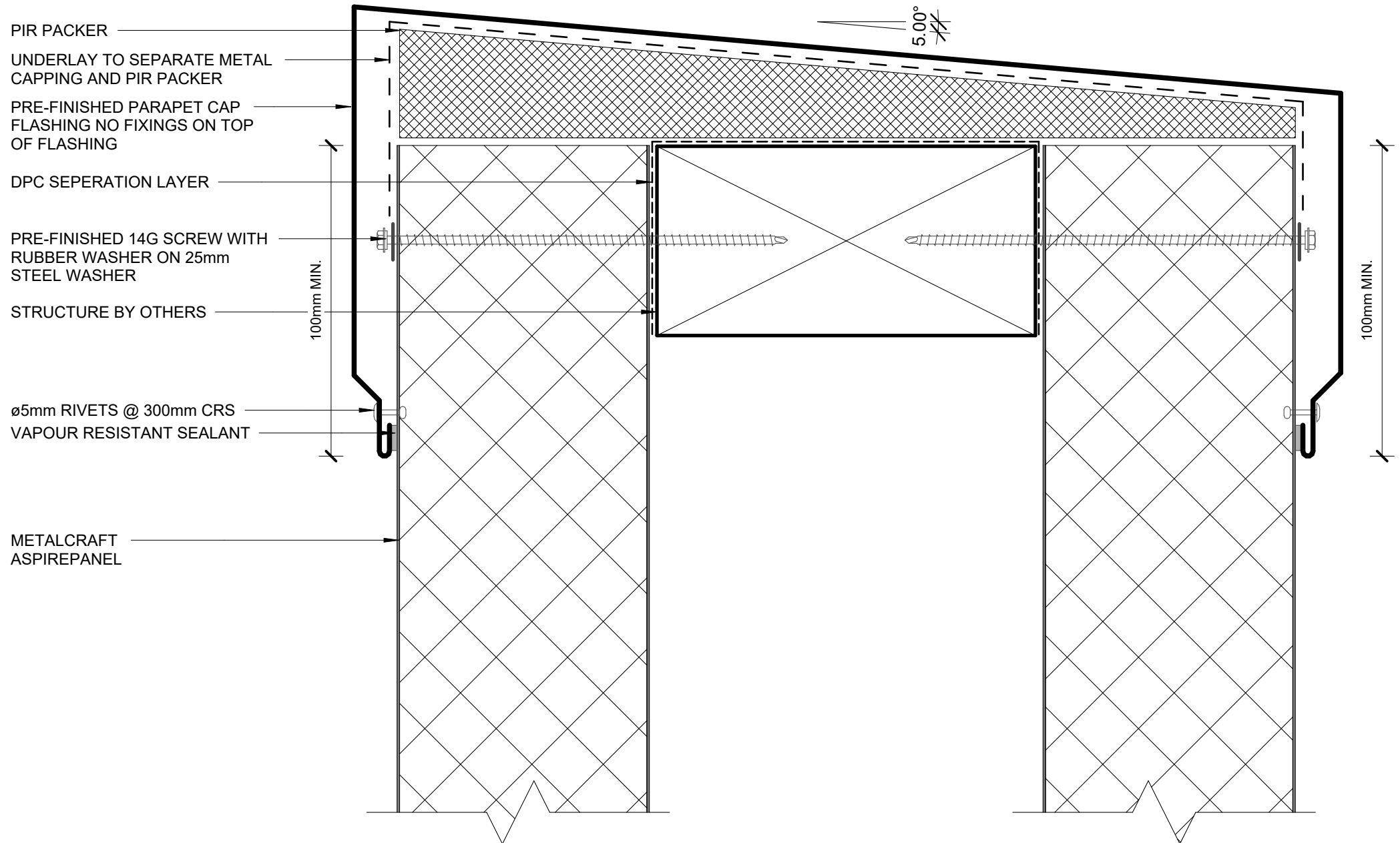
Aspire panel

EXTERNAL WALL DETAILS VERTICALLY LAID

<u>DETAIL LIST</u>		<u>Revision</u>	<u>Date</u>
00 / 20	COVER SHEET		
01 / 20	PARAPET	1.1	14.04.2025
02 / 20	WINDOW HEAD	1.1	14.04.2025
03 / 20	WINDOW SILL AND JAMB	1.1	14.04.2025
04 / 20	VERTICAL JOINT TYPE C	1.1	14.04.2025
05 / 20	PIPE PENETRATION w DEKTITE FLASHING	1.1	14.04.2025
06 / 20	PIPE PENETRATION w PVC FLANGE	1.1	14.04.2025
07 / 20	MIDFLOOR JOINT	1.1	14.04.2025
08 / 20	FIXING JOINT 01	1.1	14.04.2025
09 / 20	SECRET FIXING JOINT 02	1.1	14.04.2025
10 / 20	METERBOX JAMB HEAD AND SILL DETAIL	1.1	14.04.2025
11 / 20	INTERNAL/EXTERNAL CORNER DETAIL	1.1	14.04.2025
12 / 20	ALTERNATIVE INTERNAL CORNER	1.1	14.04.2025
13 / 20	ALTERNATIVE EXTERNAL CORNER	1.1	14.04.2025
14 / 20	ABUTMENT 01	1.1	14.04.2025
15 / 20	ABUTMENT 02	1.1	14.04.2025
16 / 20	BOTTOM OF CLADDING 01	1.1	14.04.2025
17 / 20	BOTTOM OF CLADDING 02	1.1	14.04.2025
18 / 20	BOTTOM OF CLADDING 03	1.1	14.04.2025
19 / 20	BOTTOM OF CLADDING 04	1.1	14.04.2025
20 / 20	PANEL PROFILE AND SIZE	1.2	14.04.2025

EXTERNAL

INTERNAL



METALCRAFT
ASPIREPANEL

Ø5mm RIVETS @ 300mm CRS

AIRSEAL ON BACKING ROD TO RUN
CONTINUOUSLY AROUND HEAD, SILL
AND JAMB

TEMPORARY PACKER IF REQUIRED,
REMOVED AFTER FIXING

WINDOW HEAD LINER

LINE OF WINDOW JAMB
LINER BEHIND

PRE-FINISHED WINDOW HEAD
FLASHING WITH 15° FALL

SILICON SEALANT

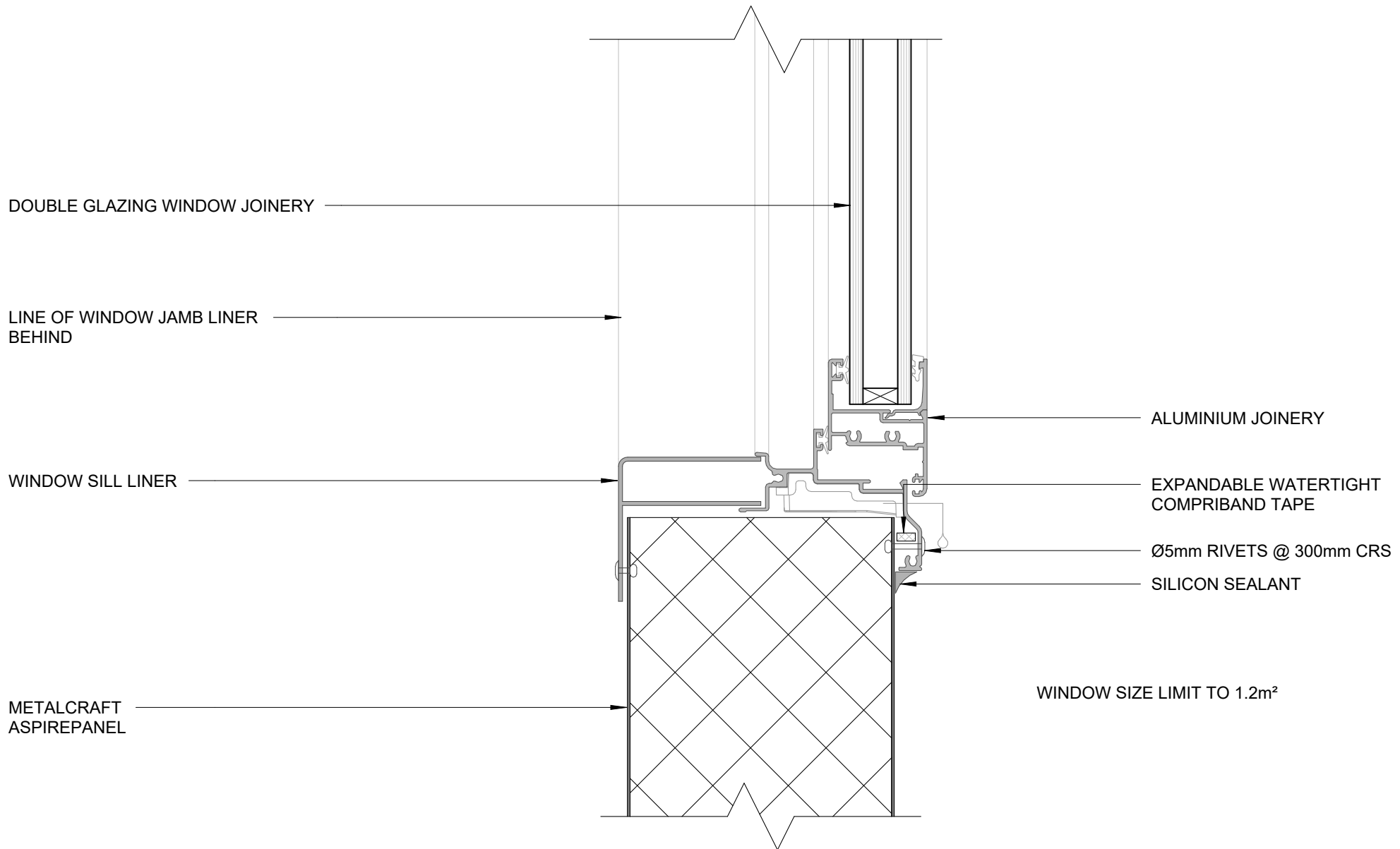
SILICON SEALANT

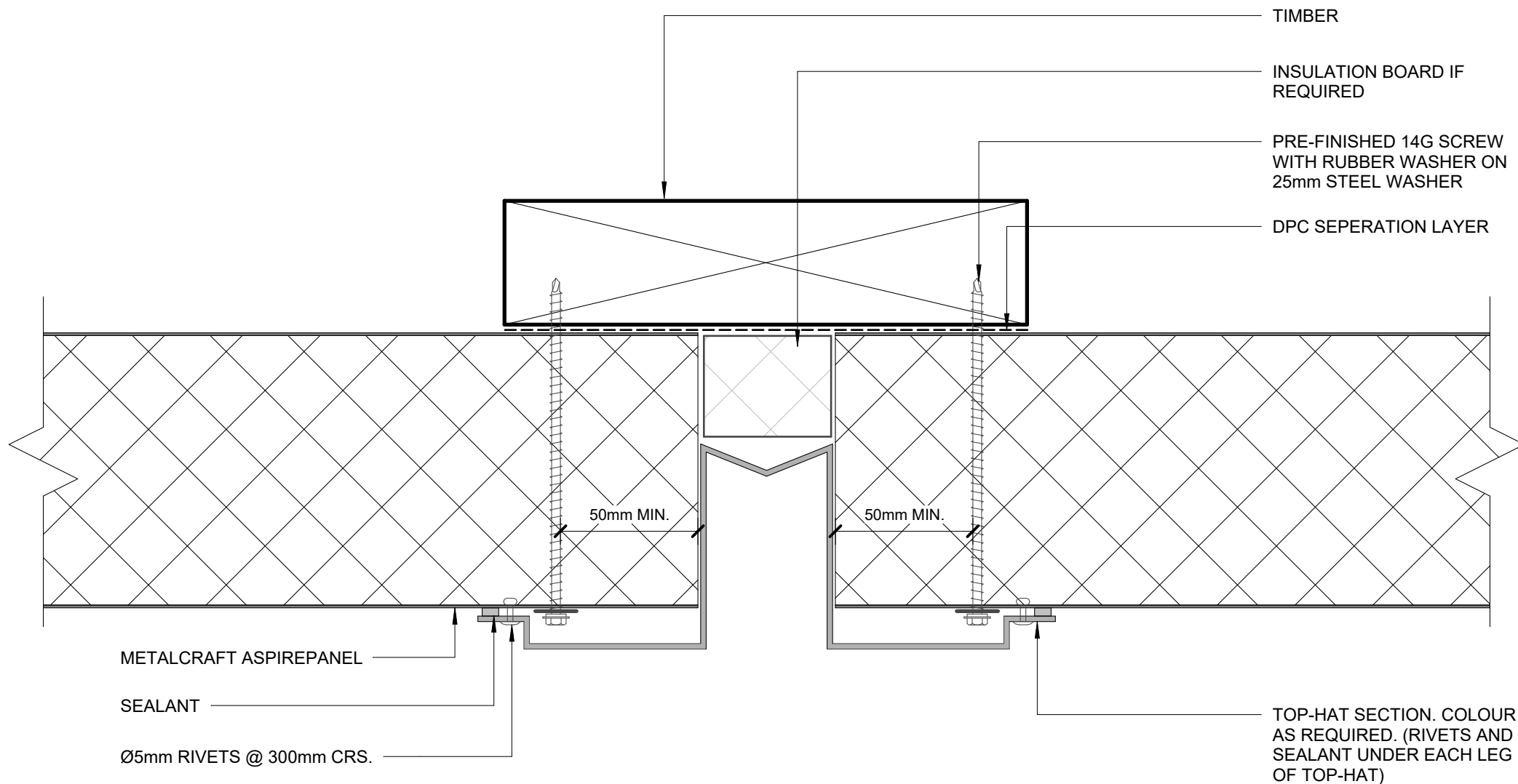
EXPANDALBE WATERTIGHT
COMPRIBAND TAPE

ALUMINIUM JOINERY

DOUBLE GLAZING WINDOW JOINERY

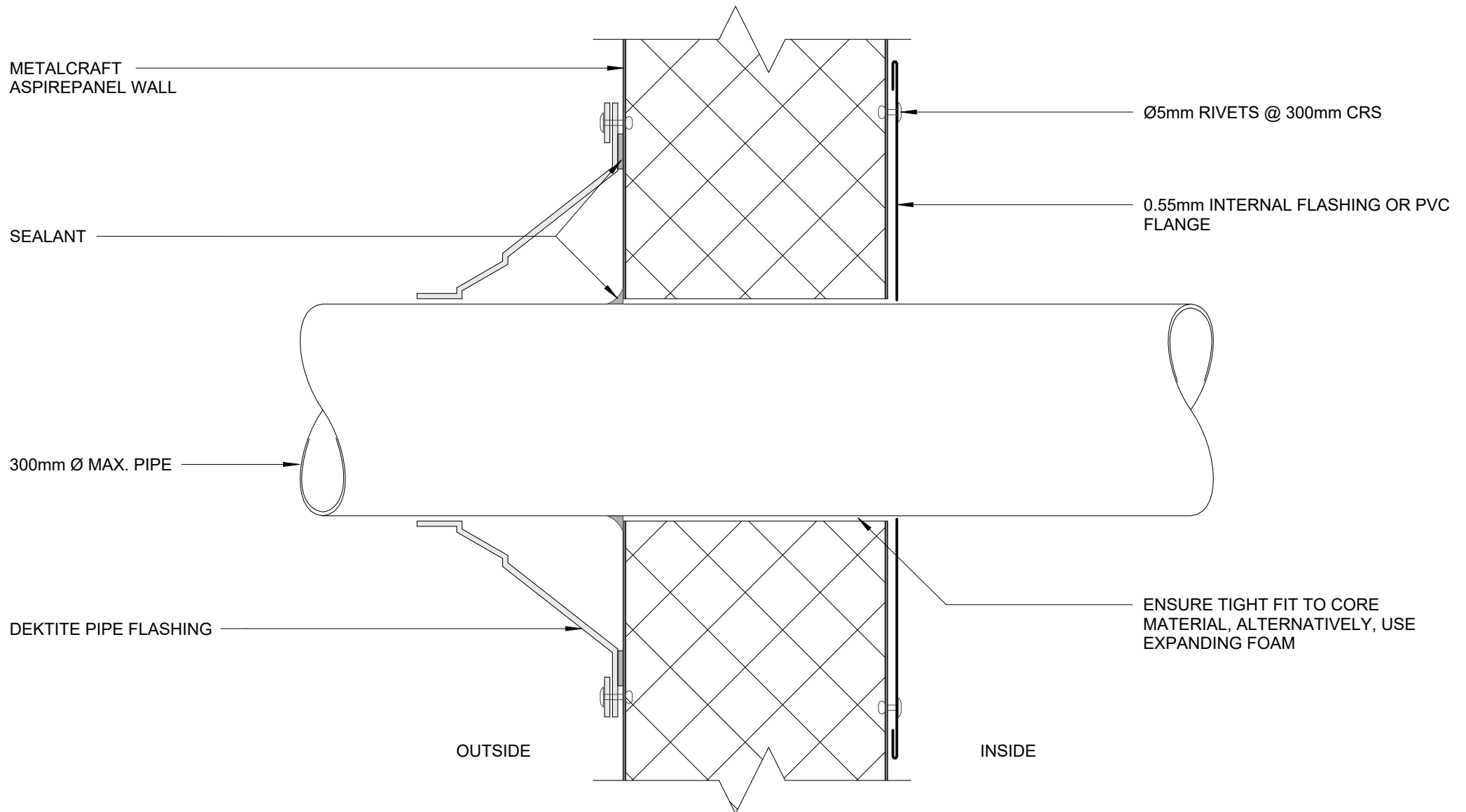
WINDOW SIZE LIMIT TO 1.2m²

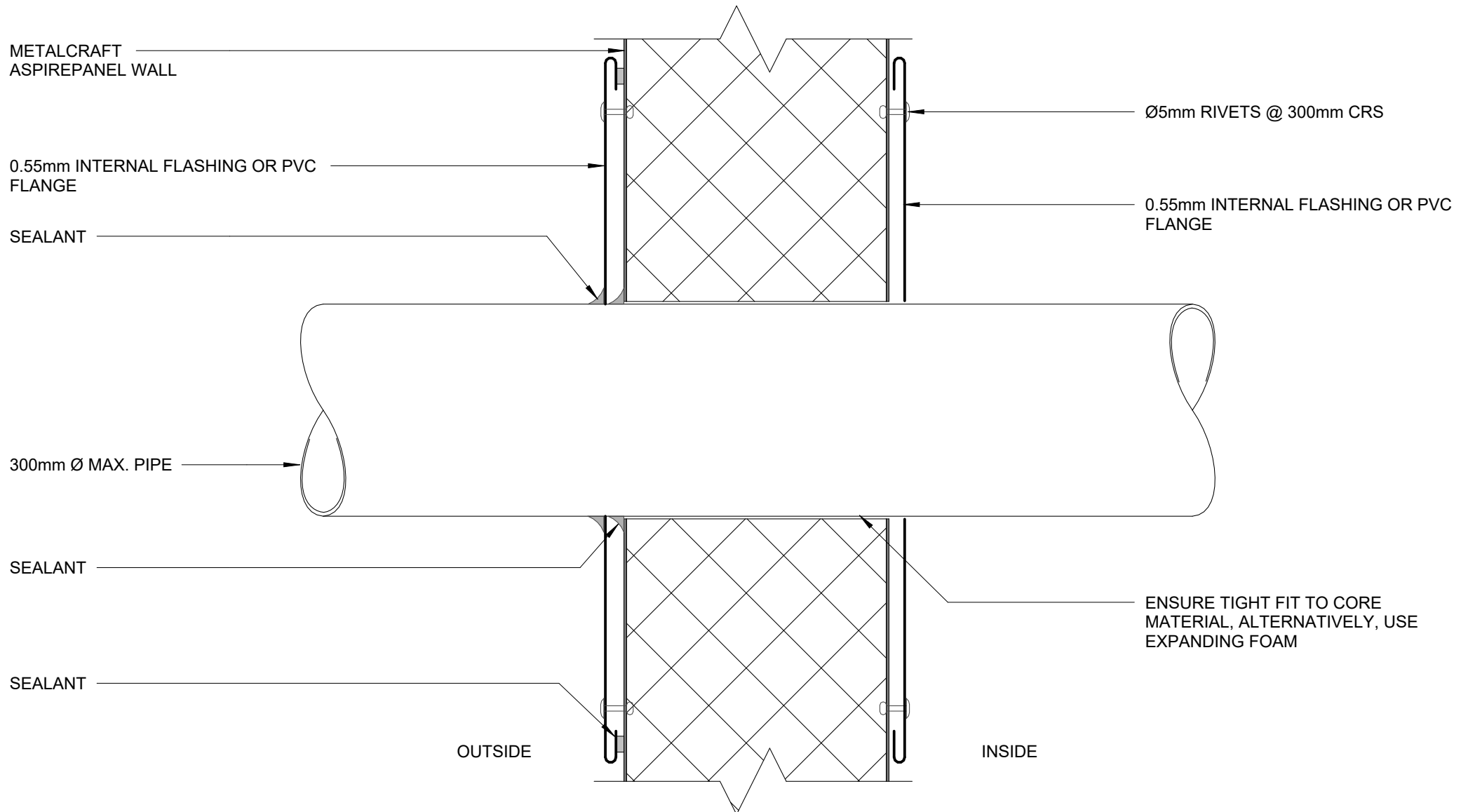




VERTICAL JOINT TYPE C

EXTERNAL WALL DETAILS





PIPE PENETRATION w PVC FLANGE

Aspire panel

Rev. 1.1

EXTERNAL WALL DETAILS

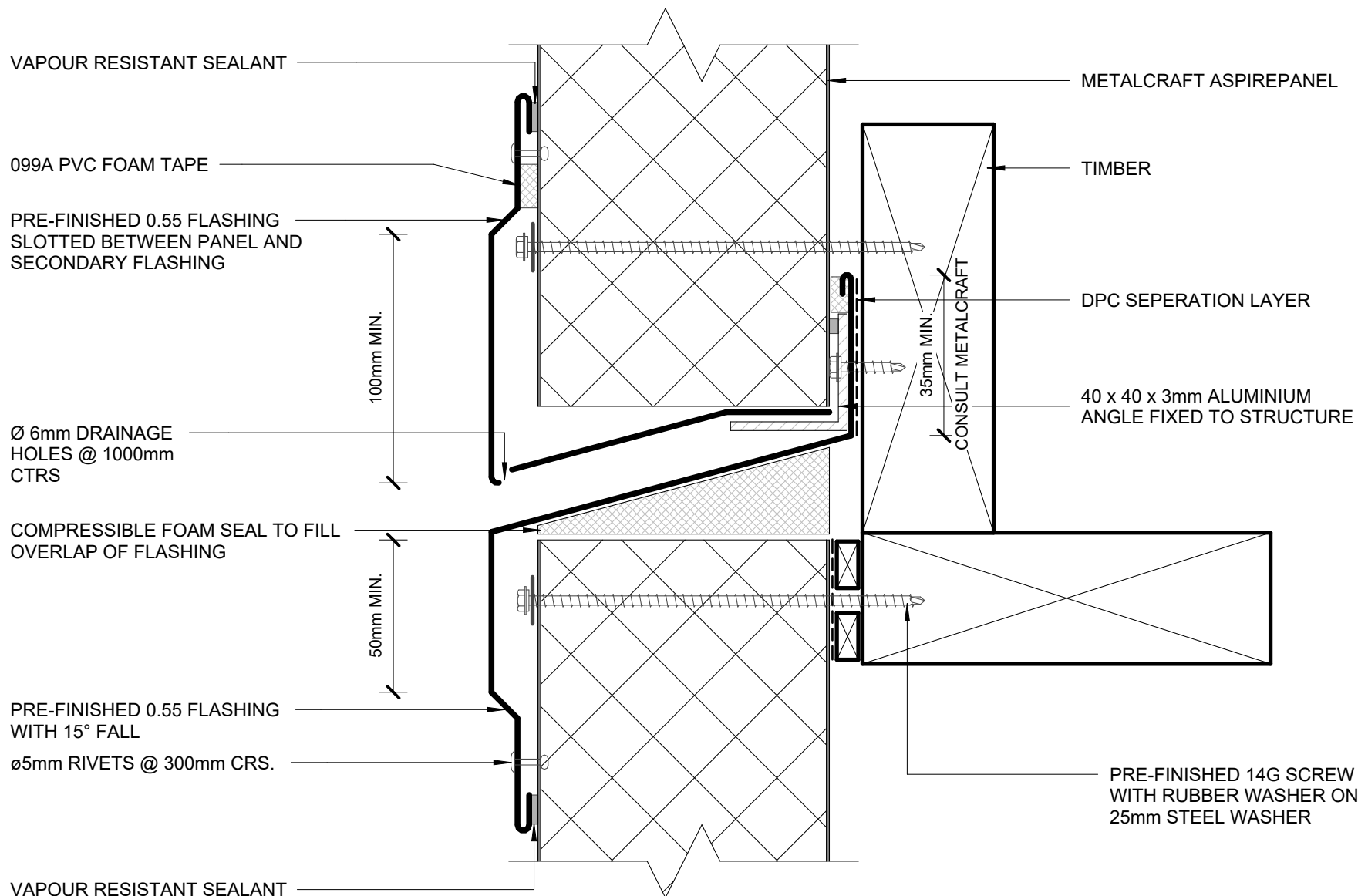
Reference ASPWD

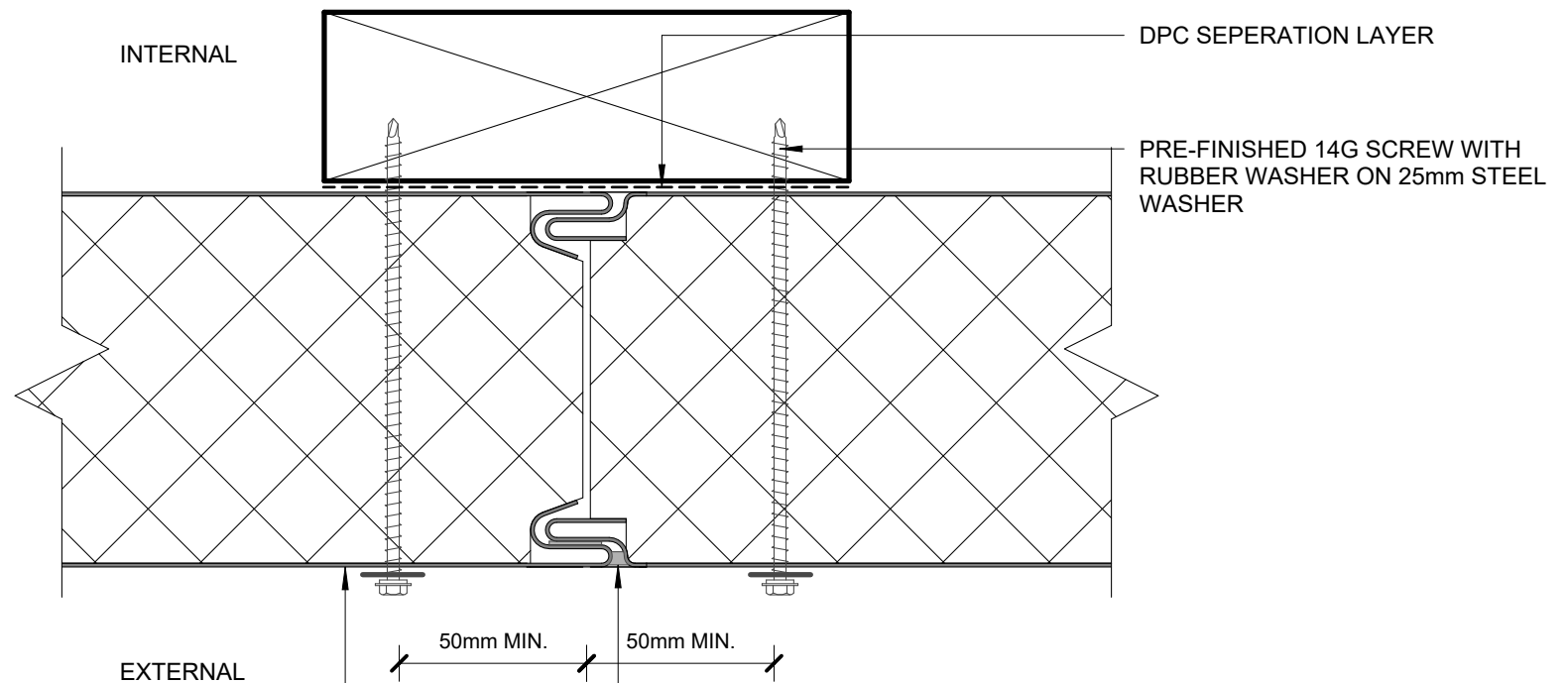
Date 14.04.2025

Scale 1 : 2

Sheet

06 / 20





METALCRAFT
ASPIREPANEL WALL

VAPOUR RESISTANT SEALANT

PRE-FINISHED SELF DRILLING/TAPPING
SCREW WITH RUBBER WASHER

TIMBER

INTERNAL

5mm
ALUMINIUM
ANGLE CLEAT

ø5mm RIVETS

METALCRAFT
ASPIREPANEL

EXTERNAL

ALUMINIUM BASE
CAP 300mm LONG
MIN

VAPOUR RESISTANT
SEALANT

DISCLAIMER:
All details are to be used for indicative purposes only and the designer should consult both the MRM
code of practice and E2 and all other relevant building codes. Details of the supporting mechanisms are
indicative only. These installation details must be read in conjunction with all other product literature
available for download from www.metalcraftinsulatedpanels.co.nz

SECRET FIXING JOINT 02

EXTERNAL WALL DETAILS

Aspire panel

Rev. 1.1

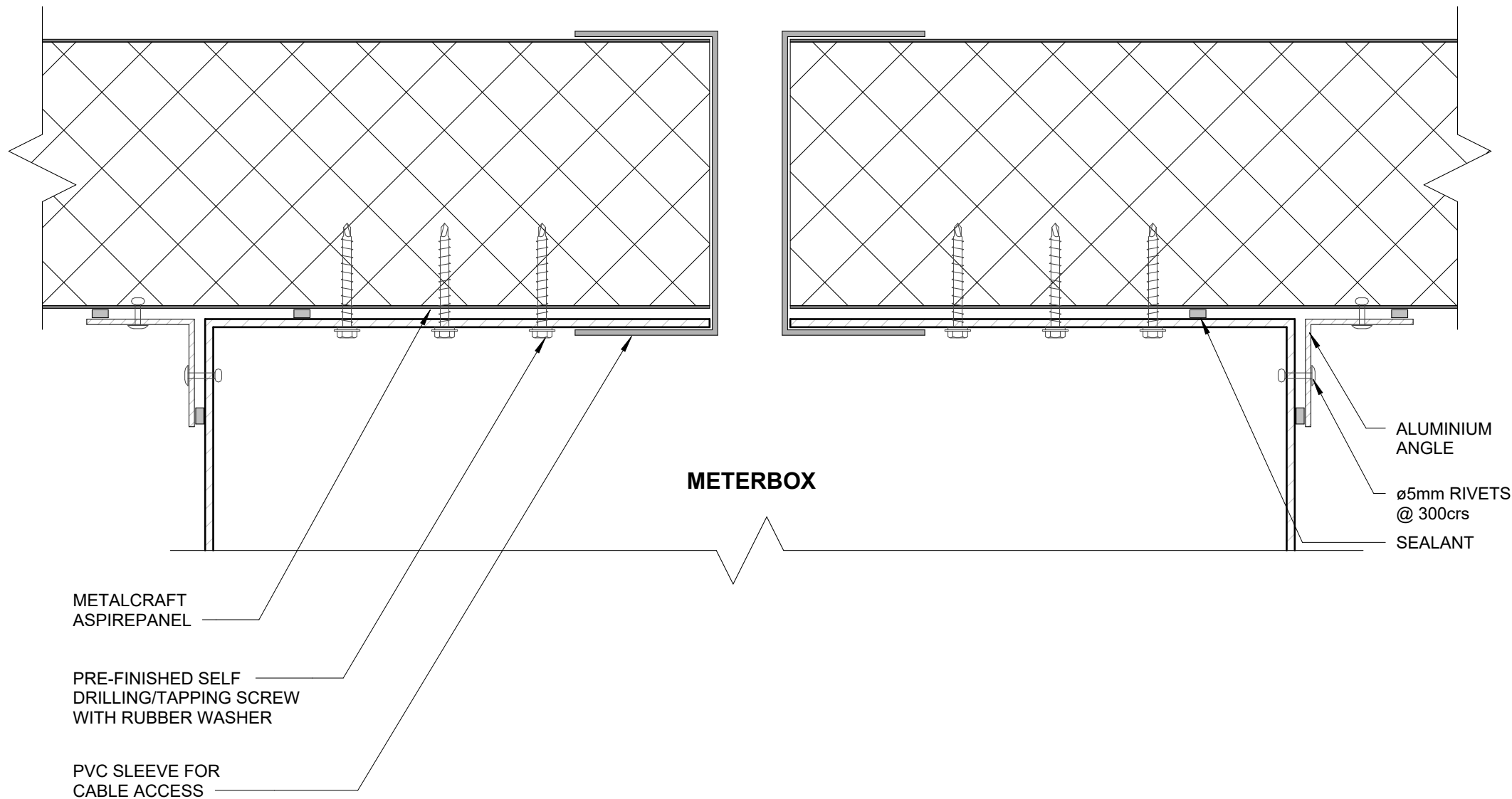
Reference ASPWD

Date 14.04.2025

Scale 1 : 2

Sheet

09 / 20



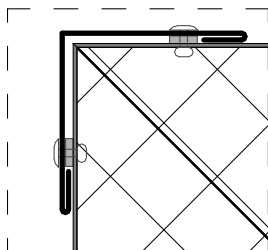
Ø5mm RIVETS @ 300mm CRS

40mm x 40mm x 2mm FOLDED ALUMINIUM
EXTERNAL ANGLE OR 0.55 SECONDARY
FLASHING (SEE ALTERNATIVE)

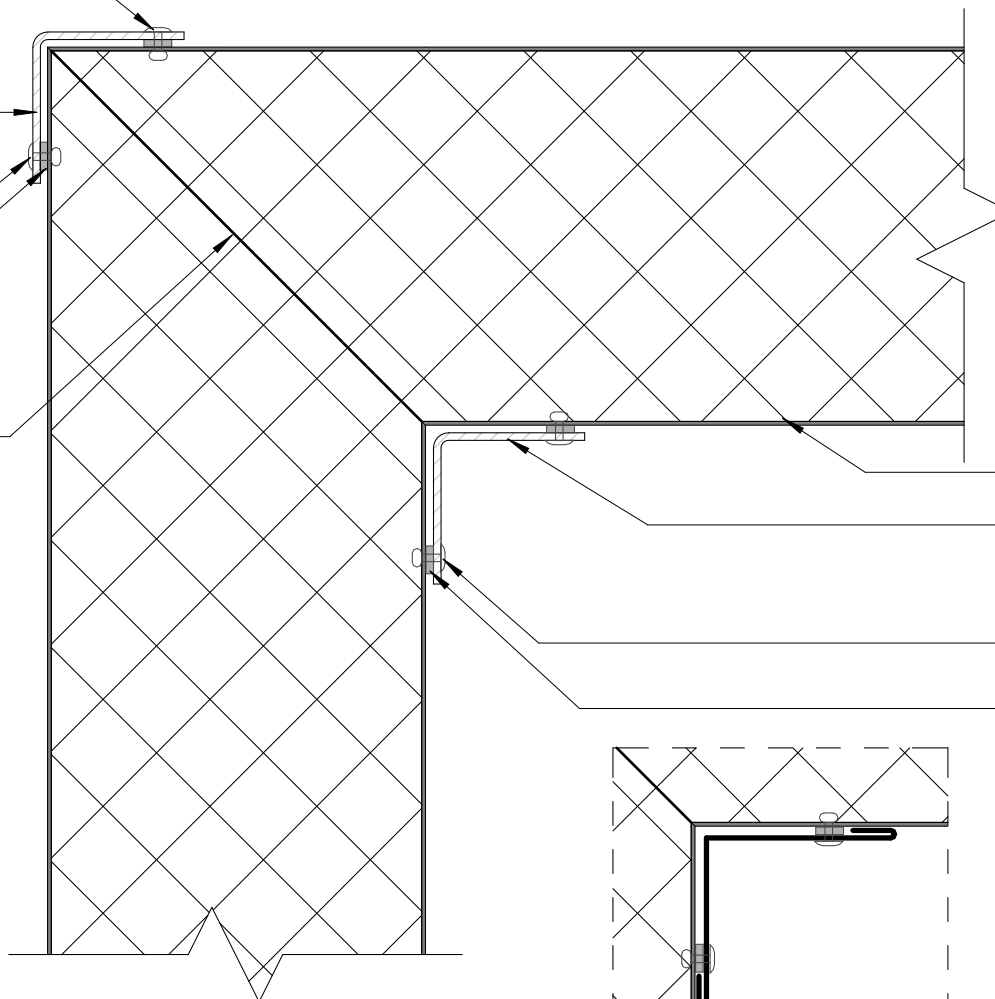
Ø5mm RIVETS @ 300mm CRS.
WITH SEALANT

SEALANT ON EXTERNAL
FACE ONLY

ASPIREPANEL MITRED CORNER



0.55 SECONDARY FLASHING (ALTERNATIVE)

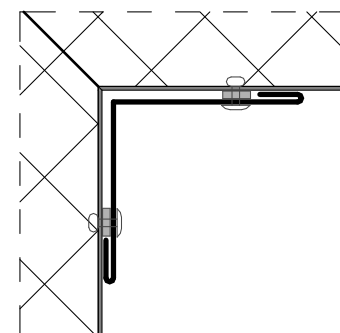


METALCRAFT ASPIREPANEL

40mm x 40mm x 2mm FOLDED
ALUMINIUM INTERNAL ANGLE OR
0.55 SECONDARY FLASHING
(SEE ALTERNATIVE)

Ø5mm RIVETS @ 300mm CRS.

SEALANT ON EXTERNAL FACE ONLY



0.55 SECONDARY FLASHING (ALTERNATIVE)

NOTE:
ALUMINIUM ANGLES CAN BE
REPLACED WITH STEEL

DISCLAIMER:
All details are to be used for indicative purposes only and the designer should consult both the MRM
code of practice and E2 and all other relevant building codes. Details of the supporting mechanisms are
indicative only. These installation details must be read in conjunction with all other product literature
available for download from www.metalcraftinsulatedpanels.co.nz

Metalcraft
Insulated Panels
www.metalcraftinsulatedpanels.co.nz

INTERNAL/EXTERNAL CORNER DETAIL

Aspire panel

Rev. 1.1

EXTERNAL WALL DETAILS

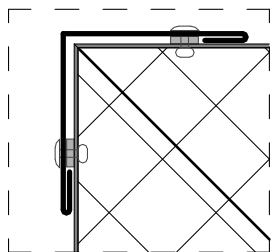
Reference ASPWD

Date 14.04.2025

Scale 1 : 2

Sheet

11 / 20



0.55 SECONDARY
FLASHING (ALTERNATIVE)

Ø5mm RIVETS @ 300mm CRS

DPC SEPERATION LAYER

0.55 SECONDARY FLASHING OR
ALUMINIUM INTERNAL ANGLE

ASPIREPANEL MITRED CORNER

METALCRAFT ASPIREPANEL

DPC SEPERATION LAYER

TIMBER

PRE-FINISHED 14G SCREW
WITH RUBBER WASHER
ON 25mm STEEL WASHER

VAPOUR RESISTANT
SEALANT ON
EXTERNAL FACE ONLY

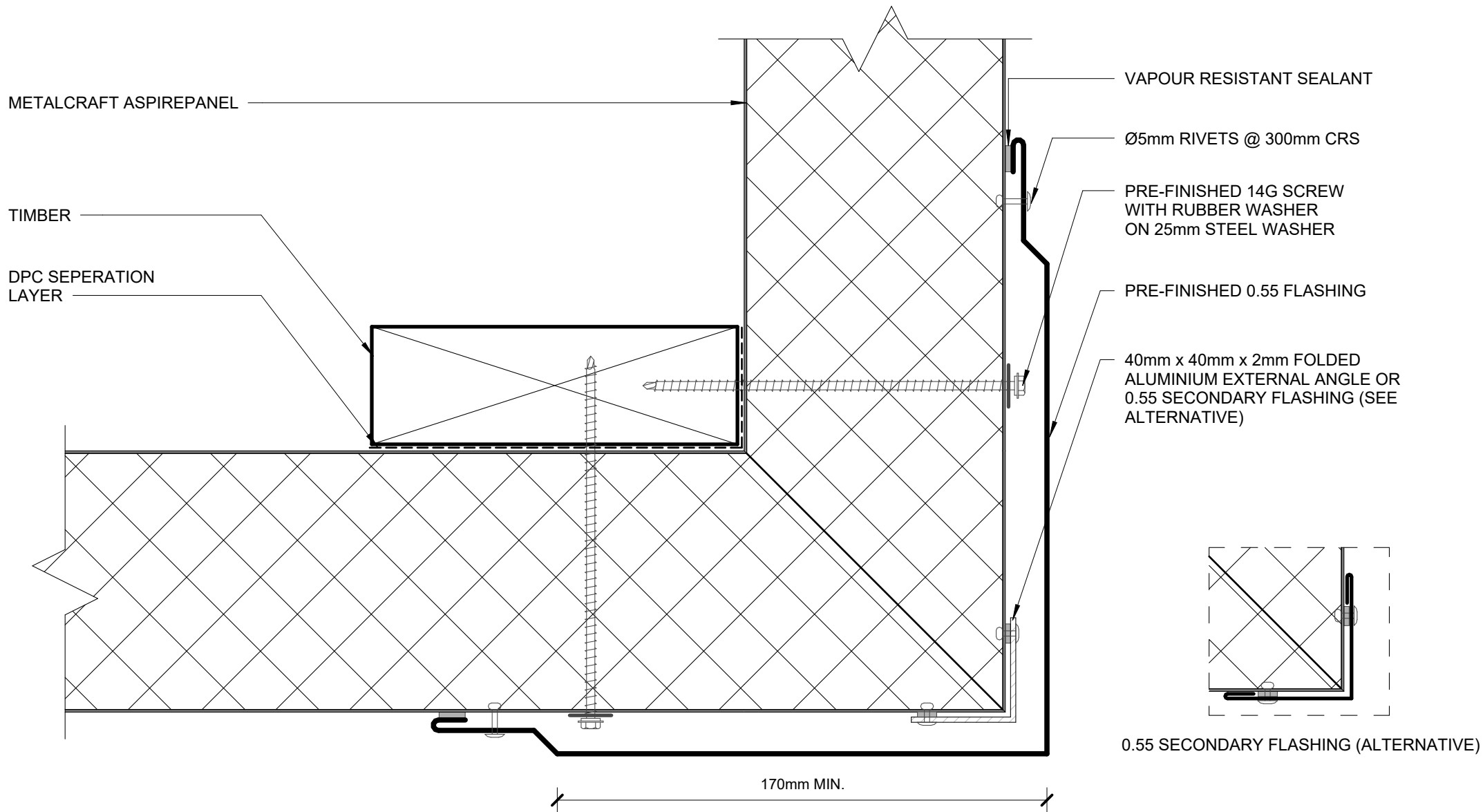
Ø5mm RIVETS @
300mm CRS.

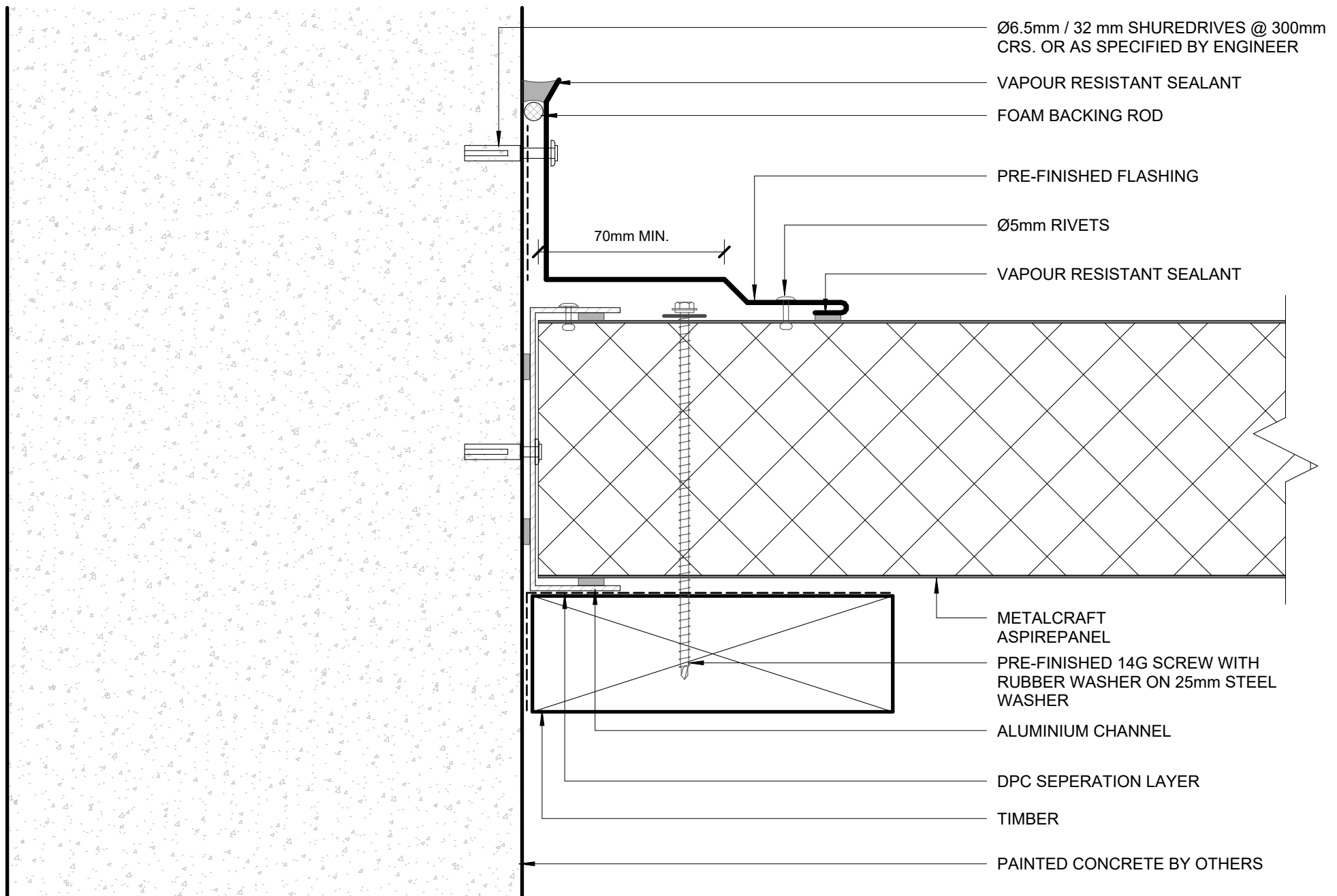
Ø40mm WASHER AND
M10 ZP HEX NUT

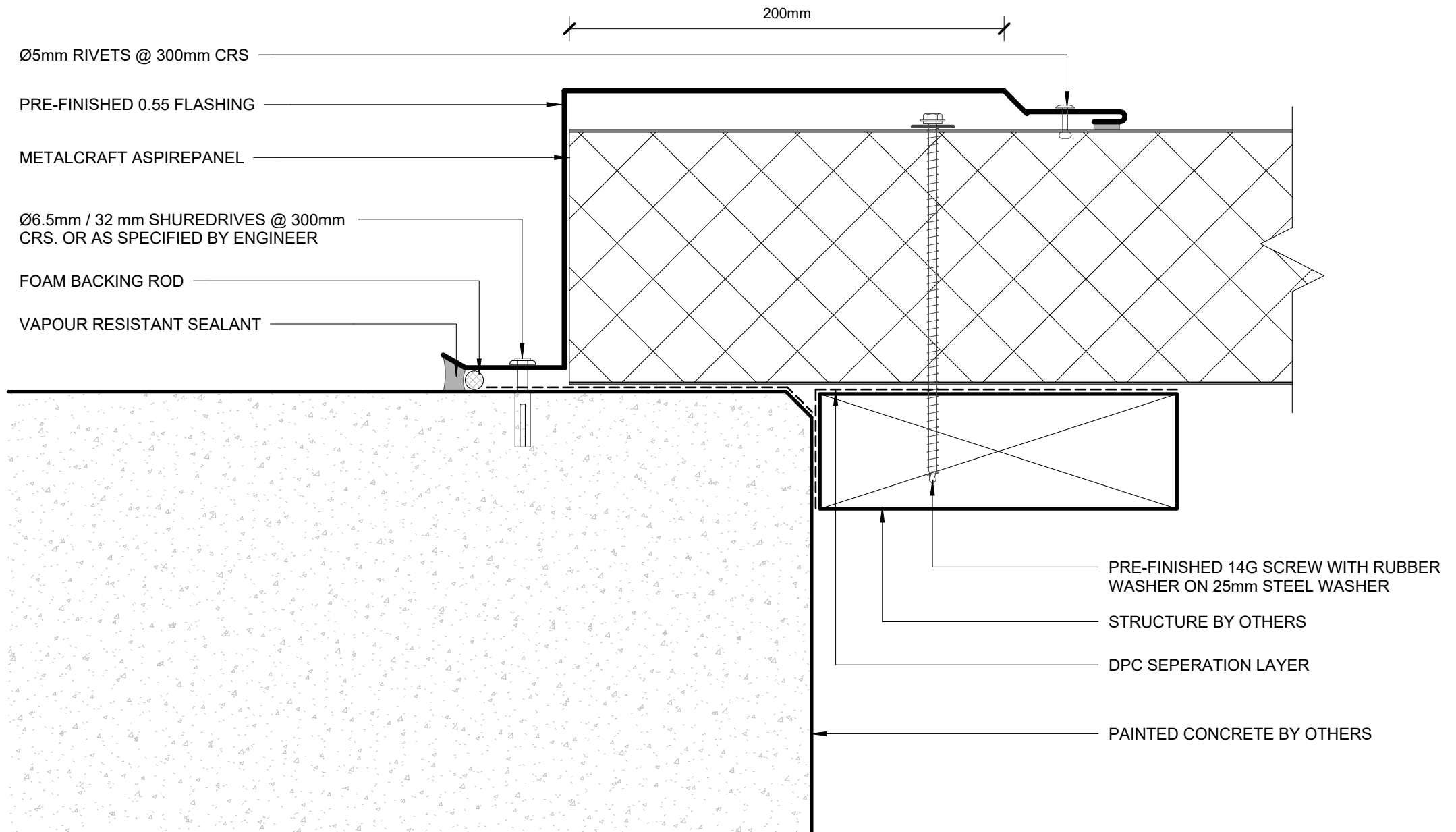
40mm x 40mm x 2mm
FOLDED ALUMINIUM
EXTERNAL ANGLE OR 0.55
SECONDARY FLASHING
(SEE ALTERNATIVE)

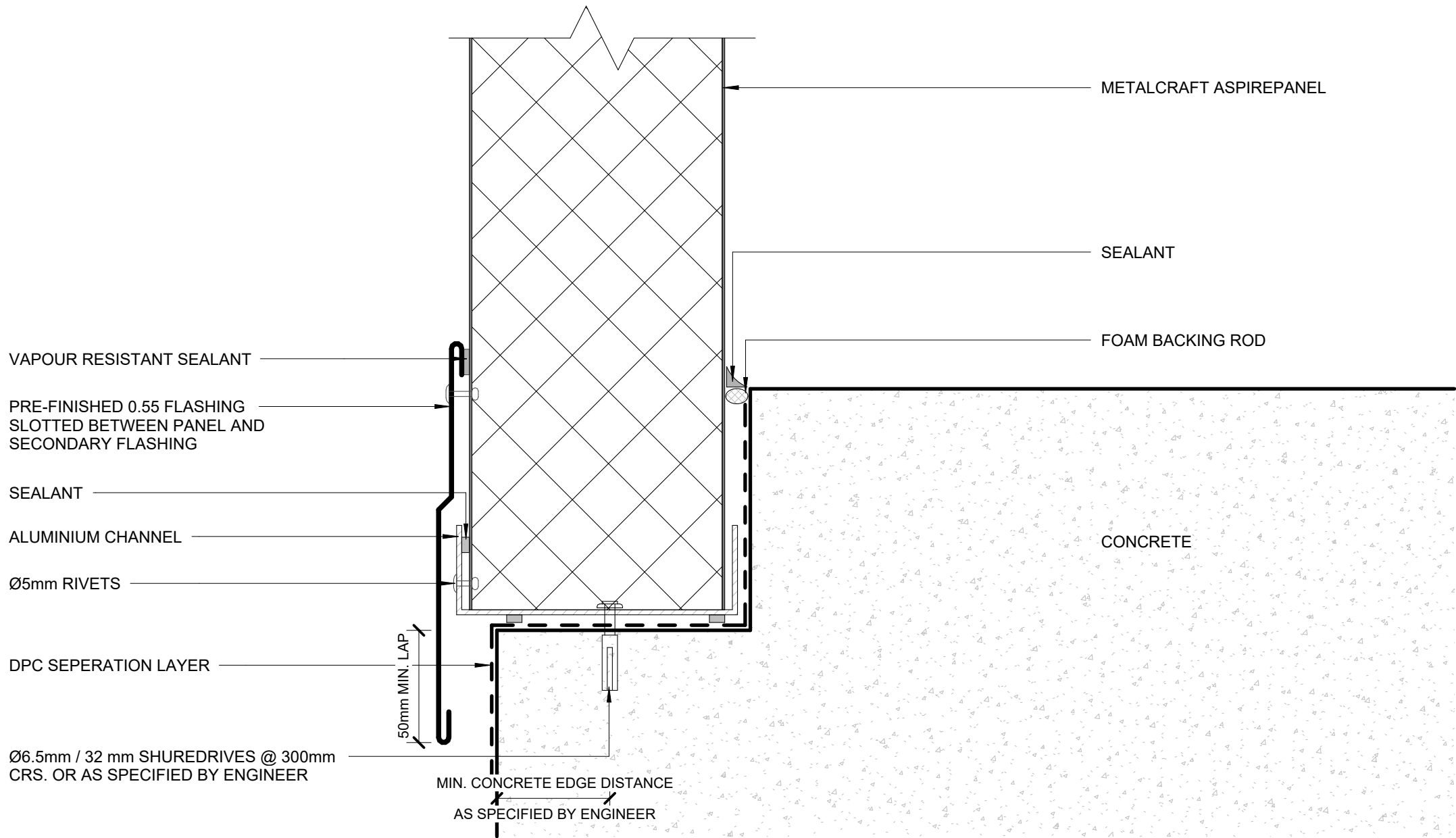
0.55 SECONDARY FLASHING (ALTERNATIVE)

PRE-FINISHED FLASHING



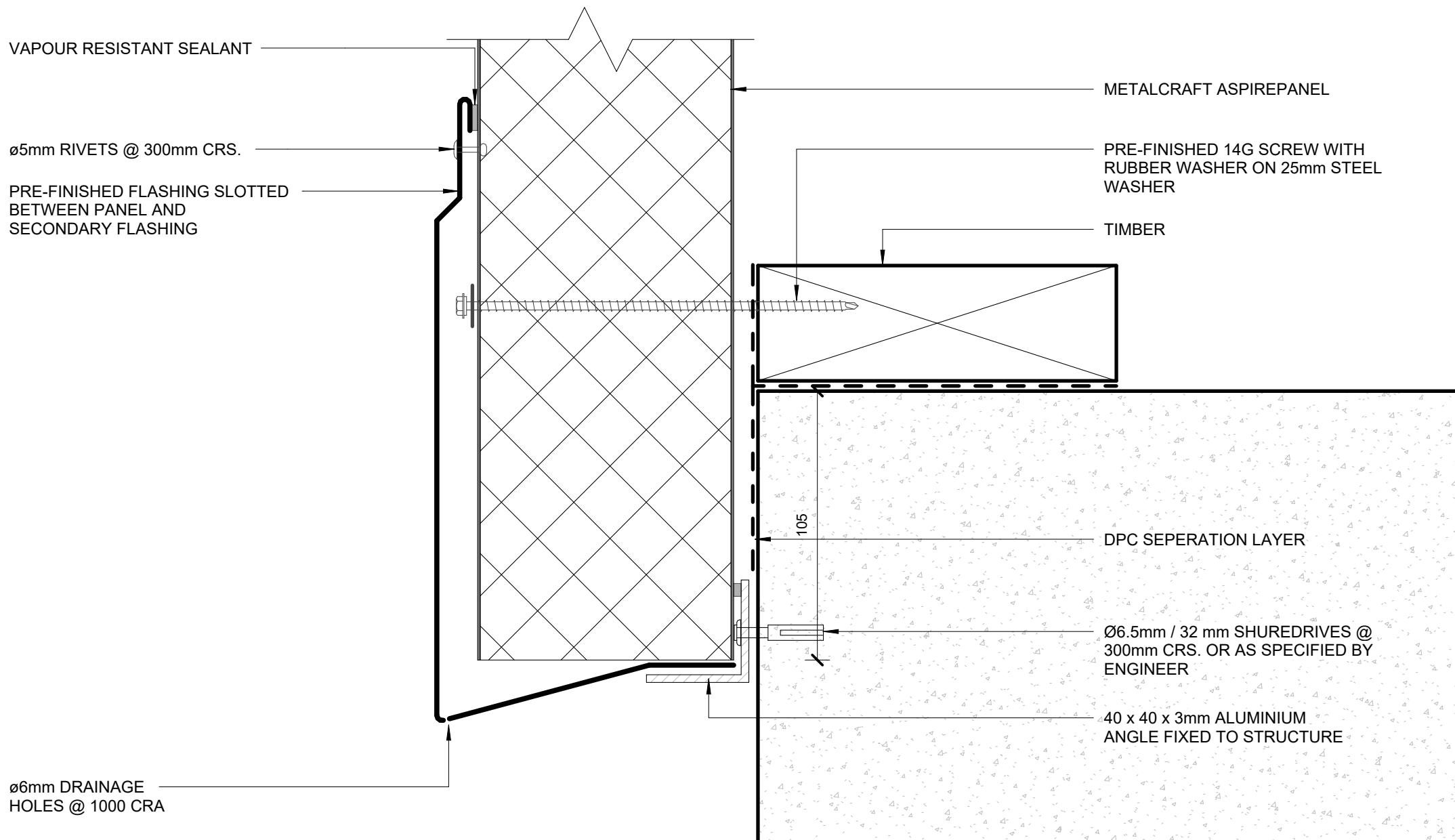


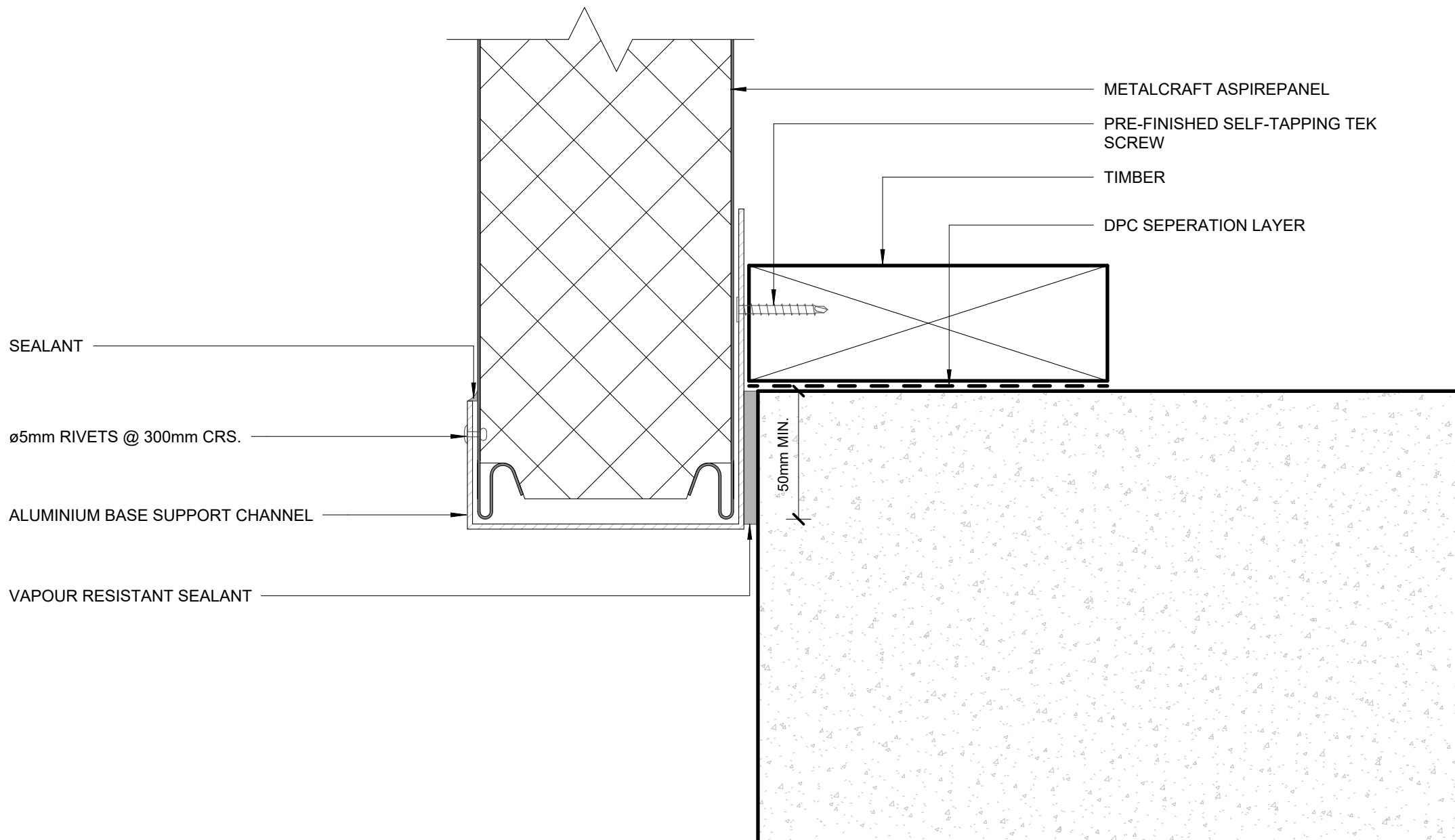




BOTTOM OF CLADDING 01

EXTERNAL WALL DETAILS





BOTTOM OF CLADDING 03

Aspire panel

Rev. 1.1

EXTERNAL WALL DETAILS

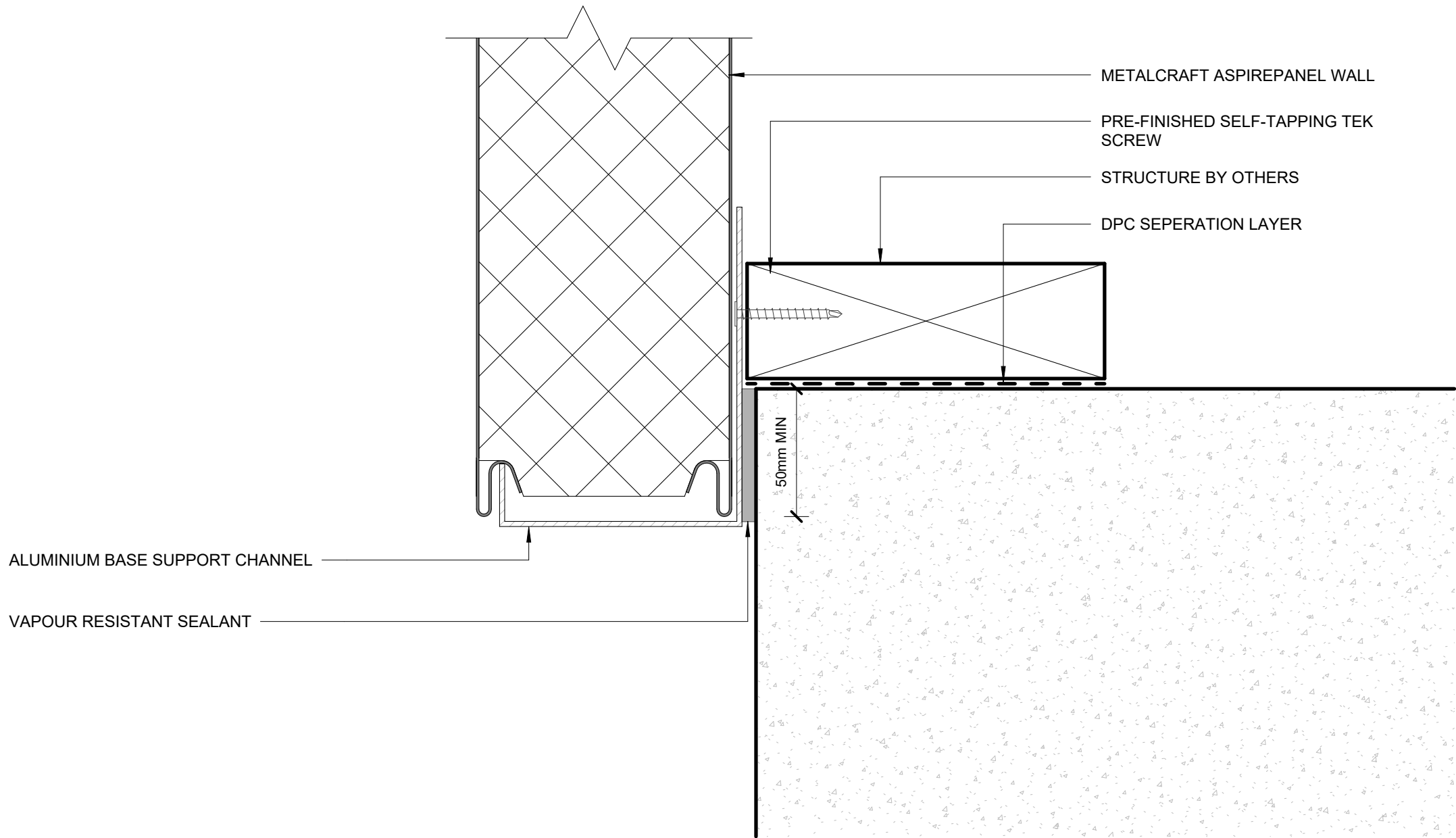
Reference ASPWD

Date 14.04.2025

Scale 1 : 2

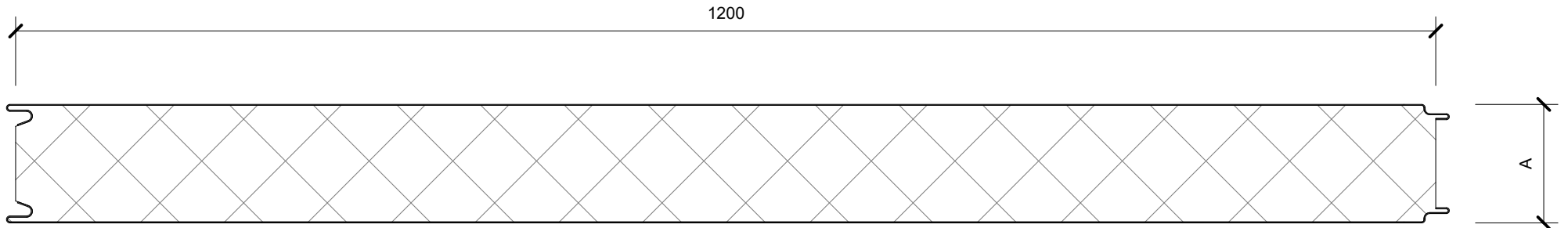
Sheet

18 / 20



BOTTOM OF CLADDING 04

ASPIREPANEL PIR



FLAT FINISH - AVAILABLE BOTH SIDES

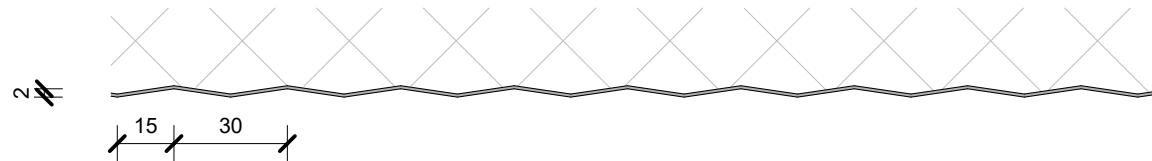
A= 50, 75, 100, 125, 150mm

SCALE @ 1:5

INTERNAL LINER FINISHES

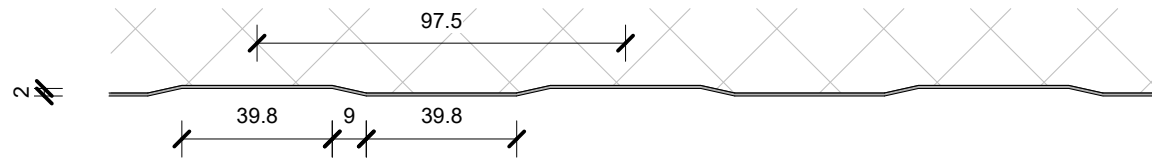
SILKLINE FINISH

- ONE SIDE ONLY



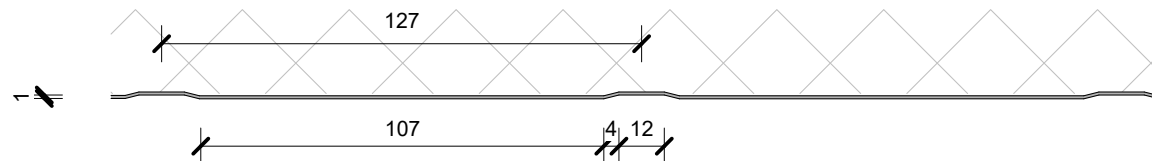
MESA FINISH

- ONE SIDE ONLY



RIBBED FINISH

- AVAILABLE BOTH SIDES



SCALE @ 1:2