

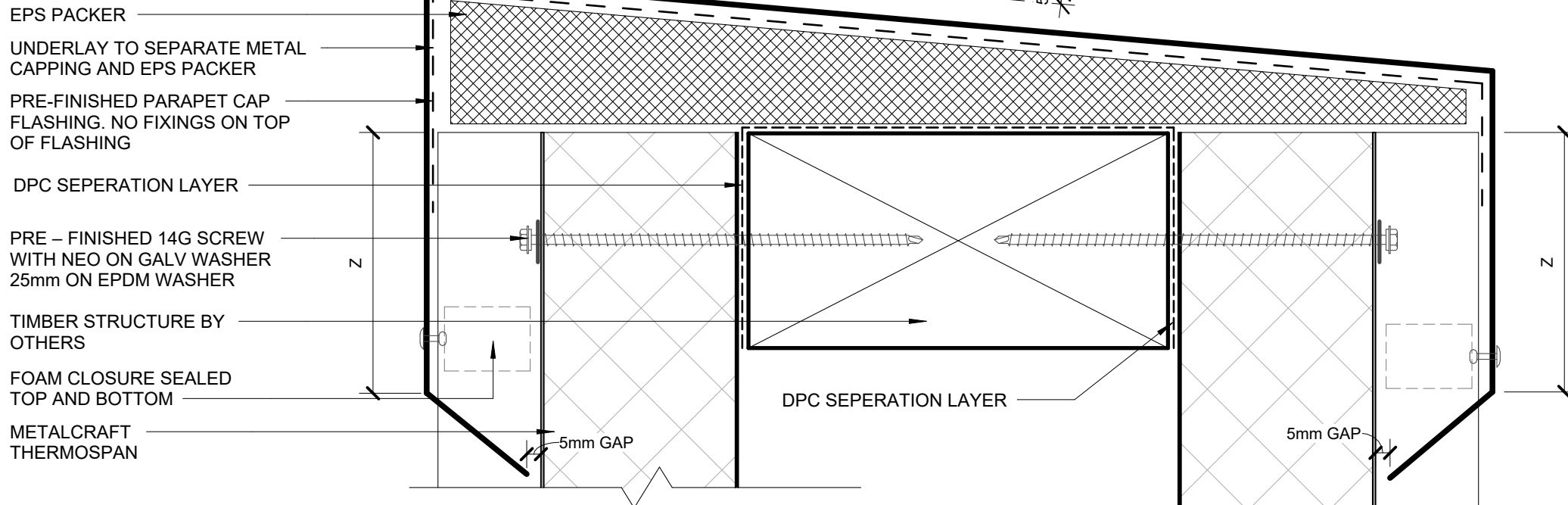
ThermoSpan EPS

EXTERNAL WALL DETAILS VERTICALLY LAID

<u>DETAIL LIST</u>		<u>Revision</u>	<u>Date</u>
00 /12	COVER SHEET		
01 /12	PARAPET	1.0	24.03.2025
02 /12	PIPE PENETRATION w DEKTITE FLASHING	1.0	24.03.2025
03 /12	MIDFLOOR JOINT	1.0	24.03.2025
04 /12	FIXING JOINT	1.0	24.03.2025
05 /12	METERBOX JAMB HEAD AND SILL DETAIL	1.0	24.03.2025
06 /12	INTERNAL CORNER DETAIL	1.0	24.03.2025
07 /12	ALTERNATIVE EXTERNAL CORNER	1.0	24.03.2025
08 /12	ABUTMENT 01	1.0	24.03.2025
09 /12	ABUTMENT 02	1.0	24.03.2025
10 /12	BOTTOM OF CLADDING 01	1.0	24.03.2025
11 /12	BOTTOM OF CLADDING 02	1.0	24.03.2025
12 /12	PANEL PROFILE AND SIZE	1.0	24.03.2025

EXTERNAL

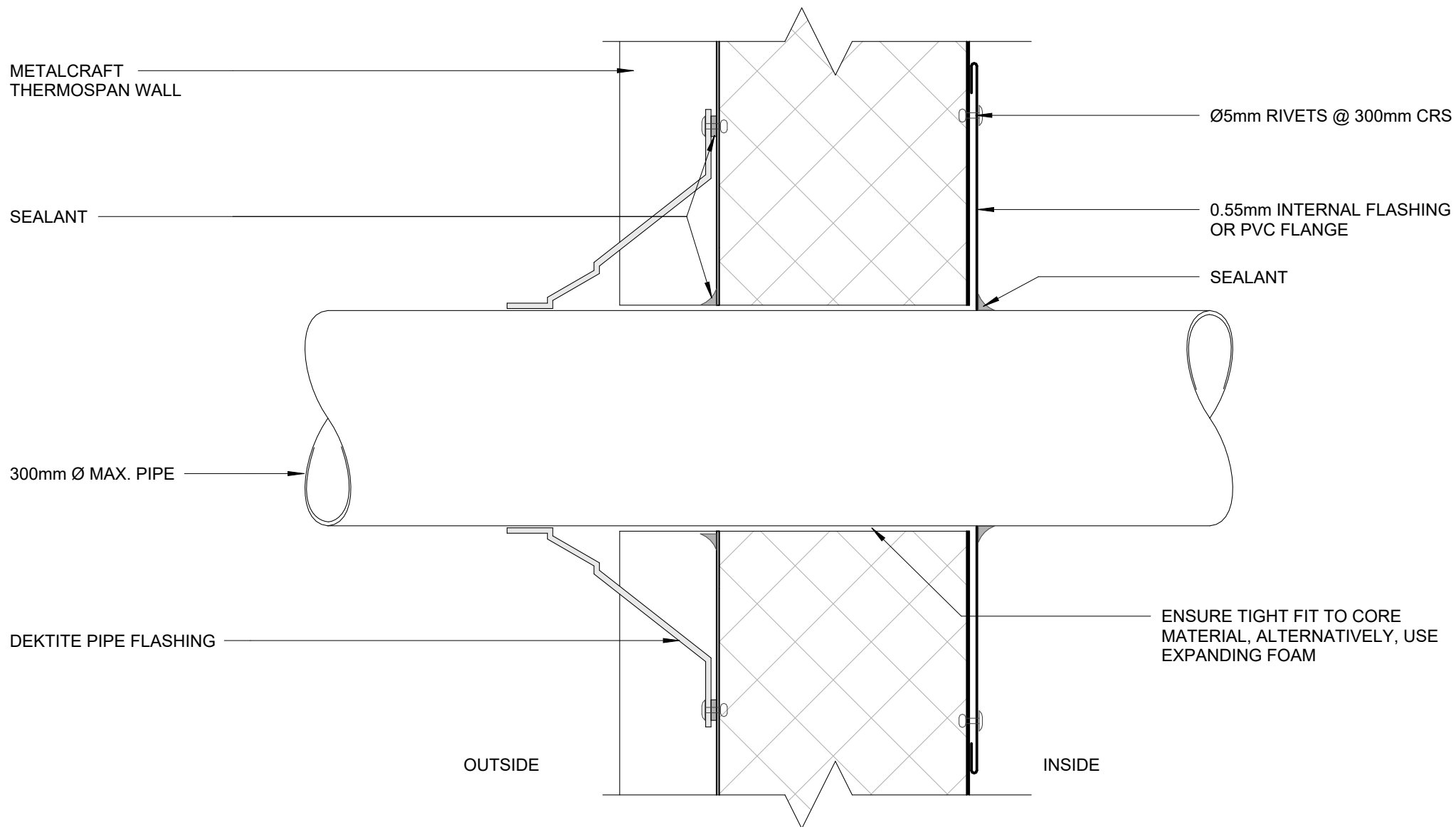
INTERNAL

**AS PER E2/ASI**

	SITUATION 1	SITUATION 2	SITUATION 3
	1. LOW, MEDIUM, HIGH WIND ZONES, WHERE ROOF PITCH $\geq 10^\circ$	1. ALL ROOF PITCHES IN VERY HIGH WIND ZONE 2. LOW, MEDIUM, HIGH WIND ZONES WHERE ROOF PITCH $\leq 10^\circ$	1. FOR ALL ROOF PITCHES IN EXTRA HIGH WIND ZONES
Z	MIN. 50mm	MIN. 70mm	MIN. 90mm

AS PER MRM CODE OF PRACTICE

	CATEGORY A	CATEGORY B	CATEGORY C	CATEGORY D
	LOW, MEDIUM OR HIGH WIND ZONES - ALL ROOF PITCHES VERY HIGH AND EXTRA HIGH WIND ZONES WHERE THE PITCH IS EQUAL TO OR GREATER THAN 10°	VERY HIGH WIND ZONES ROOF PITCH $< 8^\circ$ EXTRA HIGH WIND ZONES - ALL ROOF PITCHES	SED WIND ZONES UP TO 60 m/s ALL ROOF PITCH	SED WIND ZONES UP TO 68 m/s ALL ROOF PITCH
Z	MIN. 50mm (VERTICALLY DOWN FACE - SMOOTH) MIN. 75mm (VERTICALLY DOWN FACE - PROFILED)	MIN. 75mm (VERTICALLY DOWN FACE - SMOOTH) MIN. 100mm (VERTICALLY DOWN FACE - PROFILED)	MIN. 100mm (VERTICALLY DOWN FACE - SMOOTH) MIN. 125mm (VERTICALLY DOWN FACE - PROFILED)	MIN. 100mm (VERTICALLY DOWN FACE - SMOOTH) MIN. 125mm (VERTICALLY DOWN FACE - PROFILED)



PIPE PENETRATION w DEKTITE FLASHING

ThermoSpan EPS

Rev. 1.0

EXTERNAL WALL DETAILS
VERTICALLY LAID

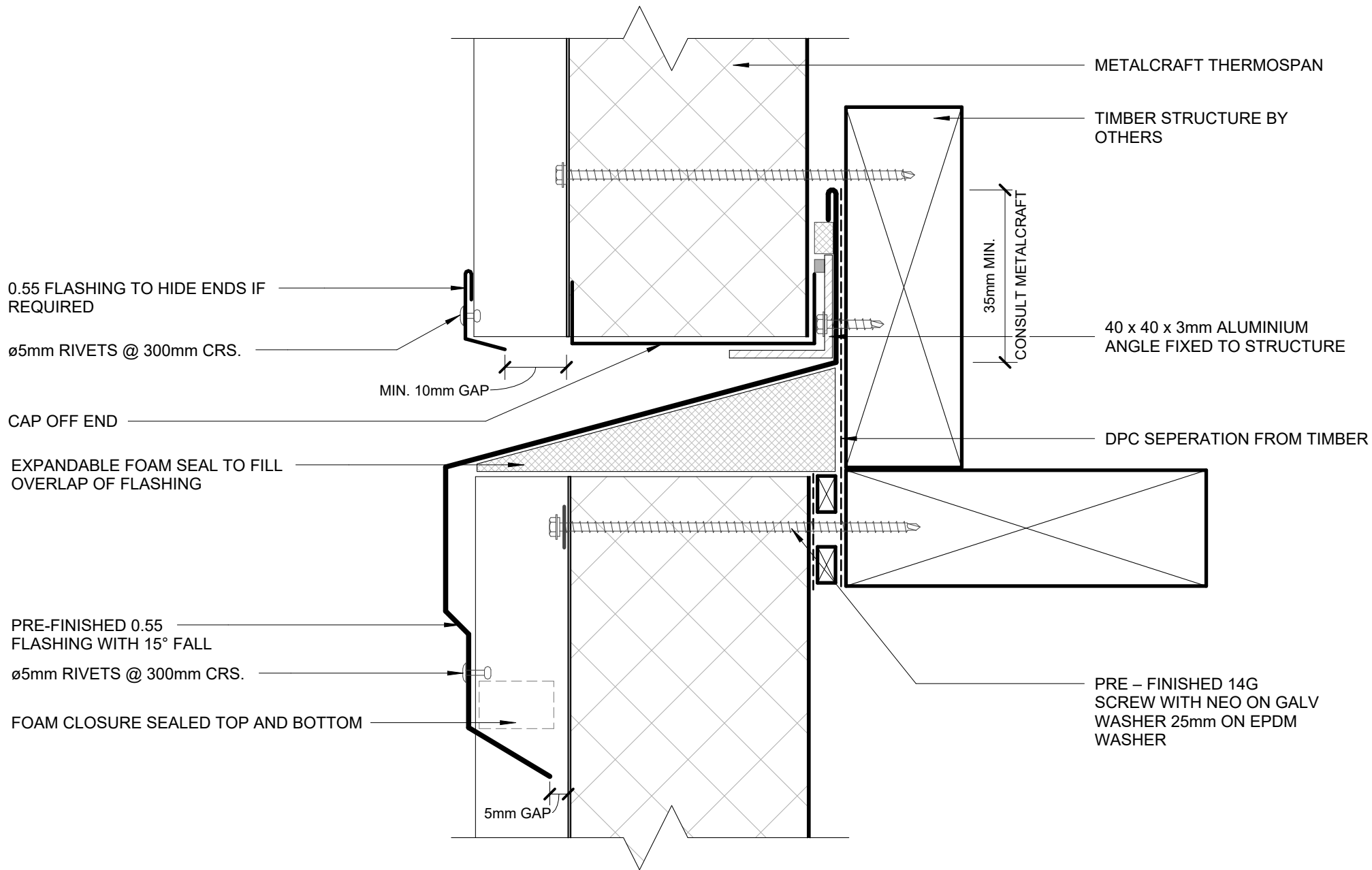
Reference TSEW

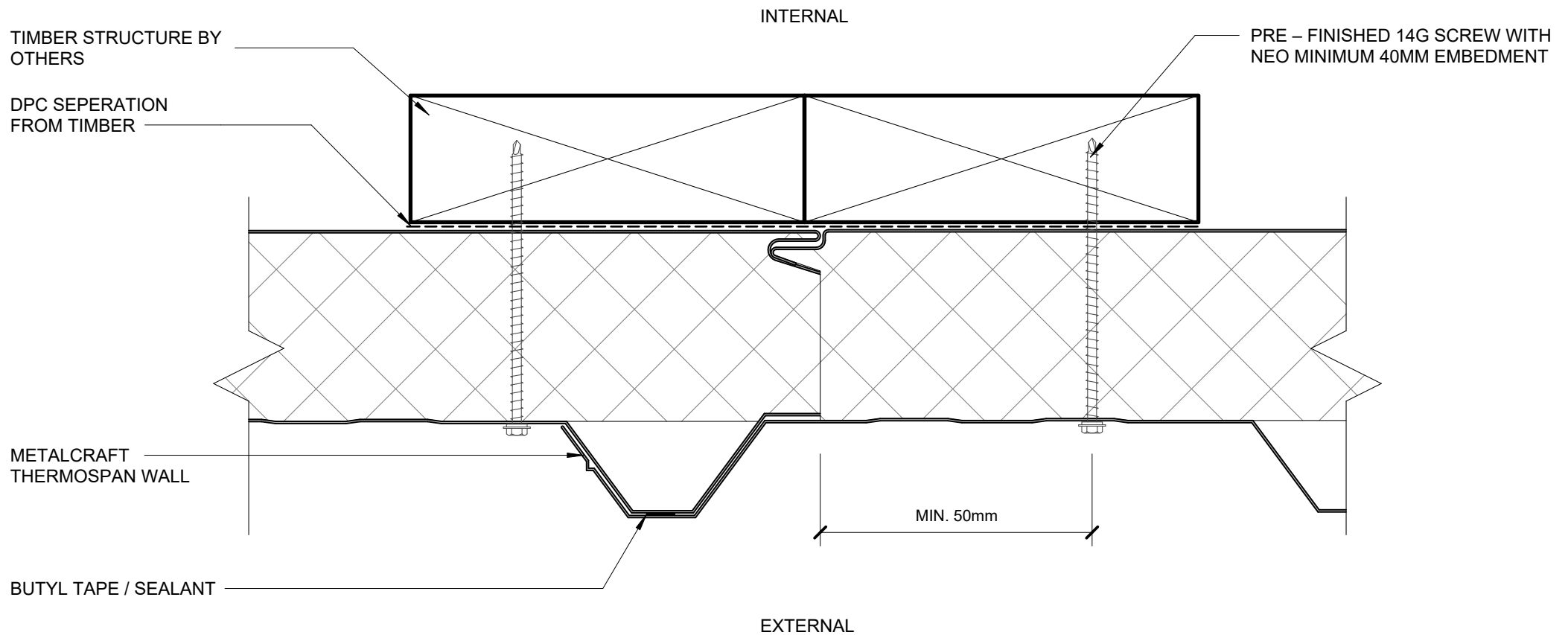
Date 24.03.2025

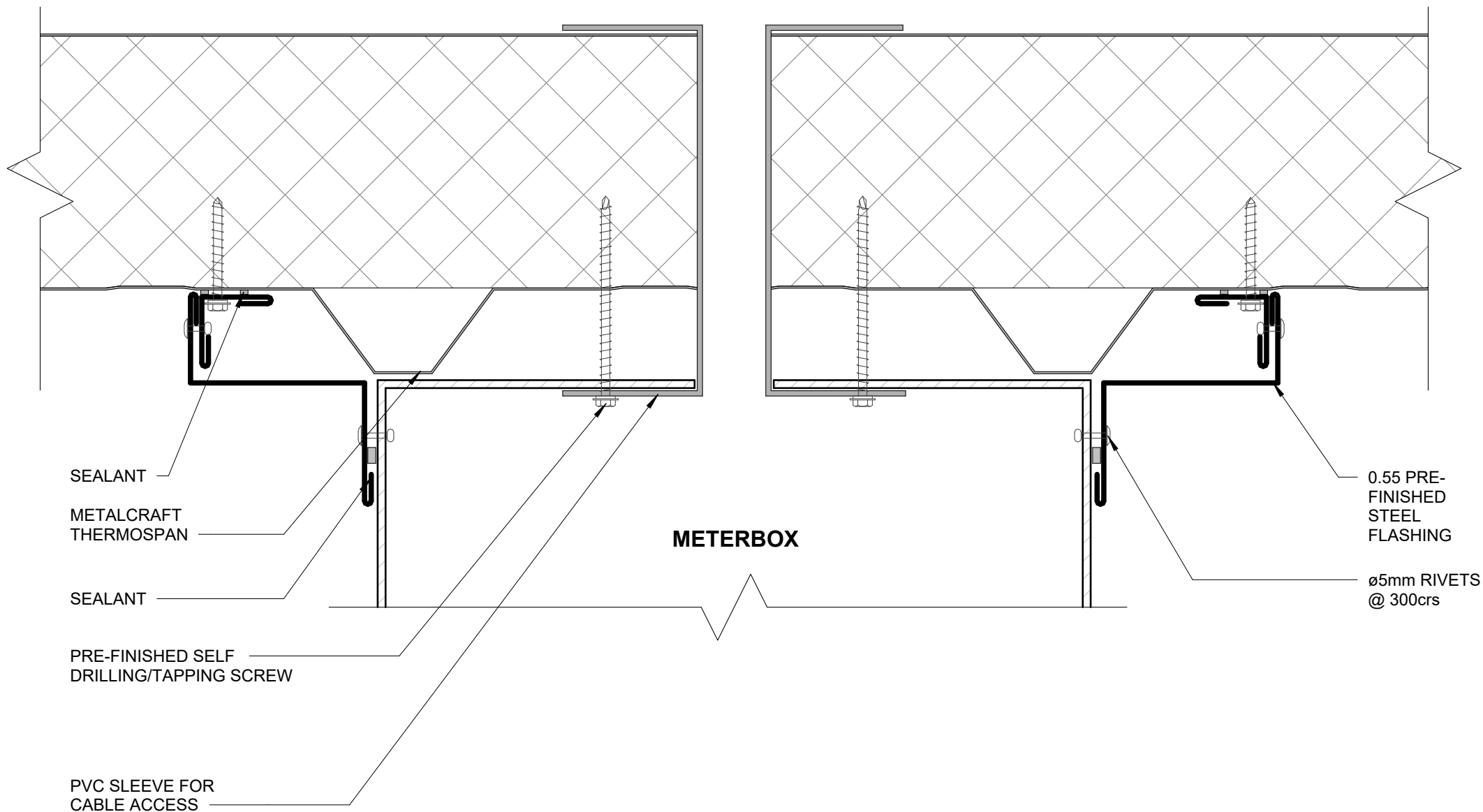
Scale 1 : 2

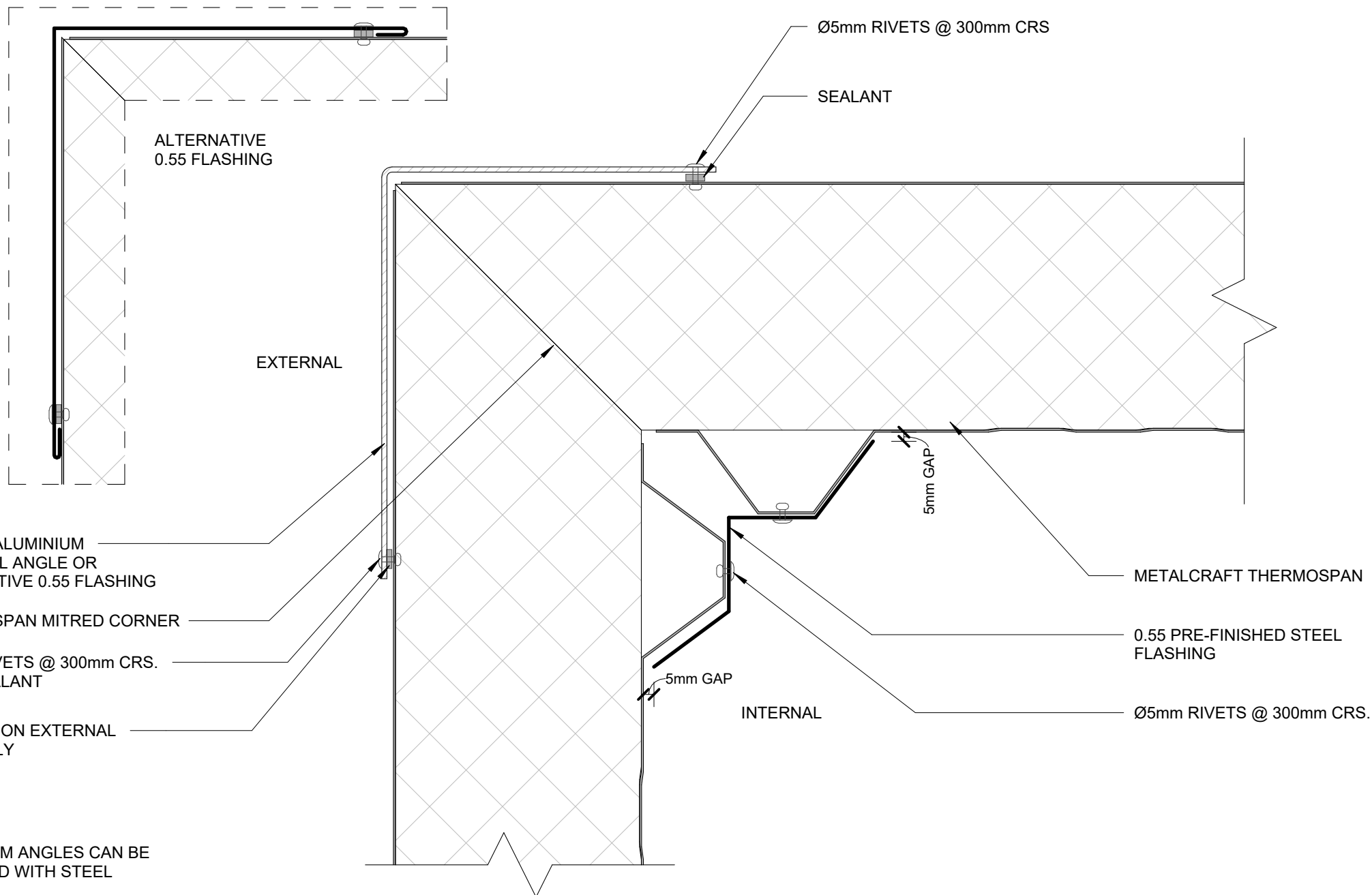
Sheet

02 / 12









INTERNAL CORNER DETAIL

ThermoSpan EPS

Rev. 1.0

EXTERNAL WALL DETAILS
VERTICALLY LAID

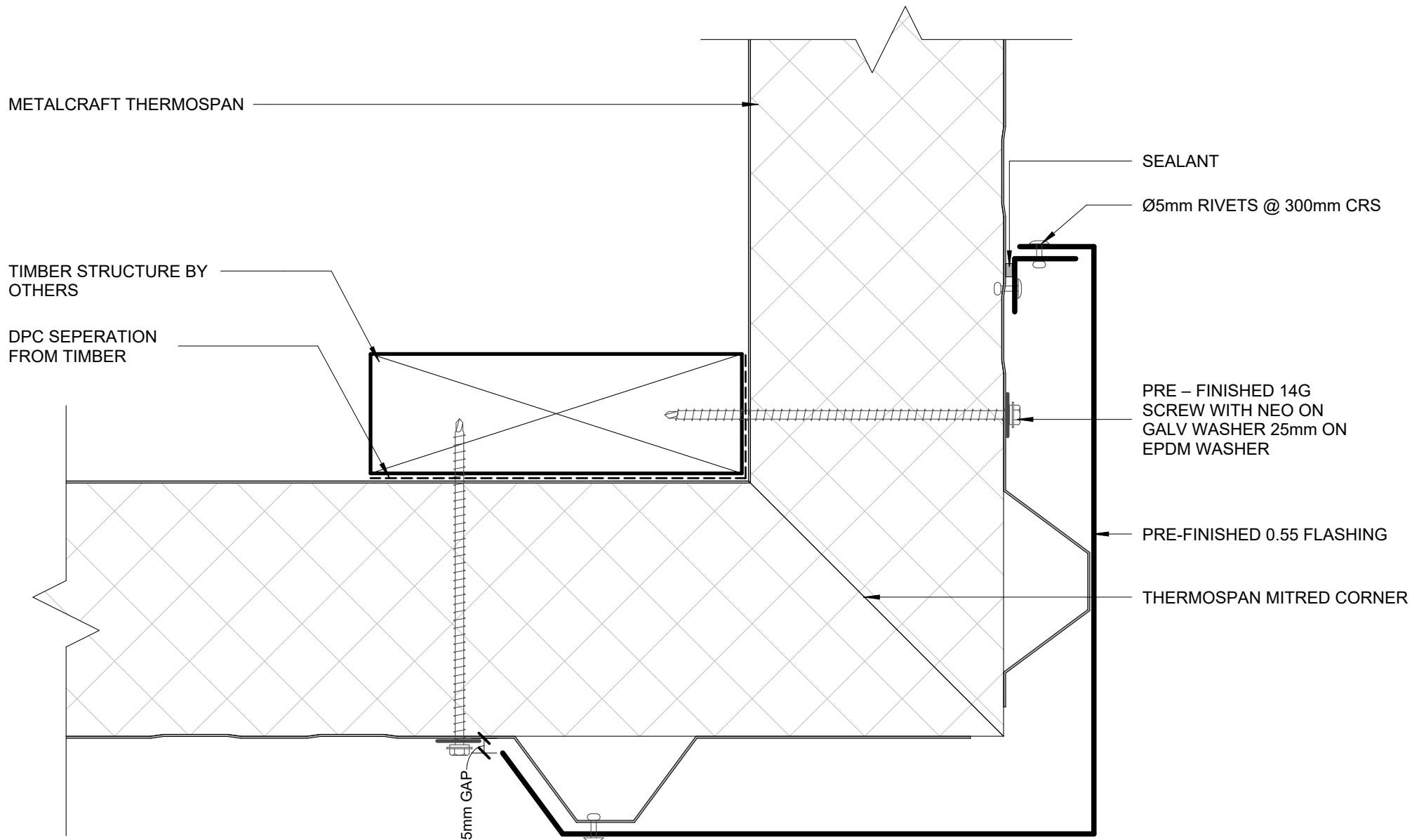
Reference TSEW

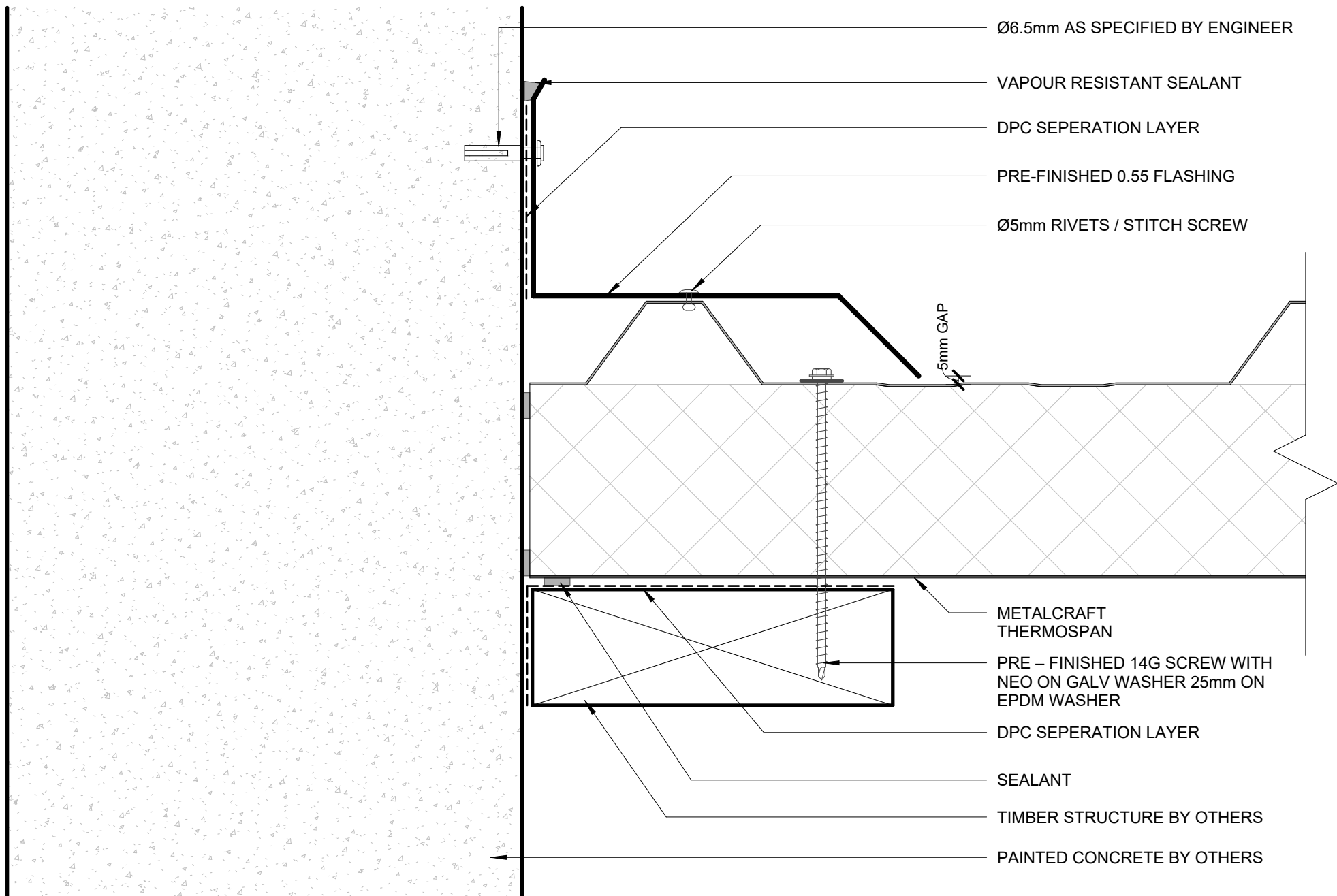
Date 24.03.2025

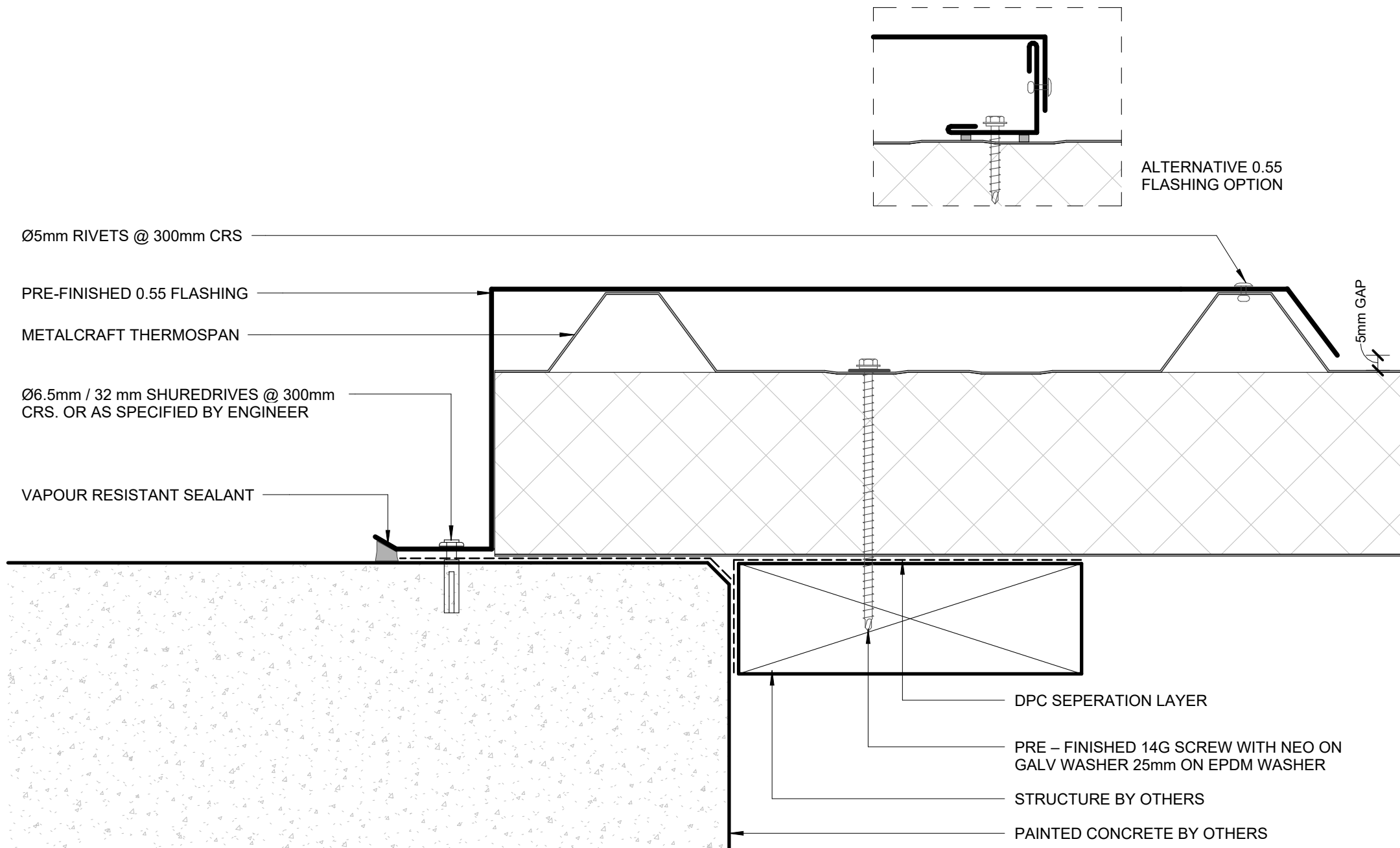
Scale 1 : 2

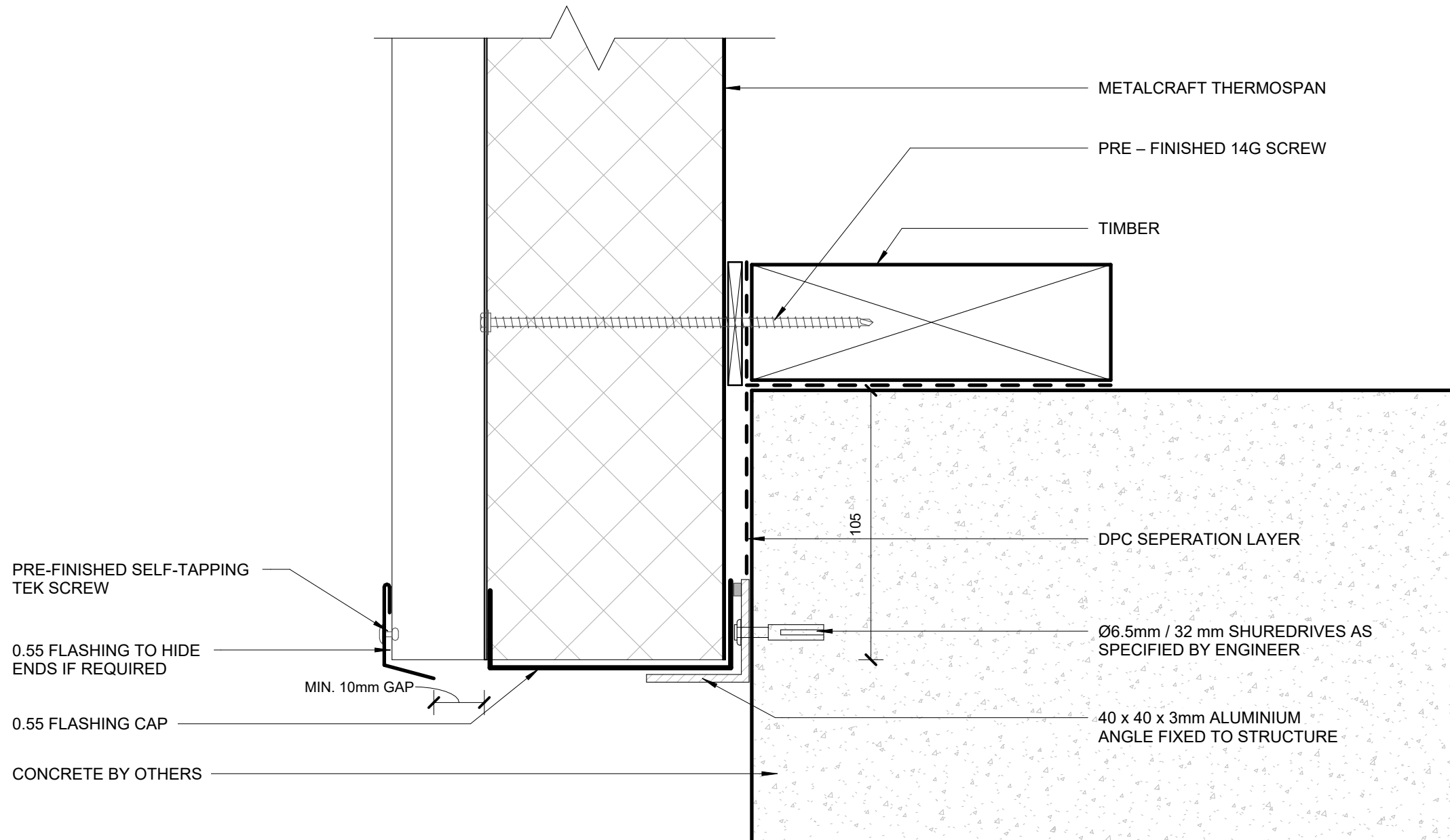
Sheet

06 / 12

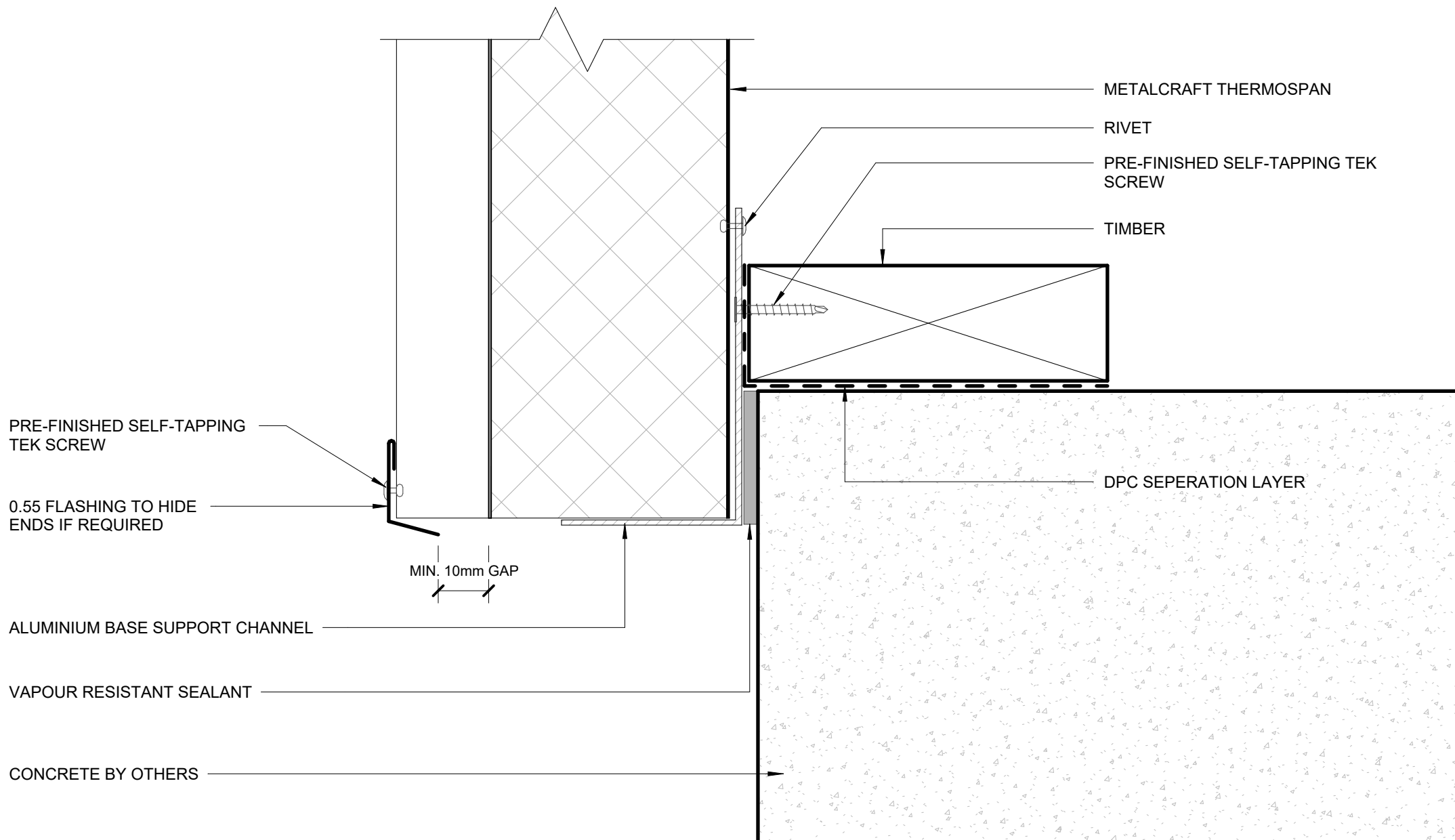






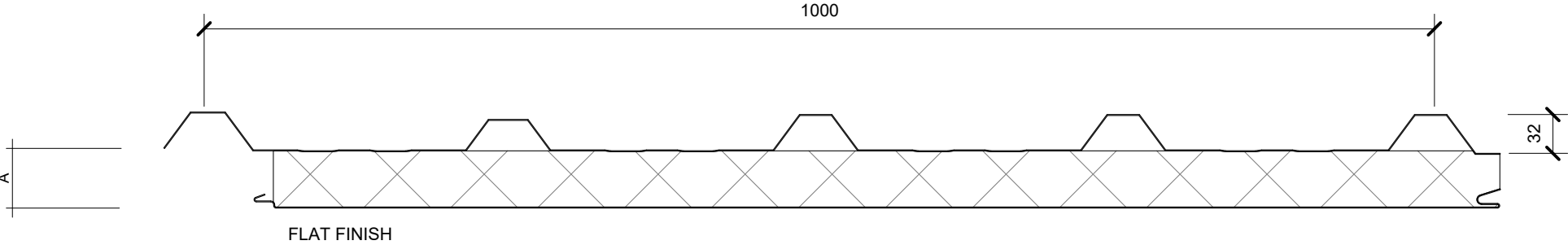


BOTTOM OF CLADDING 01



BOTTOM OF CLADDING 02

THERMOSPAN EPS

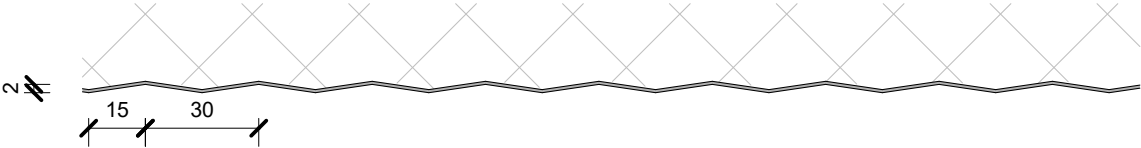


A = 50, 75, 100, 125,
 150, 200, 250

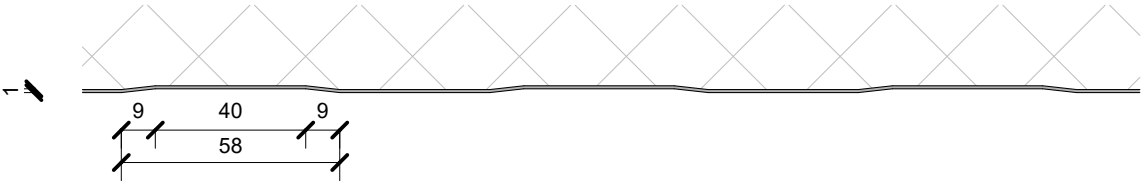
SCALE @ 1:5

INTERNAL LINER FINISHES

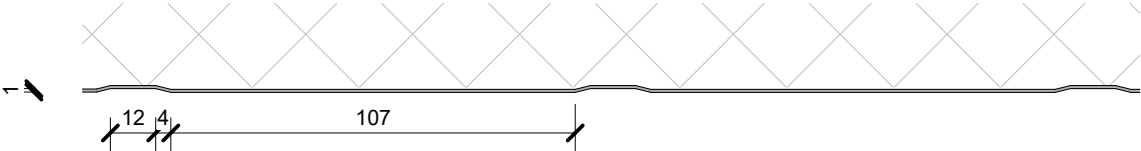
SILKLINE FINISH



MESA FINISH



RIBBED FINISH



SCALE @ 1:2