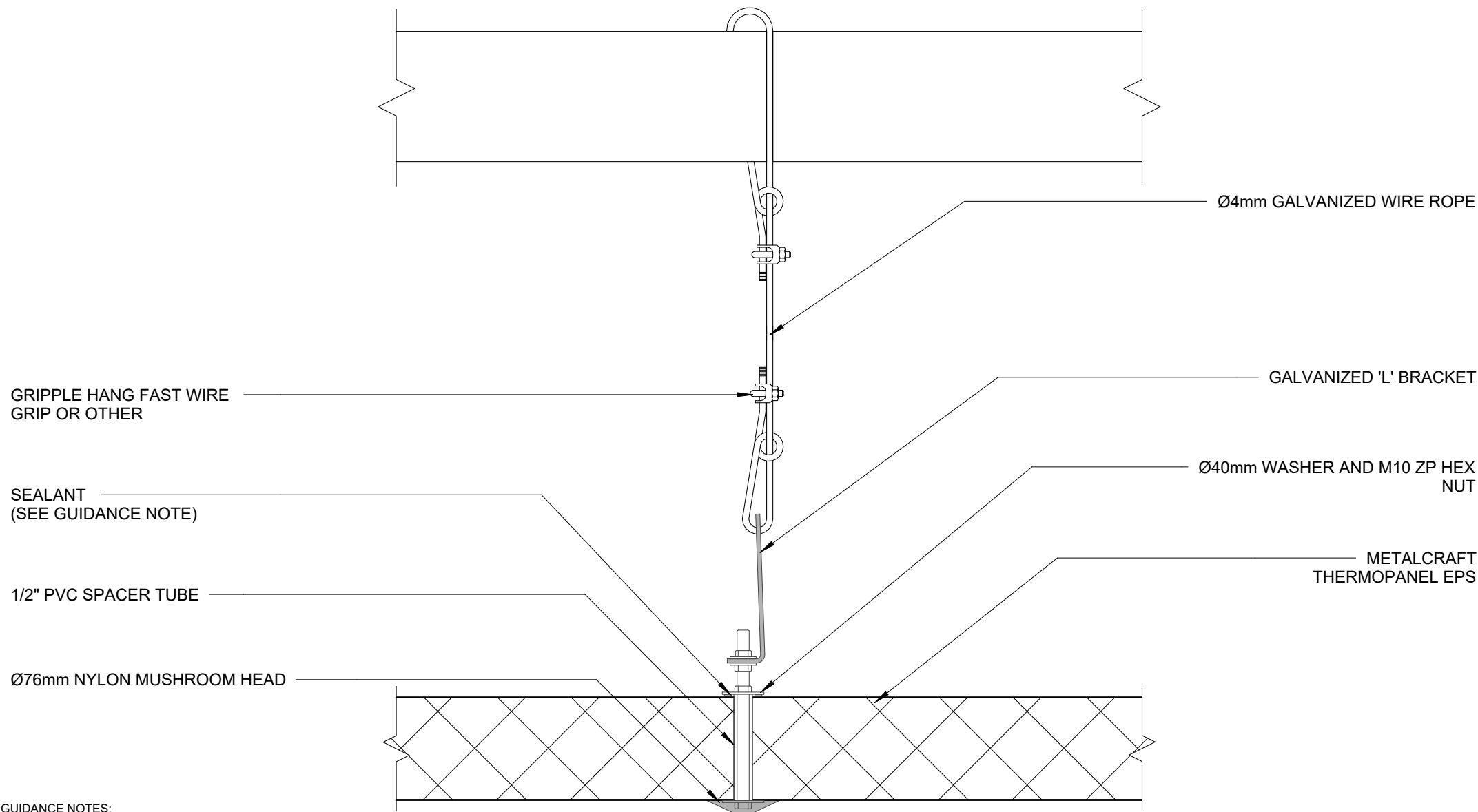


Thermopanel EPS

CONTROLLED ENVIRONMENT

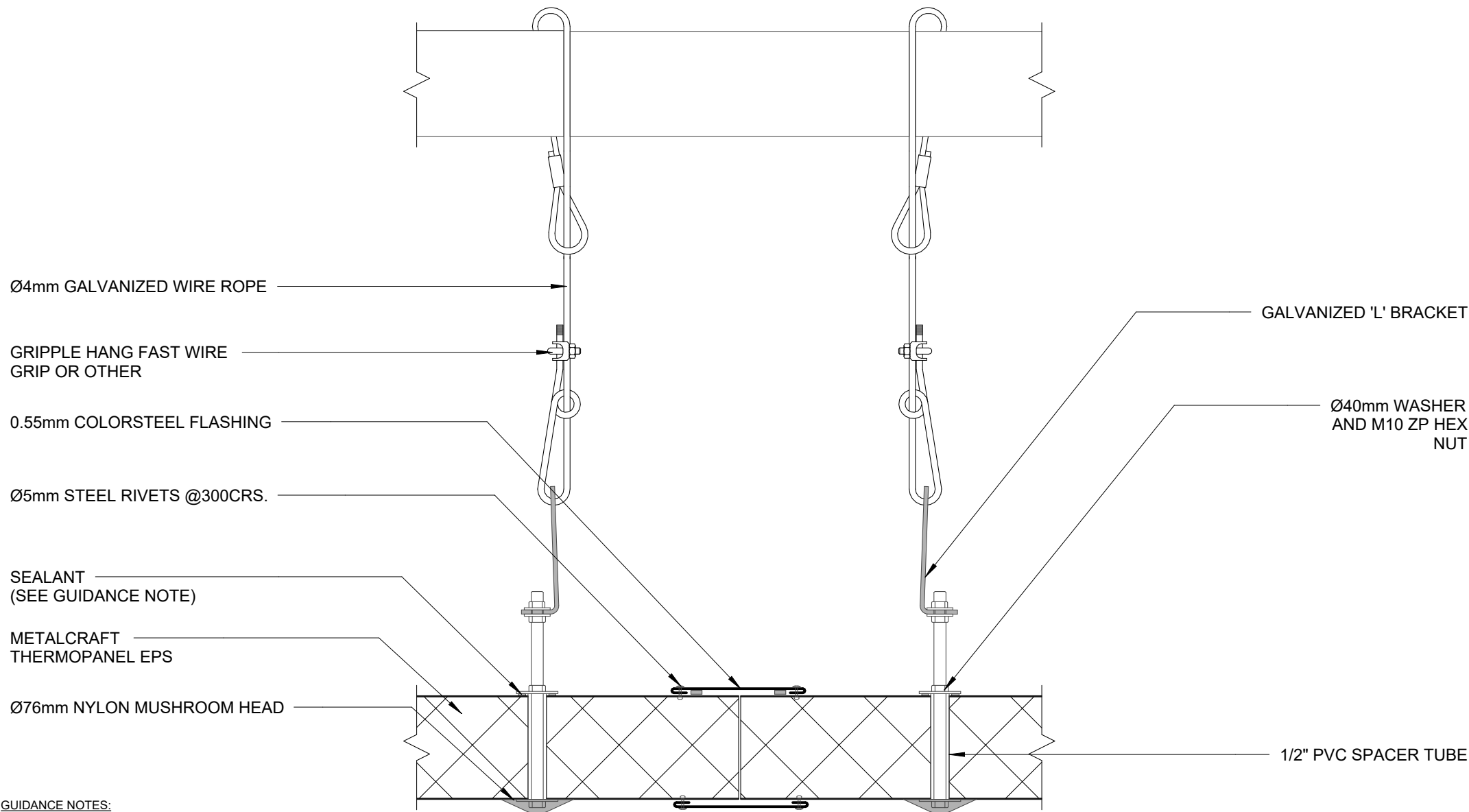
DETAIL LIST

		<u>Revision</u>	<u>Date</u>
00 / 23	COVER SHEET		
01 / 23	CEILING SUSPENSION 01	1.3	14.04.2025
02 / 23	CEILING SUSPENSION 02	1.3	14.04.2025
03 / 23	FREEZER FLOOR 01	2.2	14.04.2025
04 / 23	FREEZER FLOOR 02	1.3	14.04.2025
05 / 23	FREEZER FLOOR 03	2.2	14.04.2025
06 / 23	PROCESS FLOOR 01	1.3	14.04.2025
07 / 23	PROCESS FLOOR 02	1.3	14.04.2025
08 / 23	PROCESS FLOOR 03	1.3	14.04.2025
09 / 23	PARTITION 01	2.2	14.04.2025
10 / 23	GIRT 01	2.2	14.04.2025
11 / 23	GIRT 02	2.2	14.04.2025
12 / 23	GIRT 03	1.3	14.04.2025
13 / 23	VERTICAL CORNER COOLROOM / FREEZER	1.3	14.04.2025
14 / 23	ROOF TO WALL COOLROOM / FREEZER 01	2.2	14.04.2025
15 / 23	COOLROOM / FREEZER CONNECTION 01	1.3	14.04.2025
16 / 23	FREEZER PARTITION 01	1.3	14.04.2025
17 / 23	COOLROOM / FREEZER CEILING DETAIL 01	2.2	14.04.2025
18 / 23	CEILING TO WALL DETAIL 01	1.3	14.04.2025
19 / 23	TYPICAL WALL JOINT FREEZER / COOLROOM 01	1.3	14.04.2025
20 / 23	CLEAN ROOM ROOF TO WALL	1.3	14.04.2025
21 / 23	PANEL PROFILES AND SIZES	1.3	14.04.2025
22 / 23	COOL ROOM BASE DETAIL 01	1.1	14.04.2025
23 / 23	COOL ROOM BASE DETAIL 02	1.1	14.04.2025



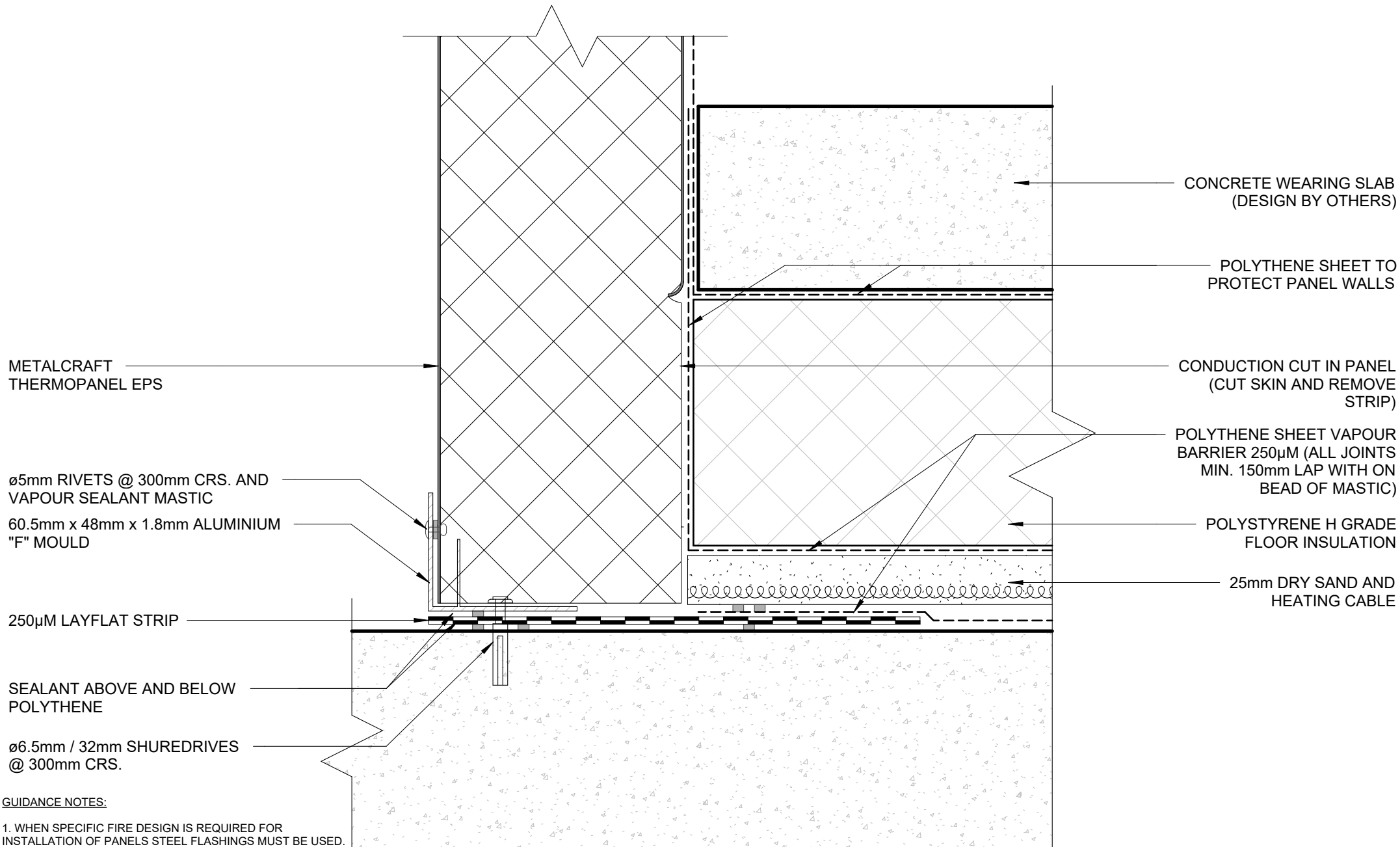
GUIDANCE NOTES:

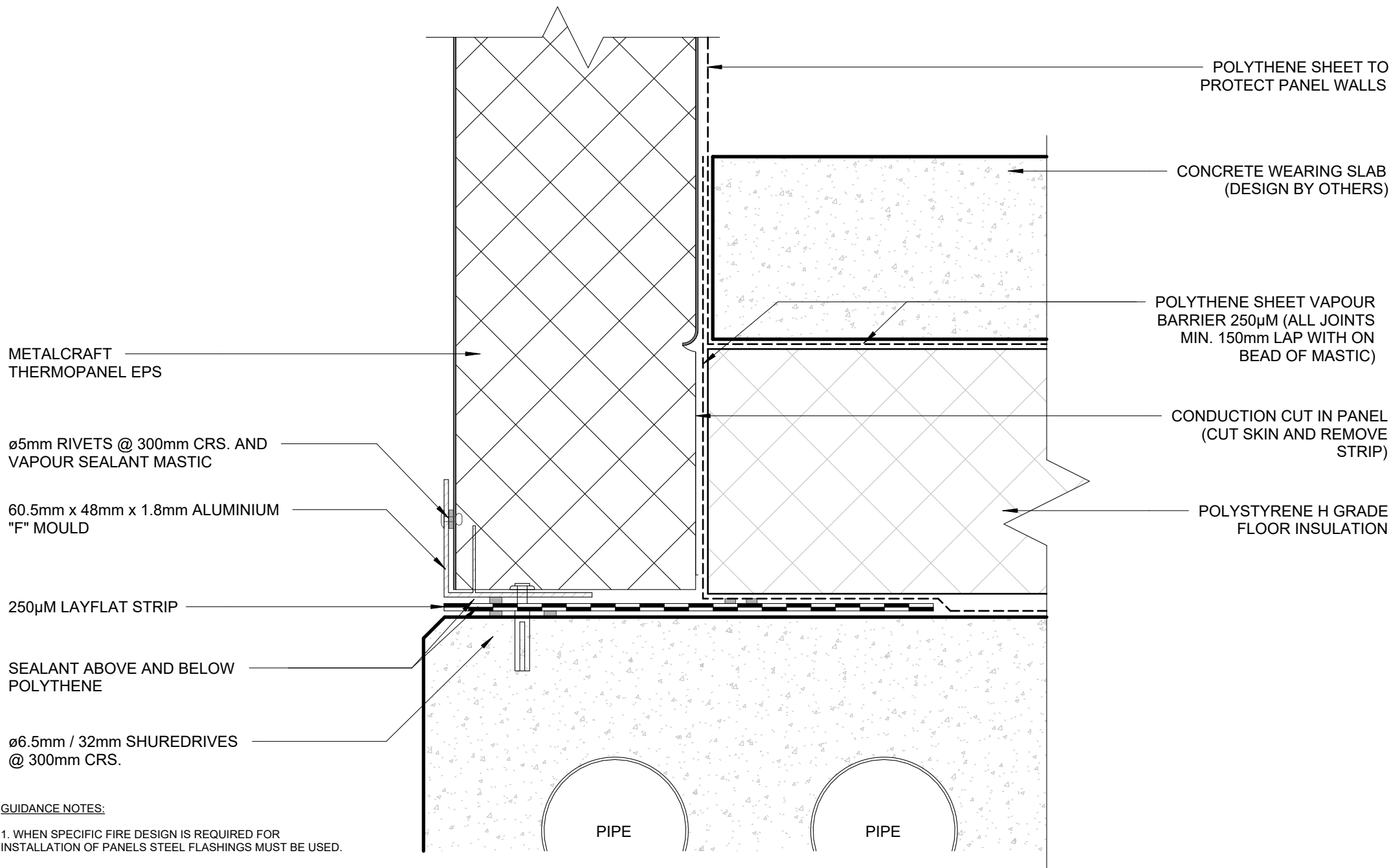
1. WHEN SPECIFIC FIRE DESIGN IS REQUIRED FOR INSTALLATION OF PANELS STEEL FLASHINGS MUST BE USED.
2. FIRE RESISTANT SEALANT MUST BE USED WHEN SPECIFIC FIRE DESIGN IS REQUIRED.



GUIDANCE NOTES:

1. WHEN SPECIFIC FIRE DESIGN IS REQUIRED FOR INSTALLATION OF PANELS STEEL FLASHINGS MUST BE USED.
2. FIRE RESISTANT SEALANT MUST BE USED WHEN SPECIFIC FIRE DESIGN IS REQUIRED.

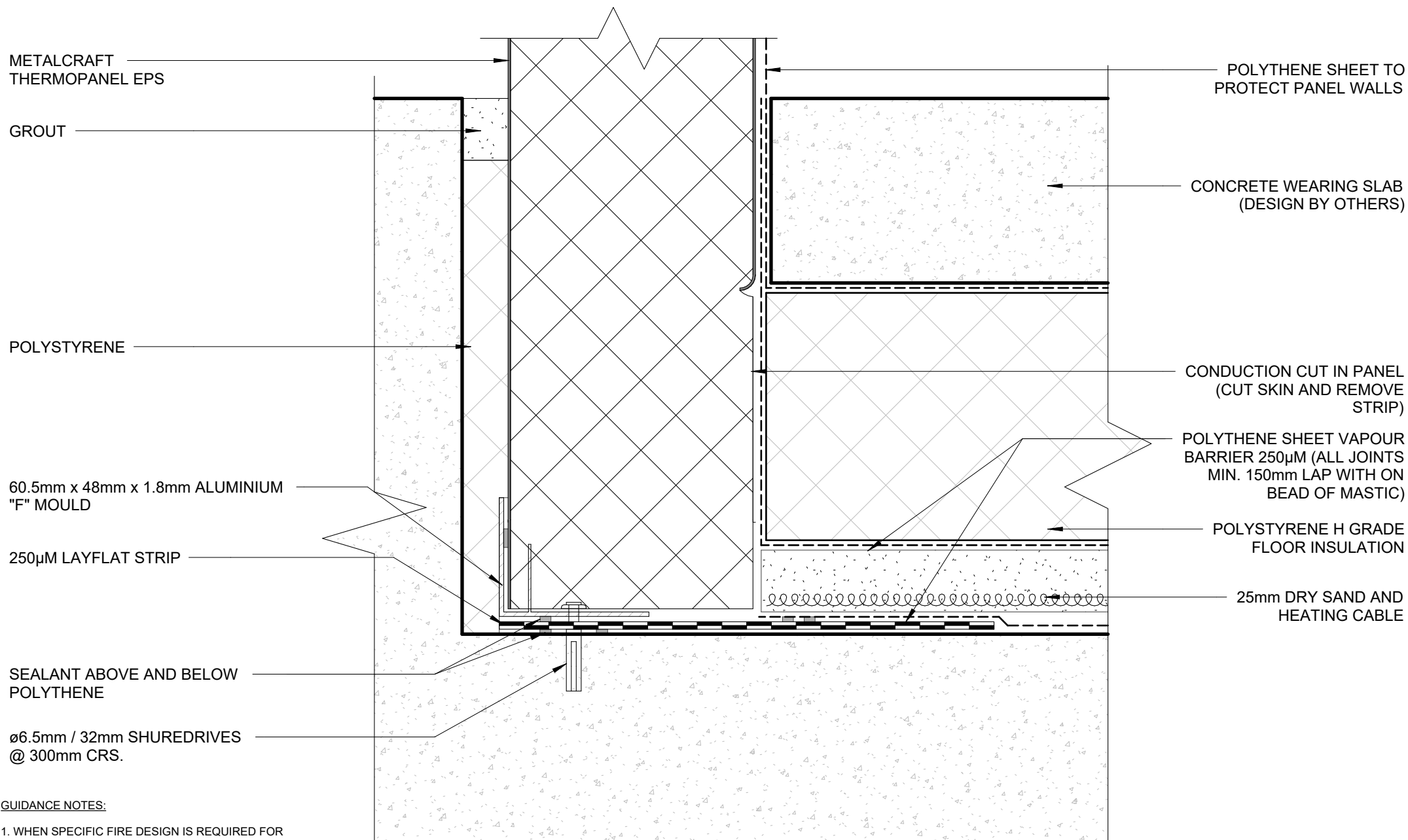




GUIDANCE NOTES:

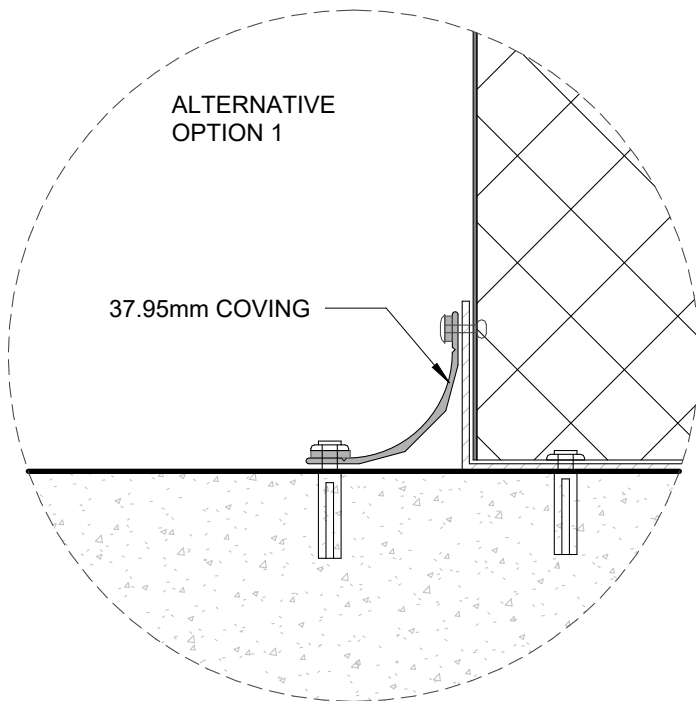
1. WHEN SPECIFIC FIRE DESIGN IS REQUIRED FOR INSTALLATION OF PANELS STEEL FLASHINGS MUST BE USED.

2. FIRE RESISTANT SEALANT MUST BE USED WHEN SPECIFIC FIRE DESIGN IS REQUIRED.



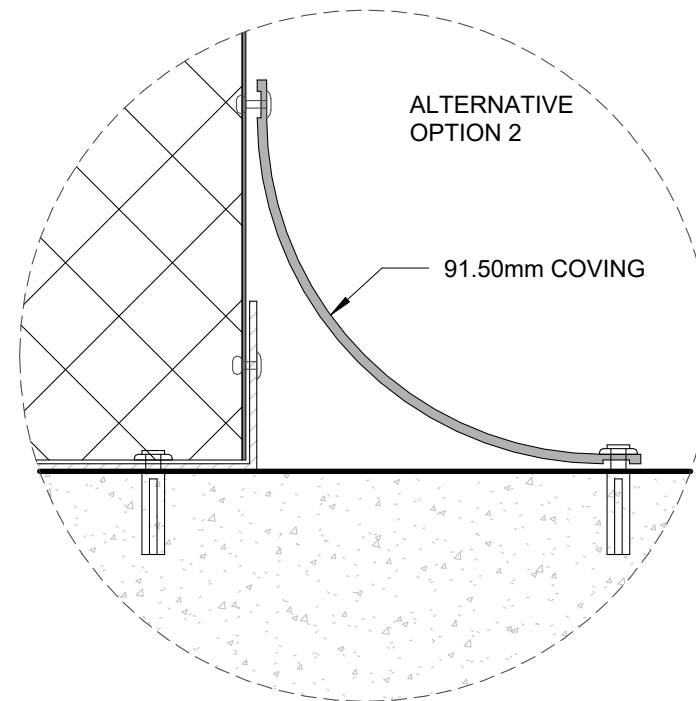
GUIDANCE NOTES:

1. WHEN SPECIFIC FIRE DESIGN IS REQUIRED FOR INSTALLATION OF PANELS STEEL FLASHINGS MUST BE USED.
2. FIRE RESISTANT SEALANT MUST BE USED WHEN SPECIFIC FIRE DESIGN IS REQUIRED.



ALTERNATIVE
OPTION 1

37.95mm COVING



ALTERNATIVE
OPTION 2

91.50mm COVING

Ø5mm/16mm RIVETS @
300mm CRS WITH SEALANT
(SEE GUIDANCE NOTE)

ALUMINIUM COVE BASE

F.F.L.

ø6.5mm / 32mm SHUREDRIVES
@ 300mm CRS.

METALCRAFT
THERMOPANEL EPS

GUIDANCE NOTES:

1. WHEN SPECIFIC FIRE DESIGN IS REQUIRED FOR INSTALLATION OF PANELS STEEL FLASHINGS MUST BE USED.
2. FIRE RESISTANT SEALANT MUST BE USED WHEN SPECIFIC FIRE DESIGN IS REQUIRED.

DISCLAIMER:
All details are to be used for indicative purposes only and the designer should consult both the MRM code of practice and E2 and all other relevant building codes. Details of the supporting mechanisms are indicative only. These installation details must be read in conjunction with all other product literature available for download from www.metalcraftinsulatedpanels.co.nz

METALCRAFT
THERMOPANEL EPS

ø5mm RIVETS @ 300mm CRS. WITH
SEALANT

ALUMINIUM CHANNEL

ø6.5mm / 32mm SHUREDRIVES
@ 300mm CRS.

ø5mm RIVETS @ 300mm CRS.

CONCRETE PLINTH

F.F.L.

GUIDANCE NOTES:

1. WHEN SPECIFIC FIRE DESIGN IS REQUIRED FOR
INSTALLATION OF PANELS STEEL FLASHINGS MUST BE USED.

2. FIRE RESISTANT SEALANT MUST BE USED WHEN SPECIFIC
FIRE DESIGN IS REQUIRED.

Metalcraft
Insulated Panels
www.metalcraftinsulatedpanels.co.nz

DISCLAIMER:
All details are to be used for indicative purposes only and the designer should consult both the MRM
code of practice and E2 and all other relevant building codes. Details of the supporting mechanisms are
indicative only. These installation details must be read in conjunction with all other product literature
available for download from www.metalcraftinsulatedpanels.co.nz

Thermopanel EPS

Rev. 1.3

Reference TPEPS

Date 14.04.2025

Scale 1 : 2

Sheet

PROCESS FLOOR 02
CONTROLLED ENVIRONMENT

07 / 23

METALCRAFT
THERMOPANEL EPS

ALUMINIUM CHANNEL

F.F.L.

ø6.5mm / 32mm SHUREDRIVES
@ 300mm CRS.

ø5mm RIVETS @ 300mm CRS.

SEALANT

GUIDANCE NOTES:

1. WHEN SPECIFIC FIRE DESIGN IS REQUIRED FOR INSTALLATION OF PANELS STEEL FLASHINGS MUST BE USED.
2. FIRE RESISTANT SEALANT MUST BE USED WHEN SPECIFIC FIRE DESIGN IS REQUIRED.

DISCLAIMER:
All details are to be used for indicative purposes only and the designer should consult both the MRM code of practice and E2 and all other relevant building codes. Details of the supporting mechanisms are indicative only. These installation details must be read in conjunction with all other product literature available for download from www.metalcraftinsulatedpanels.co.nz

ø5mm RIVET TO CEILING

40mm x 40mm 2-3mm
ALUMINIUM ANGLE

METALCRAFT
THERMOPANEL EPS

ø6.5mm / 32mm SHUREDRIVES
@ 300mm CRS.

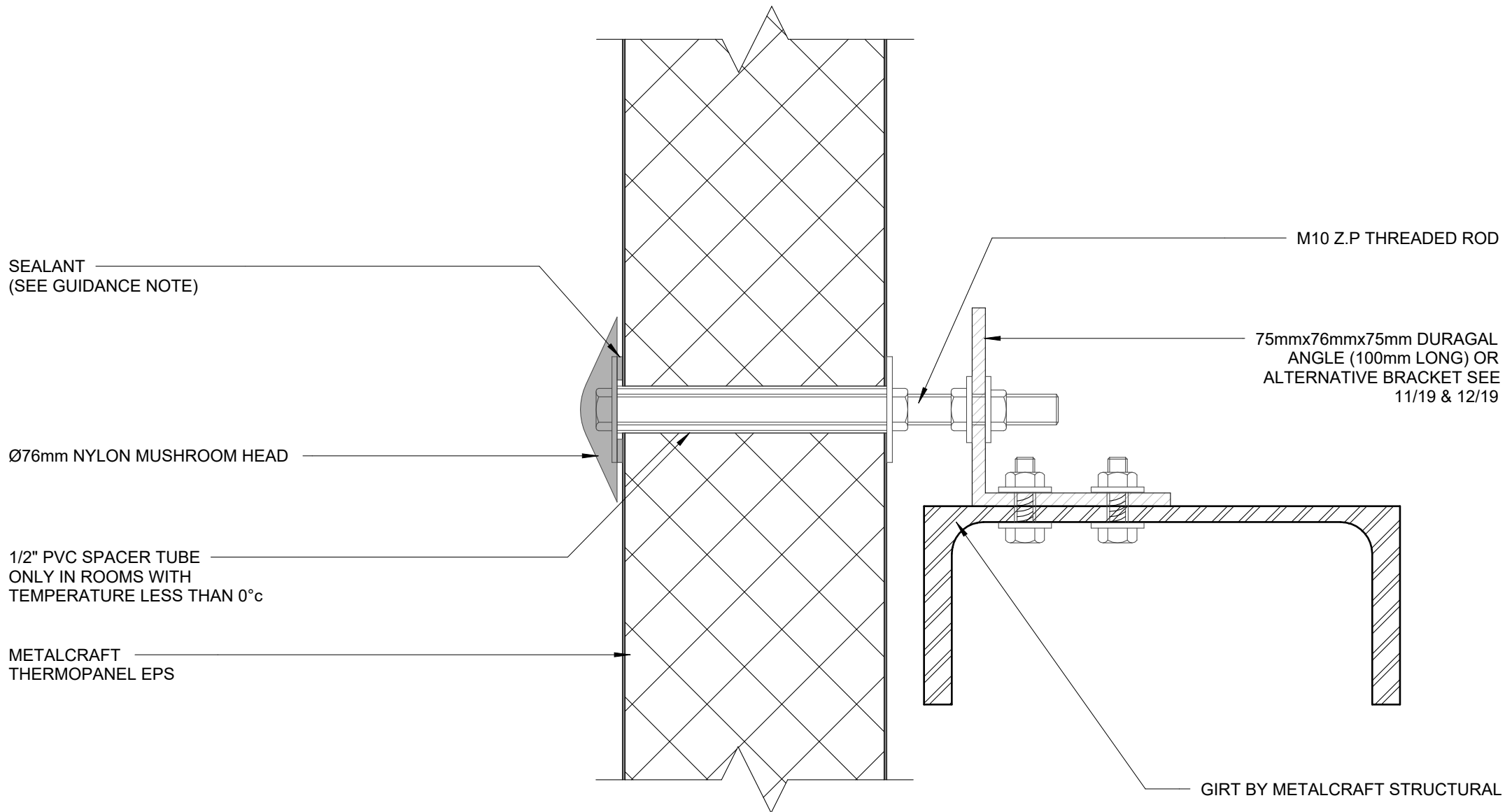
ø5mm RIVETS @300mm CRS.

ALUMINIUM CHANNEL

GUIDANCE NOTES:

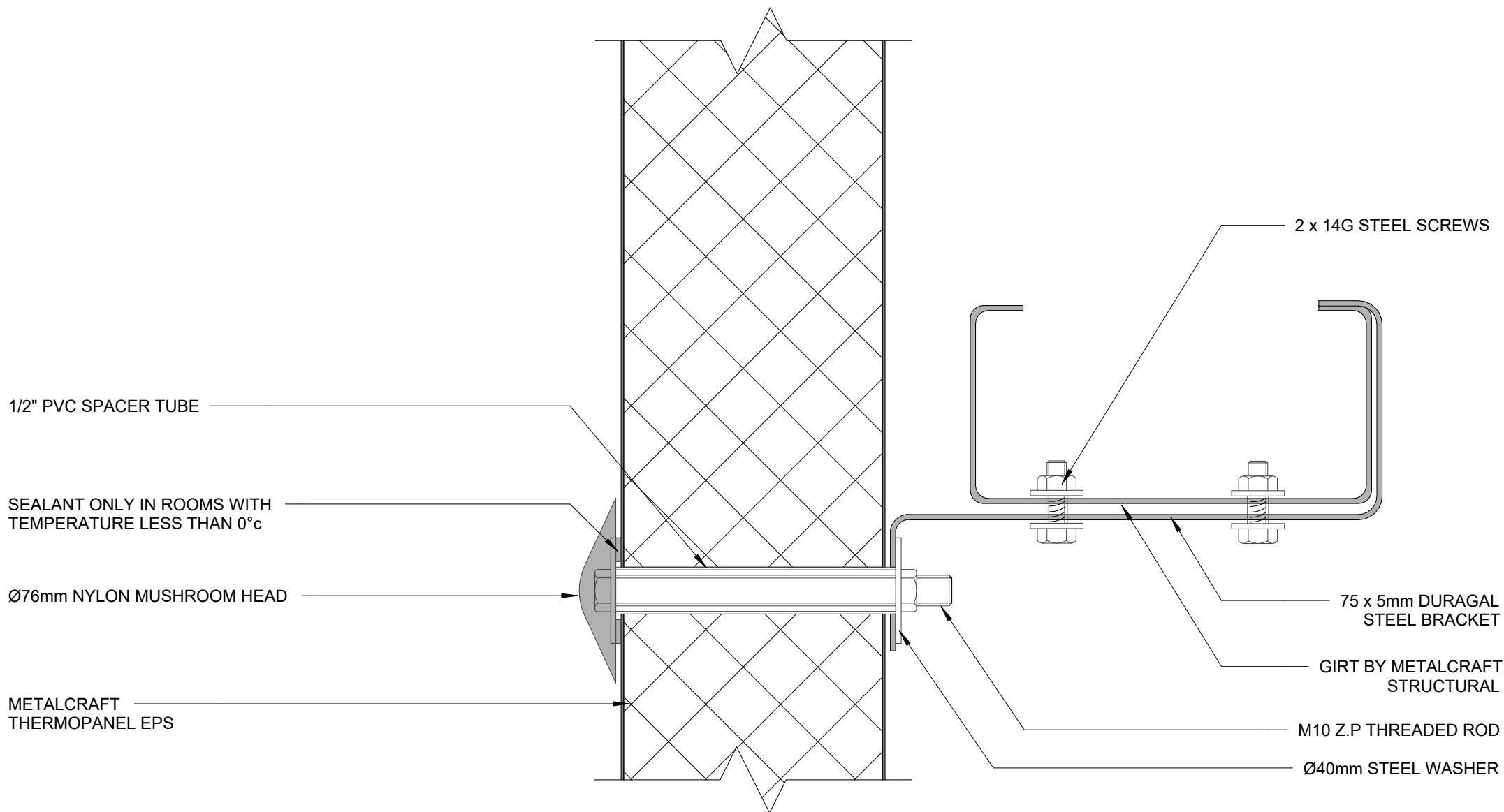
1. WHEN SPECIFIC FIRE DESIGN IS REQUIRED FOR
INSTALLATION OF PANELS STEEL FLASHINGS MUST BE USED.

2. FIRE RESISTANT SEALANT MUST BE USED WHEN SPECIFIC
FIRE DESIGN IS REQUIRED.



GUIDANCE NOTES:

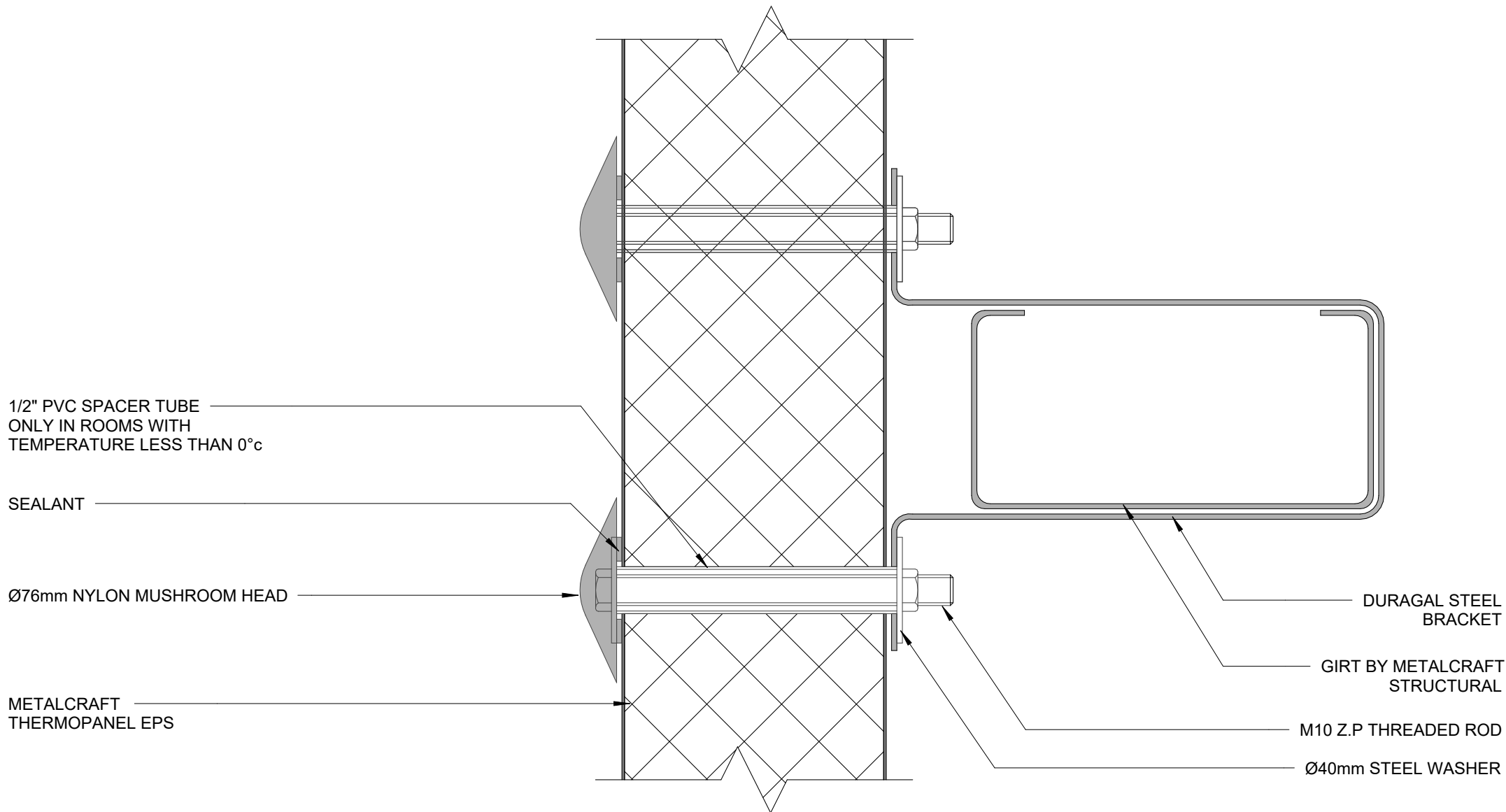
1. WHEN SPECIFIC FIRE DESIGN IS REQUIRED FOR INSTALLATION OF PANELS STEEL FLASHINGS MUST BE USED.
2. FIRE RESISTANT SEALANT MUST BE USED WHEN SPECIFIC FIRE DESIGN IS REQUIRED.



GUIDANCE NOTES:

1. WHEN SPECIFIC FIRE DESIGN IS REQUIRED FOR INSTALLATION OF PANELS STEEL FLASHINGS MUST BE USED.

2. FIRE RESISTANT SEALANT MUST BE USED WHEN SPECIFIC FIRE DESIGN IS REQUIRED.



GUIDANCE NOTES:

1. WHEN SPECIFIC FIRE DESIGN IS REQUIRED FOR
INSTALLATION OF PANELS STEEL FLASHINGS MUST BE USED.

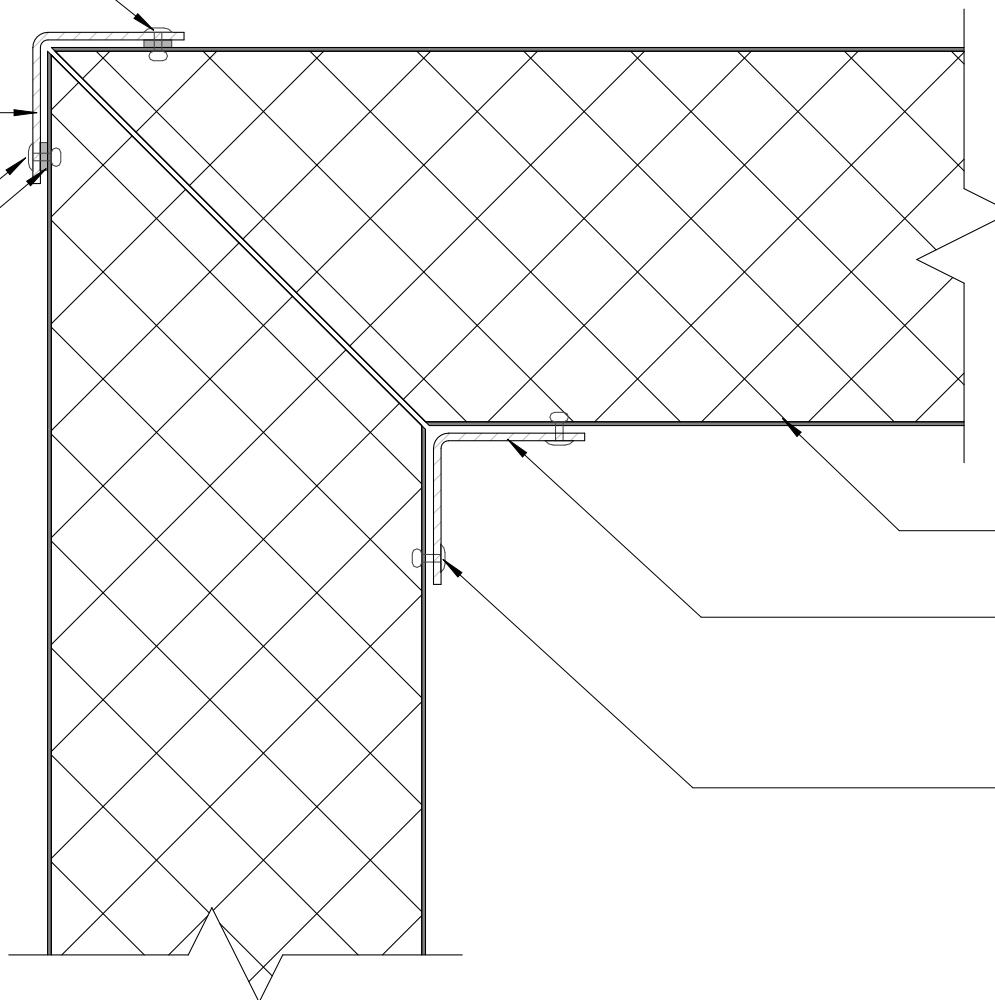
2. FIRE RESISTANT SEALANT MUST BE USED WHEN SPECIFIC
FIRE DESIGN IS REQUIRED.

Ø5mm RIVETS @ 300mm CRS

40mm x 40mm 2-3mm
ALUMINIUM ANGLE
(SEE GUIDANCE NOTE)

Ø5mm RIVETS @ 300mm CRS.
WITH SEALANT
(SEE GUIDANCE NOTE)

SEALANT
(SEE GUIDANCE NOTE)



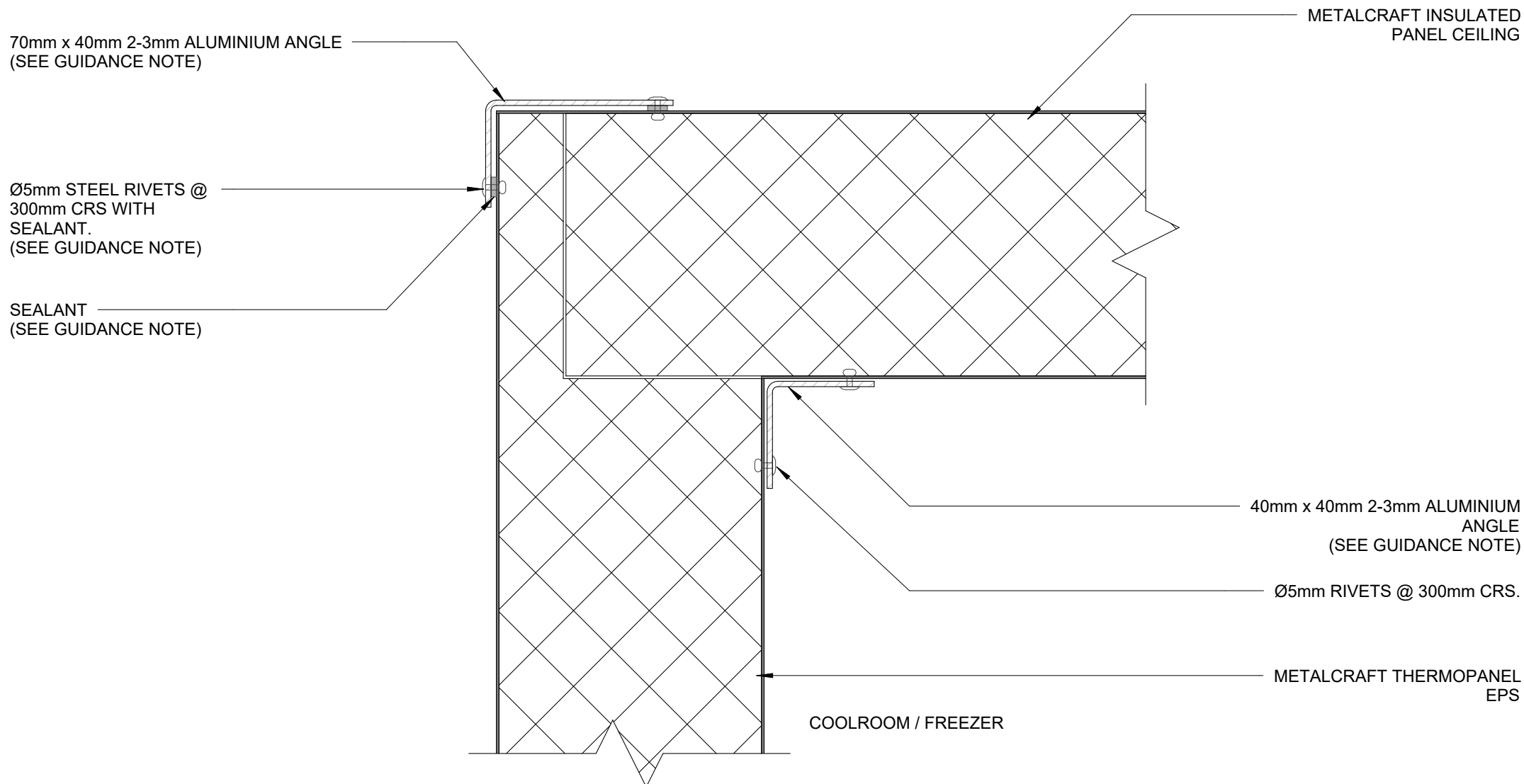
METALCRAFT THERMOPANEL
EPS

40mm x 40mm 2-3mm
ALUMINIUM ANGLE
ANGLENO SEALANT

Ø5mm RIVETS @ 300mm CRS.

GUIDANCE NOTES:

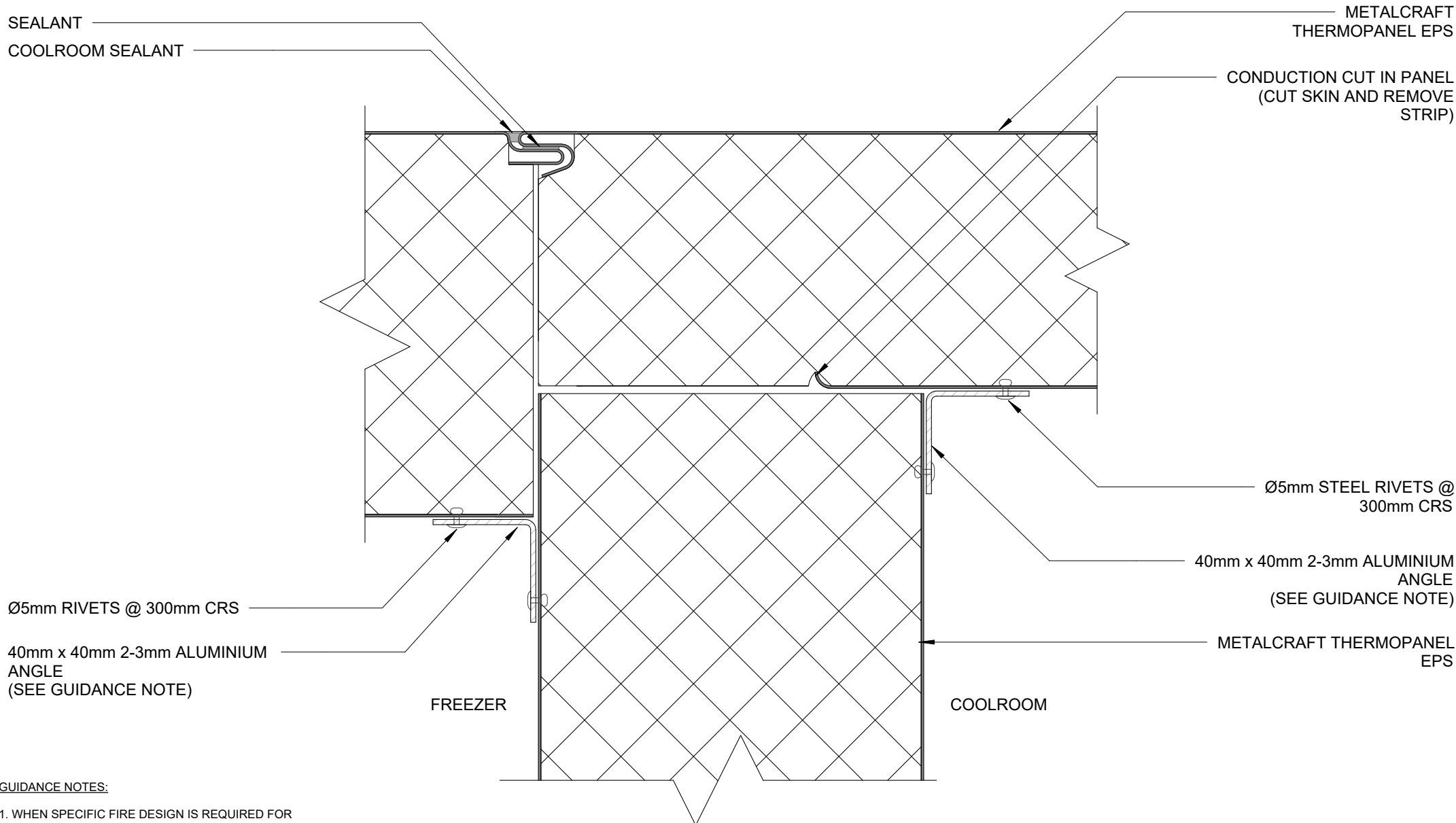
1. WHEN SPECIFIC FIRE DESIGN IS REQUIRED FOR INSTALLATION OF PANELS STEEL FLASHINGS MUST BE USED.
2. FIRE RESISTANT SEALANT MUST BE USED WHEN SPECIFIC FIRE DESIGN IS REQUIRED.



GUIDANCE NOTES:

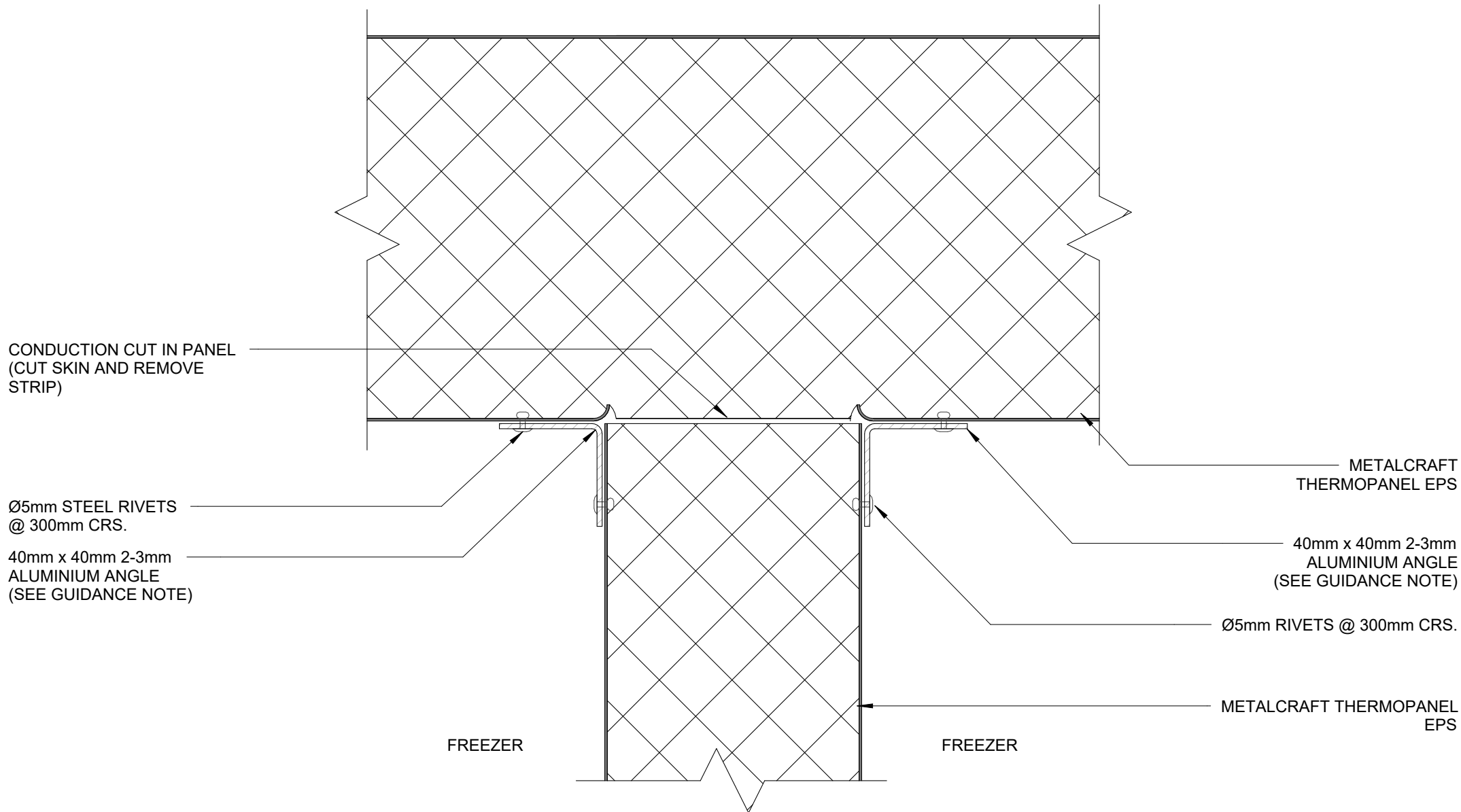
1. WHEN SPECIFIC FIRE DESIGN IS REQUIRED FOR INSTALLATION OF PANELS STEEL FLASHINGS MUST BE USED.

2. FIRE RESISTANT SEALANT MUST BE USED WHEN SPECIFIC FIRE DESIGN IS REQUIRED.



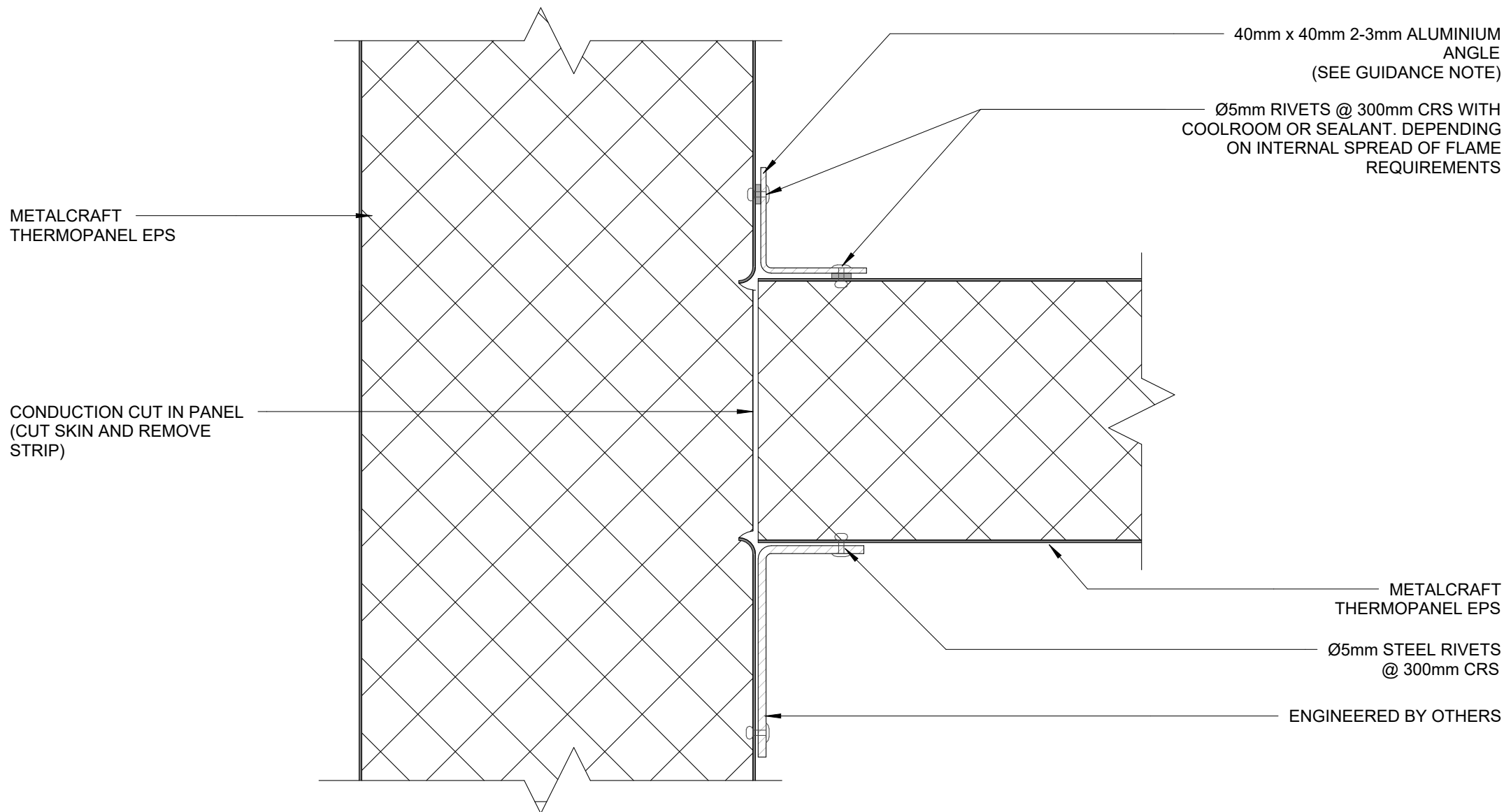
GUIDANCE NOTES:

1. WHEN SPECIFIC FIRE DESIGN IS REQUIRED FOR INSTALLATION OF PANELS STEEL FLASHINGS MUST BE USED.
2. FIRE RESISTANT SEALANT MUST BE USED WHEN SPECIFIC FIRE DESIGN IS REQUIRED.



GUIDANCE NOTES:

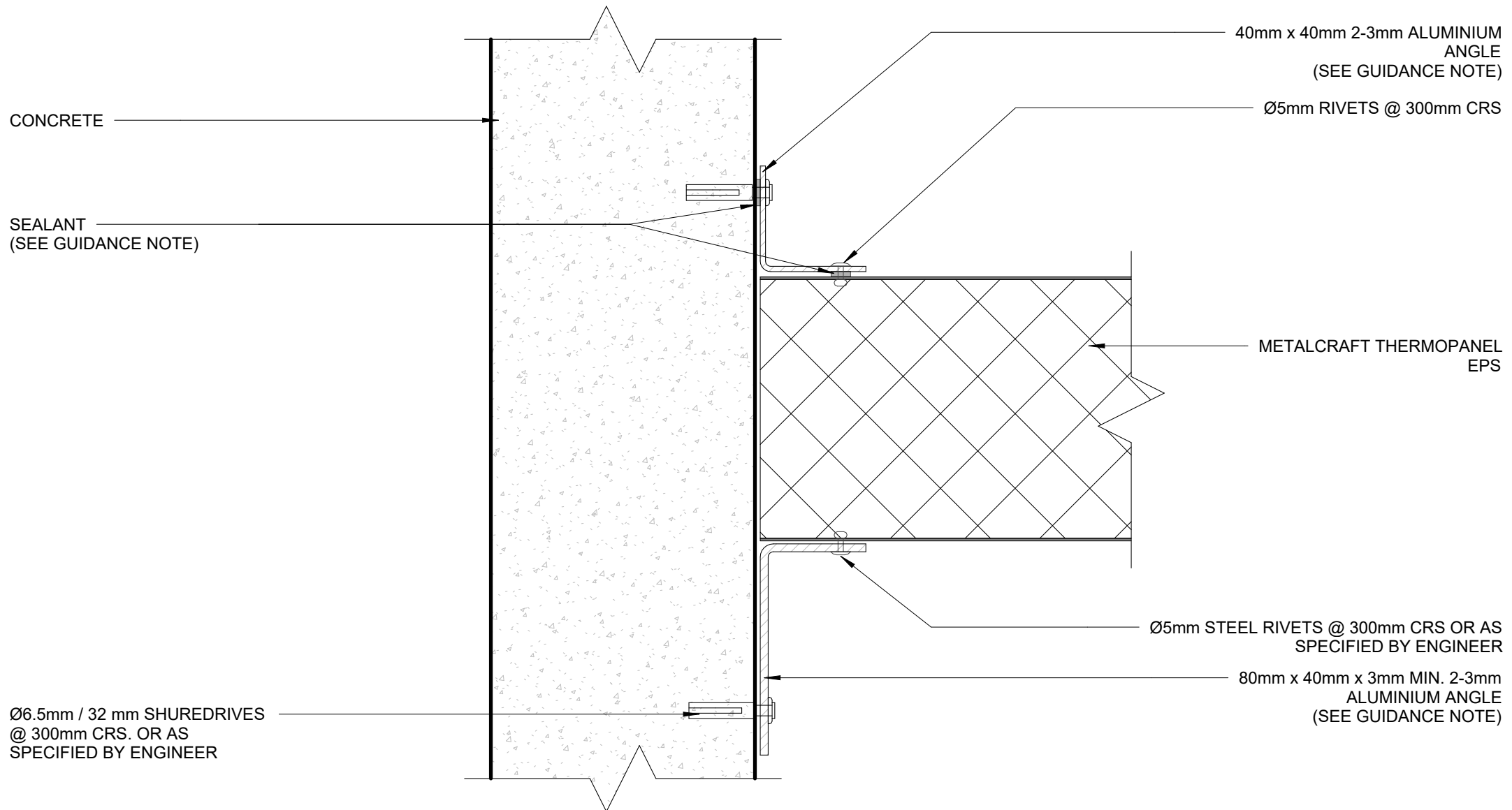
1. WHEN SPECIFIC FIRE DESIGN IS REQUIRED FOR INSTALLATION OF PANELS STEEL FLASHINGS MUST BE USED.
2. FIRE RESISTANT SEALANT MUST BE USED WHEN SPECIFIC FIRE DESIGN IS REQUIRED.



GUIDANCE NOTES:

1. WHEN SPECIFIC FIRE DESIGN IS REQUIRED FOR INSTALLATION OF PANELS STEEL FLASHINGS MUST BE USED.

2. FIRE RESISTANT SEALANT MUST BE USED WHEN SPECIFIC FIRE DESIGN IS REQUIRED.

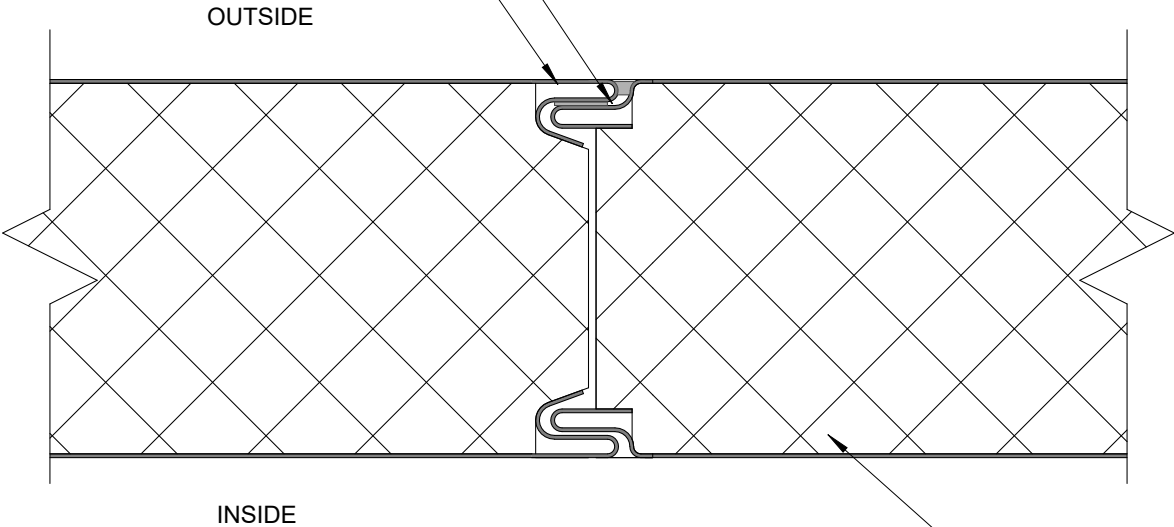


GUIDANCE NOTES:

1. WHEN SPECIFIC FIRE DESIGN IS REQUIRED FOR INSTALLATION OF PANELS STEEL FLASHINGS MUST BE USED.
2. FIRE RESISTANT SEALANT MUST BE USED WHEN SPECIFIC FIRE DESIGN IS REQUIRED.

SEALANT

COOLROOM SEALANT



METALCRAFT
THERMOPANEL

GUIDANCE NOTES:

- 1. WHEN SPECIFIC FIRE DESIGN IS REQUIRED FOR INSTALLATION OF PANELS STEEL FLASHINGS MUST BE USED.
- 2. FIRE RESISTANT SEALANT MUST BE USED WHEN SPECIFIC FIRE DESIGN IS REQUIRED.

Metalcraft
Insulated Panels
www.metalcraftinsulatedpanels.co.nz

DISCLAIMER:
All details are to be used for indicative purposes only and the designer should consult both the MRM code of practice and E2 and all other relevant building codes. Details of the supporting mechanisms are indicative only. These installation details must be read in conjunction with all other product literature available for download from www.metalcraftinsulatedpanels.co.nz

TYPICAL WALL JOINT FREEZER / COOLROOM 01

Thermopanel EPS

Rev. 1.3

CONTROLLED ENVIRONMENT

Reference TPEPS

Date 14.04.2025

Scale 1 : 2

Sheet 19 / 23

70mm x 40mm 2-3mm ALUMINIUM ANGLE
(SEE GUIDANCE NOTE)

METALCRAFT INSULATED
PANEL CEILING

Ø5mm STEEL RIVETS @
300mm CRS WITH
SEALANT.

SEALANT
(SEE GUIDANCE NOTE)

40mm x 40mm 2-3mm
ALUMINIUM ANGLE
(SEE GUIDANCE NOTE)

Ø5mm RIVETS @ 300mm CRS.

METALCRAFT THERMOPANEL
EPS

COOLROOM

GUIDANCE NOTES:

1. WHEN SPECIFIC FIRE DESIGN IS REQUIRED FOR
INSTALLATION OF PANELS STEEL FLASHINGS MUST BE USED.

2. FIRE RESISTANT SEALANT MUST BE USED WHEN SPECIFIC
FIRE DESIGN IS REQUIRED.

Metalcraft
Insulated Panels
www.metalcraftinsulatedpanels.co.nz

DISCLAIMER:
All details are to be used for indicative purposes only and the designer should consult both the MRM
code of practice and E2 and all other relevant building codes. Details of the supporting mechanisms are
indicative only. These installation details must be read in conjunction with all other product literature
available for download from www.metalcraftinsulatedpanels.co.nz

CLEAN ROOM ROOF TO WALL

CONTROLLED ENVIRONMENT

Thermopanel EPS

Rev. 1.3

Reference TPEPS

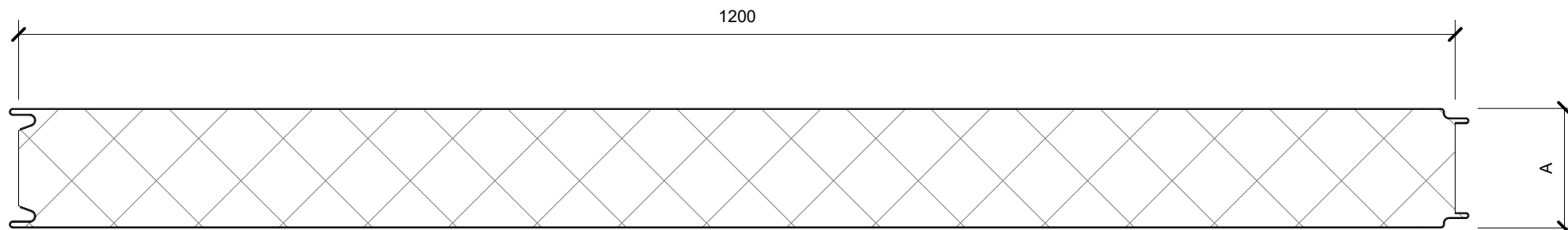
Date 14.04.2025

Scale 1 : 2

Sheet

20 / 23

THERMOPANEL EPS



FLAT FINISH - AVAILABLE BOTH SIDES

SCALE @ 1:5

A= 50, 75, 100, 125,
150, 200, 250mm

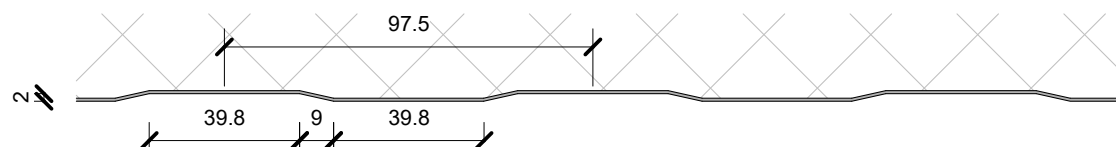
INTERNAL LINER FINISHES

SCALE @ 1:2

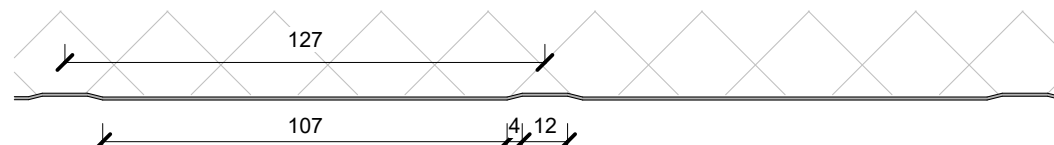
SILKLINE FINISH
- ONE SIDE ONLY

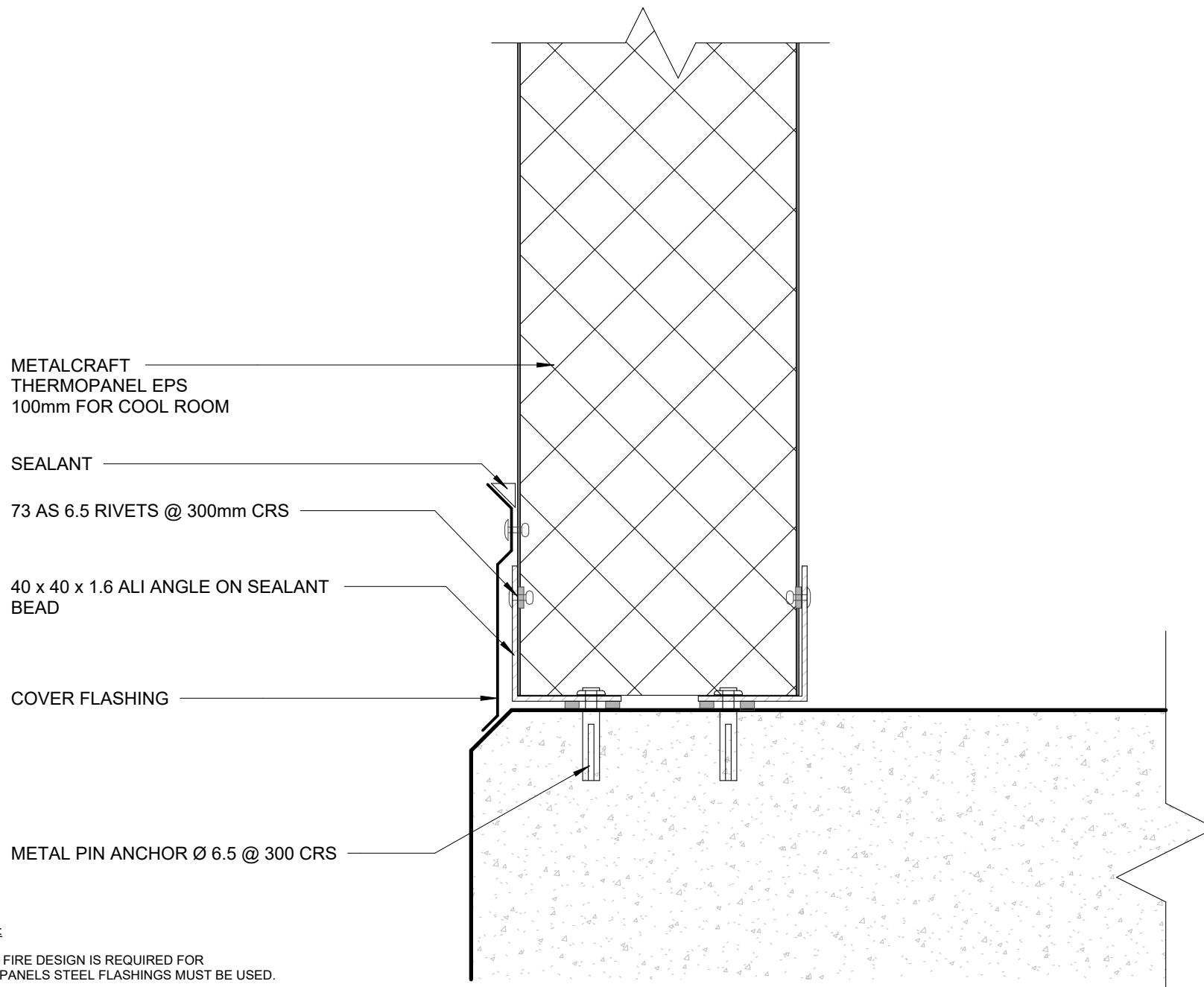


MESA FINISH
- ONE SIDE ONLY



RIBBED FINISH
- AVAILABLE BOTH SIDES





GUIDANCE NOTES:

1. WHEN SPECIFIC FIRE DESIGN IS REQUIRED FOR INSTALLATION OF PANELS STEEL FLASHINGS MUST BE USED.

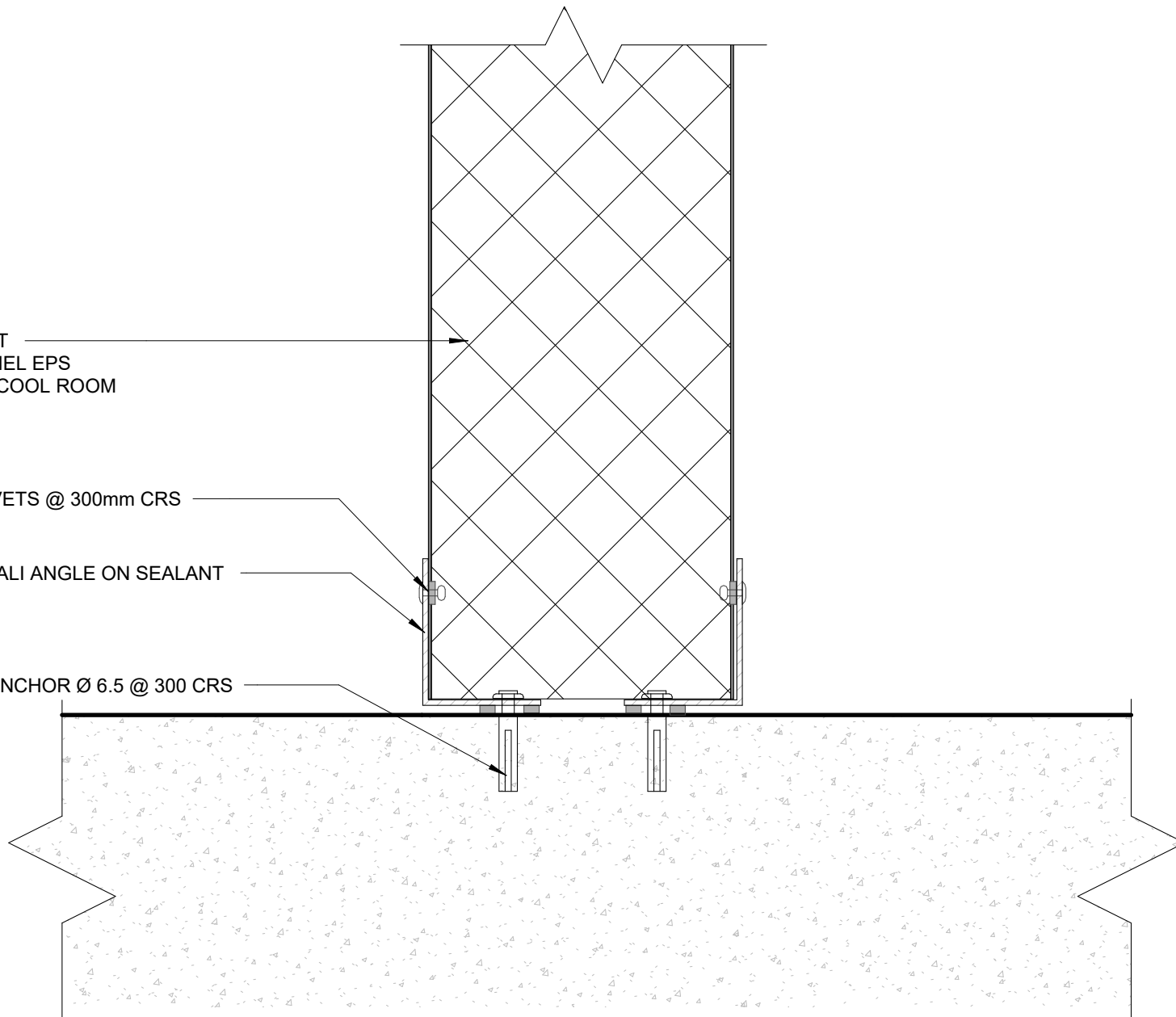
2. FIRE RESISTANT SEALANT MUST BE USED WHEN SPECIFIC FIRE DESIGN IS REQUIRED.

METALCRAFT
THERMOPANEL EPS
100mm FOR COOL ROOM

73 AS 6.5 RIVETS @ 300mm CRS

40 x 40 x 1.6 ALI ANGLE ON SEALANT
BEAD

METAL PIN ANCHOR Ø 6.5 @ 300 CRS



GUIDANCE NOTES:

1. WHEN SPECIFIC FIRE DESIGN IS REQUIRED FOR INSTALLATION OF PANELS STEEL FLASHINGS MUST BE USED.
2. FIRE RESISTANT SEALANT MUST BE USED WHEN SPECIFIC FIRE DESIGN IS REQUIRED.