

Wall Bracing System For Small Buildings

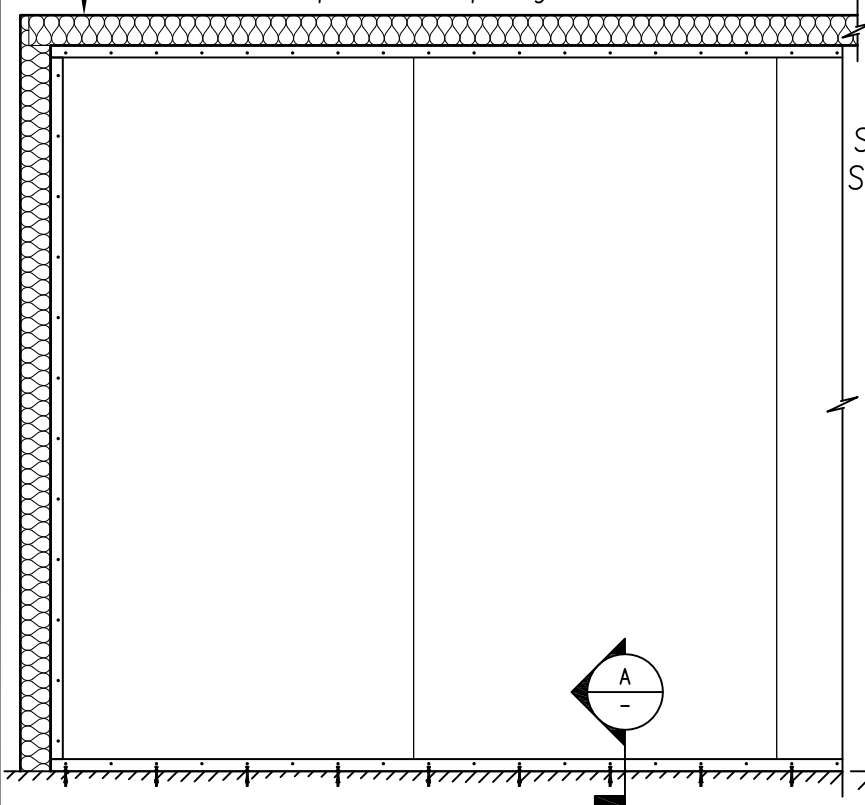
To be used generally in accordance with wall bracing procedure defined in NZS 3604 :2011

Specification Code	Minimum Length (m)	Height (m)	Wall Panel	Bracing Unit Rating (BU/m)
MC-TPI	0.9	2.4	Metalcraft Insulated Panels	70

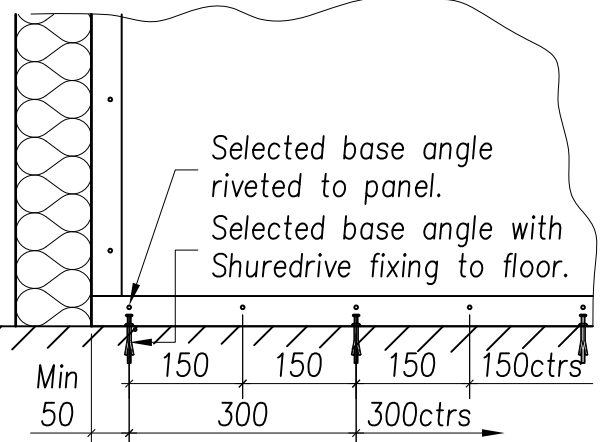
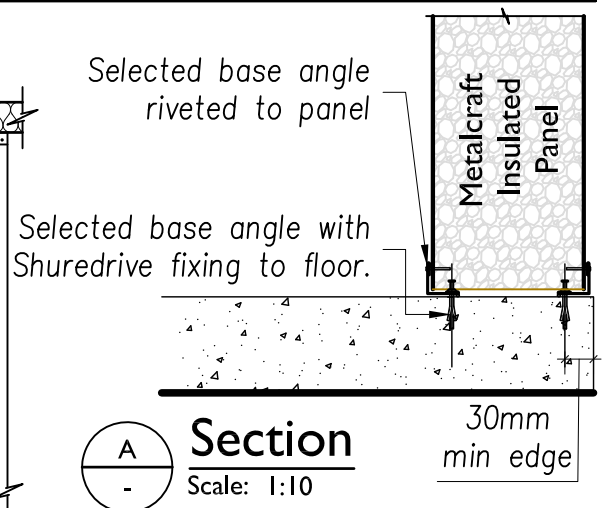
METALCRAFT INSULATED PANELS

- Panels.**
 Wall panels to be metal faced panels produced by Metalcraft such as Thermopanel, Thermopanel FR, Metecnopanel or Flamegard.
- Bottom Angles.**
 40x40x1.6 aluminium angle or 40x40x0.55mm min folded prefinished galv, steel angle.
- Fixing of Bottom Angle to Panel Lining.**
 4.8x16.5 blind rivets @ 150ctrs on bedding of neutral cure Silicon sealant.
- Fixing of Bottom Angle to Concrete Floor.**
 Shuredrive 6mm anchors @ 300ctrs max, first fixing 50mm in from each end.
- For External Panels.**
 Minimum edge distance = 30mm
- Design Principles.**
 The structural calculations based on NZS 3604 principles. All wall panels to be connected to a roof/ceiling of Metalcraft insulated panels forming a diaphragm to distribute loadings. Roof diaphragms should not have a length greater than 2x width, shall not be at a pitch greater than 25° and not longer than 15 metres.

Metalcraft insulated roof/ceiling panels over walls to provide diaphragm.



METALCRAFT INSULATED PANEL WALL ELEVATION



PO Box 43-154 Mangere Central, AUCKLAND
(09) 277-8844 Extn: 1 (09) 277-8842 peter.z@metpanels.co.nz

Wall Bracing System Specification

MC-TPI



Redco NZ Ltd
Redco House
470 Otumotu Road
Tauranga 3110
Telephone 07 576 6360
Facsimile: 07 576 0346
Email: red@redco.co.nz
www.redco.co.nz

Providing the services of
Chartered Professional Engineers

Approved _____ Drawing No. _____
Date: 22 April 2014
Issue 2

TPI